

**Phospho-MAP3K1(T1383) Antibody**  
**Affinity Purified Rabbit Polyclonal Antibody (Pab)**  
**Catalog # AP3321a**

## Specification

---

### Phospho-MAP3K1(T1383) Antibody - Product Information

Application	DB,E
Primary Accession	<a href="#">O13233</a>
Other Accession	<a href="#">O62925</a> , <a href="#">P53349</a>
Reactivity	Human
Predicted	Mouse, Rat
Host	Rabbit
Clonality	Polyclonal
Isotype	Rabbit IgG

### Phospho-MAP3K1(T1383) Antibody - Additional Information

**Gene ID** 4214

#### Other Names

Mitogen-activated protein kinase kinase kinase 1, MAPK/ERK kinase kinase 1, MEK kinase 1, MEKK1, MAP3K1, MAPKKK1, MEKK, MEKK1

#### Target/Specificity

This MAP3K1 Antibody is generated from rabbits immunized with a KLH conjugated synthetic phosphopeptide corresponding to amino acid residues surrounding T1400 of human MAP3K1.

#### Dilution

DB~~1:500

#### Format

Purified polyclonal antibody supplied in PBS with 0.09% (W/V) sodium azide. This antibody is purified through a protein A column, followed by peptide affinity purification.

#### Storage

Maintain refrigerated at 2-8°C for up to 2 weeks. For long term storage store at -20°C in small aliquots to prevent freeze-thaw cycles.

#### Precautions

Phospho-MAP3K1(T1383) Antibody is for research use only and not for use in diagnostic or therapeutic procedures.

### Phospho-MAP3K1(T1383) Antibody - Protein Information

**Name** MAP3K1

**Synonyms** MAPKKK1, MEKK, MEKK1

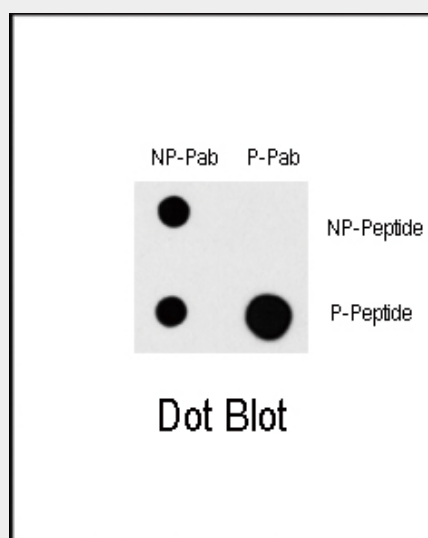
**Function** Component of a protein kinase signal transduction cascade (PubMed:[9808624](#)). Activates the ERK and JNK kinase pathways by phosphorylation of MAP2K1 and MAP2K4 (PubMed:[9808624](#)). May phosphorylate the MAPK8/JNK1 kinase (PubMed:[17761173](#)). Activates CHUK and IKBKB, the central protein kinases of the NF-kappa-B pathway (PubMed:[9808624](#)).

### Phospho-MAP3K1(T1383) Antibody - Protocols

Provided below are standard protocols that you may find useful for product applications.

- [Western Blot](#)
- [Blocking Peptides](#)
- [Dot Blot](#)
- [Immunohistochemistry](#)
- [Immunofluorescence](#)
- [Immunoprecipitation](#)
- [Flow Cytometry](#)
- [Cell Culture](#)

### Phospho-MAP3K1(T1383) Antibody - Images



Dot blot analysis of Phospho-MAP3K1-T1383 Pab (Cat.AP3321a) on nitrocellulose membrane. 50ng of Phospho-peptide or Non Phospho-peptide per dot were adsorbed. Antibody working concentration were 0.5ug per ml.

### Phospho-MAP3K1(T1383) Antibody - Background

Component of a protein kinase signal transduction cascade. Activates the ERK and JNK kinase pathways by phosphorylation of MAP2K1 and MAP2K4. Activates CHUK and IKBKB, the central protein kinases of the NF-kappa-B pathway.

### Phospho-MAP3K1(T1383) Antibody - References

Dasse,E., Leukemia 21 (4), 595-603 (2007)  
Yu,F., PLoS Pathog. 3 (3), E44 (2007)  
Wu,Y., Oncogene 25 (42), 5787-5800 (2006)

### Phospho-MAP3K1(T1383) Antibody - Citations

- [Involvement of the MEKK1 signaling pathway in the regulation of epicardial cell behavior by](#)

[hyaluronan.](#)

- [MAPK kinase kinase-1 is essential for cytokine-induced c-Jun NH2-terminal kinase and nuclear factor-kappaB activation in human pancreatic islet cells.](#)