

**Phospho-Gab1(Y659) Antibody**  
**Affinity Purified Rabbit Polyclonal Antibody (Pab)**  
**Catalog # AP3302b**

**Specification**

---

**Phospho-Gab1(Y659) Antibody - Product Information**

Application	DB,E
Primary Accession	<a href="#">O13480</a>
Other Accession	<a href="#">O9OYY0</a> , <a href="#">A6QLU3</a>
Reactivity	Human
Predicted	Bovine, Mouse
Host	Rabbit
Clonality	Polyclonal
Isotype	Rabbit IgG
Calculated MW	76616

**Phospho-Gab1(Y659) Antibody - Additional Information**

**Gene ID** 2549

**Other Names**

GRB2-associated-binding protein 1, GRB2-associated binder 1, Growth factor receptor bound protein 2-associated protein 1, GAB1

**Target/Specificity**

This Gab1 Antibody is generated from rabbits immunized with a KLH conjugated synthetic phosphopeptide corresponding to amino acid residues surrounding Y659 of human Gab1.

**Dilution**

DB~~1:500

**Format**

Purified polyclonal antibody supplied in PBS with 0.09% (W/V) sodium azide. This antibody is purified through a protein A column, followed by peptide affinity purification.

**Storage**

Maintain refrigerated at 2-8°C for up to 2 weeks. For long term storage store at -20°C in small aliquots to prevent freeze-thaw cycles.

**Precautions**

Phospho-Gab1(Y659) Antibody is for research use only and not for use in diagnostic or therapeutic procedures.

**Phospho-Gab1(Y659) Antibody - Protein Information**

**Name** GAB1

**Function** Adapter protein that plays a role in intracellular signaling cascades triggered by

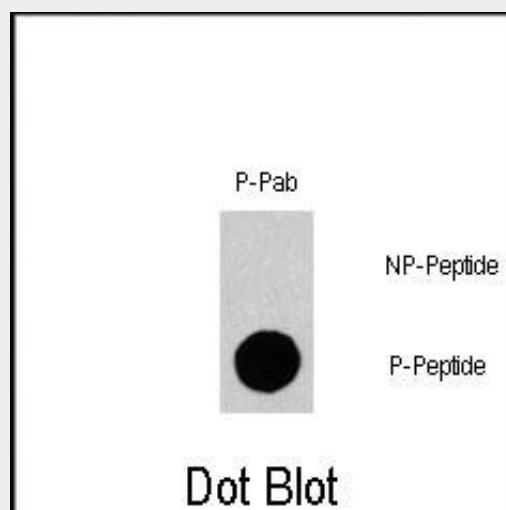
activated receptor-type kinases. Plays a role in FGFR1 signaling. Probably involved in signaling by the epidermal growth factor receptor (EGFR) and the insulin receptor (INSR). Involved in the MET/HGF-signaling pathway (PubMed:[29408807](#)).

### Phospho-Gab1(Y659) Antibody - Protocols

Provided below are standard protocols that you may find useful for product applications.

- [Western Blot](#)
- [Blocking Peptides](#)
- [Dot Blot](#)
- [Immunohistochemistry](#)
- [Immunofluorescence](#)
- [Immunoprecipitation](#)
- [Flow Cytometry](#)
- [Cell Culture](#)

### Phospho-Gab1(Y659) Antibody - Images



Dot blot analysis of Phospho-Gab1-Y659 polyclonal antibody (Cat. AP3302b) on nitrocellulose membrane. 50ng of Phospho-peptide or Non Phospho-peptide per dot were adsorbed. Antibody working concentration were 0.5ug per ml.

### Phospho-Gab1(Y659) Antibody - Background

Gab1 is a member of the IRS1-like multisubstrate docking protein family. This protein is an important mediator of branching tubulogenesis and plays a central role in cellular growth response, transformation and apoptosis.

### Phospho-Gab1(Y659) Antibody - References

- Podar, K., et al., J. Biol. Chem. 279(20):21658-21665 (2004).  
Ren, Y., et al., J. Biol. Chem. 279(9):8497-8505 (2004).  
Kapoor, G.S., et al., Mol. Cell. Biol. 24(2):823-836 (2004).  
Nakaoka, Y., et al., Circ. Res. 93(3):221-229 (2003).  
Holgado-Madruga, M., et al., Mol. Cell. Biol. 23(13):4471-4484 (2003).