

Phospho-P21CIP1(T145) Antibody
Affinity Purified Rabbit Polyclonal Antibody (Pab)
Catalog # AP3189a

Specification

Phospho-P21CIP1(T145) Antibody - Product Information

Application	WB, IHC-P, DB,E
Primary Accession	P38936
Reactivity	Human
Host	Rabbit
Clonality	Polyclonal
Isotype	Rabbit IgG

Phospho-P21CIP1(T145) Antibody - Additional Information

Gene ID 1026

Other Names

Cyclin-dependent kinase inhibitor 1, CDK-interacting protein 1, Melanoma differentiation-associated protein 6, MDA-6, p21, CDKN1A, CAP20, CDKN1, CIP1, MDA6, PIC1, SDI1, WAF1

Target/Specificity

This P21CIP1 Antibody is generated from rabbits immunized with a KLH conjugated synthetic phosphopeptide corresponding to amino acid residues surrounding T145 of human P21CIP1.

Dilution

WB~~1:1000
IHC-P~~1:50~100
DB~~1:500

Format

Purified polyclonal antibody supplied in PBS with 0.09% (W/V) sodium azide. This antibody is purified through a protein A column, followed by peptide affinity purification.

Storage

Maintain refrigerated at 2-8°C for up to 2 weeks. For long term storage store at -20°C in small aliquots to prevent freeze-thaw cycles.

Precautions

Phospho-P21CIP1(T145) Antibody is for research use only and not for use in diagnostic or therapeutic procedures.

Phospho-P21CIP1(T145) Antibody - Protein Information

Name CDKN1A ([HGNC:1784](#))

Function Plays an important role in controlling cell cycle progression and DNA damage-induced

G2 arrest (PubMed:[9106657](#)). Involved in p53/TP53 mediated inhibition of cellular proliferation in response to DNA damage. Also involved in p53-independent DNA damage-induced G2 arrest mediated by CREB3L1 in astrocytes and osteoblasts (By similarity). Binds to and inhibits cyclin-dependent kinase activity, preventing phosphorylation of critical cyclin-dependent kinase substrates and blocking cell cycle progression. Functions in the nuclear localization and assembly of cyclin D-CDK4 complex and promotes its kinase activity towards RB1. At higher stoichiometric ratios, inhibits the kinase activity of the cyclin D-CDK4 complex. Inhibits DNA synthesis by DNA polymerase delta by competing with POLD3 for PCNA binding (PubMed:[11595739](#)). Negatively regulates the CDK4- and CDK6-driven phosphorylation of RB1 in keratinocytes, thereby resulting in the release of E2F1 and subsequent transcription of E2F1-driven G1/S phase promoting genes (By similarity).

Cellular Location

Cytoplasm. Nucleus

Tissue Location

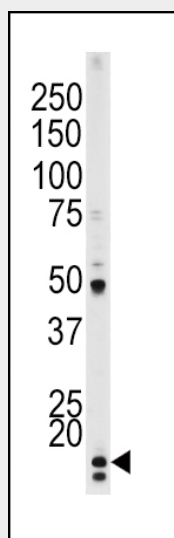
Expressed in all adult tissues, with 5-fold lower levels observed in the brain

Phospho-P21CIP1(T145) Antibody - Protocols

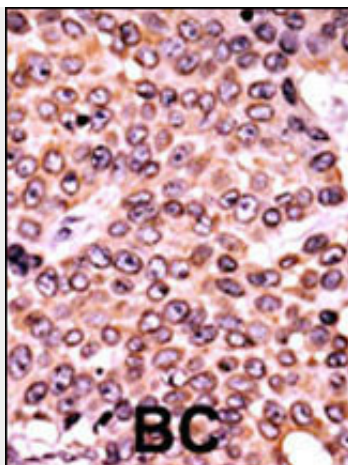
Provided below are standard protocols that you may find useful for product applications.

- [Western Blot](#)
- [Blocking Peptides](#)
- [Dot Blot](#)
- [Immunohistochemistry](#)
- [Immunofluorescence](#)
- [Immunoprecipitation](#)
- [Flow Cytometry](#)
- [Cell Culture](#)

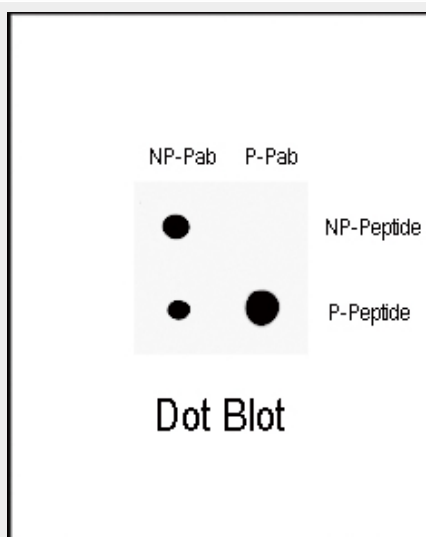
Phospho-P21CIP1(T145) Antibody - Images



The anti-Phospho-P21CIP1-T145 Pab (Cat. #AP3189a) is used in Western blot to detect Phospho-P21CIP1-T145 in Hela tissue lysate.



Formalin-fixed and paraffin-embedded human cancer tissue reacted with the primary antibody, which was peroxidase-conjugated to the secondary antibody, followed by AEC staining. This data demonstrates the use of this antibody for immunohistochemistry; clinical relevance has not been evaluated. BC = breast carcinoma; HC = hepatocarcinoma.



Dot blot analysis of anti-Phospho-P21CIP1-T145 Antibody (Cat. #AP3189a) on nitrocellulose membrane. 50ng of Phospho-peptide or Non Phospho-peptide per dot were adsorbed. Antibodies working concentration was 0.5ug per ml.

Phospho-P21CIP1(T145) Antibody - Background

P21CIP1 is a potent cyclin-dependent kinase inhibitor. This protein binds to and inhibits the activity of cyclin-CDK2 or -CDK4 complexes, and thus functions as a regulator of cell cycle progression at G1. Expression is tightly controlled by the tumor suppressor protein p53, through which this protein mediates the p53-dependent cell cycle G1 phase arrest in response to a variety of stress stimuli. P21CIP1 can interact with proliferating cell nuclear antigen (PCNA), a DNA polymerase accessory factor, and plays a regulatory role in S phase DNA replication and DNA damage repair. This protein has been reported to be specifically cleaved by CASP3-like caspases, which thus leads to a dramatic activation of CDK2, and may be instrumental in the execution of apoptosis following caspase activation.

Phospho-P21CIP1(T145) Antibody - References

Scott, S.A., et al., *Leuk. Res.* 28(12):1293-1301 (2004).
Amini, S., et al., *J. Biol. Chem.* 279(44):46046-46056 (2004).

Chen, T., et al., Cancer Res. 64(20):7412-7419 (2004).
Sieburg, M., et al., J. Virol. 78(19):10399-10409 (2004).
Giraud, S., et al., Oncogene 23(44):7391-7398 (2004).

Phospho-P21CIP1(T145) Antibody - Citations

- [Anticancer Activity of \$\gamma\$ -Bisabolene in Human Neuroblastoma Cells via Induction of p53-Mediated Mitochondrial Apoptosis.](#)
- [Specific function of phosphoinositide 3-kinase beta in the control of DNA replication.](#)