

**ATP5B Antibody (Center)**  
**Affinity Purified Rabbit Polyclonal Antibody (Pab)**  
**Catalog # AP2973c**

**Specification**

---

**ATP5B Antibody (Center) - Product Information**

Application	IF, WB, IHC-P, FC,E
Primary Accession	<a href="#">P06576</a>
Other Accession	<a href="#">P10719</a> , <a href="#">P56480</a> , <a href="#">P00829</a>
Reactivity	Human
Predicted	Bovine, Mouse, Rat
Host	Rabbit
Clonality	Polyclonal
Isotype	Rabbit IgG
Calculated MW	56560
Antigen Region	135-163

**ATP5B Antibody (Center) - Additional Information**

**Gene ID** 506

**Other Names**

ATP synthase subunit beta, mitochondrial, ATP5B, ATPMB, ATPSB

**Target/Specificity**

This ATP5B antibody is generated from rabbits immunized with a KLH conjugated synthetic peptide between 135-163 amino acids from the Central region of human ATP5B.

**Dilution**

IF~~1:25  
WB~~1:1000  
IHC-P~~1:25  
FC~~1:10~50

**Format**

Purified polyclonal antibody supplied in PBS with 0.09% (W/V) sodium azide. This antibody is purified through a protein A column, followed by peptide affinity purification.

**Storage**

Maintain refrigerated at 2-8°C for up to 2 weeks. For long term storage store at -20°C in small aliquots to prevent freeze-thaw cycles.

**Precautions**

ATP5B Antibody (Center) is for research use only and not for use in diagnostic or therapeutic procedures.

**ATP5B Antibody (Center) - Protein Information**

**Name** ATP5F1B ([HGNC:830](#))

**Function** Mitochondrial membrane ATP synthase (F<sub>1</sub>F<sub>0</sub>) ATP synthase or Complex V) produces ATP from ADP in the presence of a proton gradient across the membrane which is generated by electron transport complexes of the respiratory chain. F-type ATPases consist of two structural domains, F(1) - containing the extramembraneous catalytic core, and F(0) - containing the membrane proton channel, linked together by a central stalk and a peripheral stalk. During catalysis, ATP synthesis in the catalytic domain of F(1) is coupled via a rotary mechanism of the central stalk subunits to proton translocation. Subunits alpha and beta form the catalytic core in F(1). Rotation of the central stalk against the surrounding alpha(3)beta(3) subunits leads to hydrolysis of ATP in three separate catalytic sites on the beta subunits.

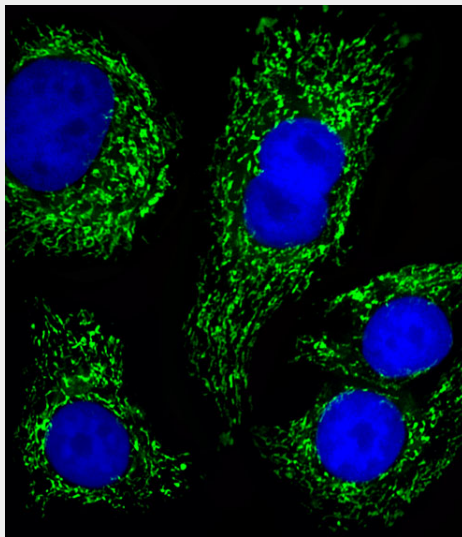
**Cellular Location**

Mitochondrion inner membrane; Peripheral membrane protein {ECO:0000250|UniProtKB:P00829}; Matrix side {ECO:0000250|UniProtKB:P00829, ECO:0000269|PubMed:25168243}

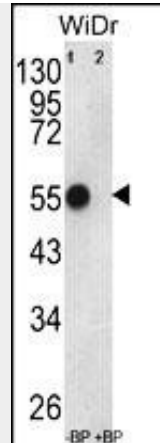
**ATP5B Antibody (Center) - Protocols**

Provided below are standard protocols that you may find useful for product applications.

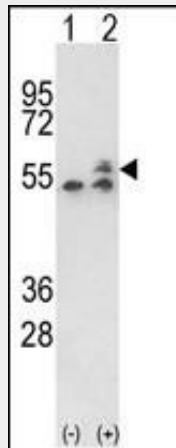
- [Western Blot](#)
- [Blocking Peptides](#)
- [Dot Blot](#)
- [Immunohistochemistry](#)
- [Immunofluorescence](#)
- [Immunoprecipitation](#)
- [Flow Cytometry](#)
- [Cell Culture](#)

**ATP5B Antibody (Center) - Images**

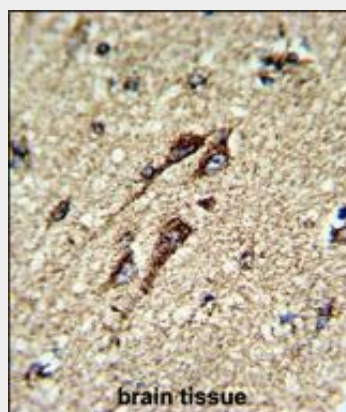
Fluorescent image of SK-BR-3 cells stained with ATP5B Antibody (Center)(Cat#AP2973c). AP2973c was diluted at 1:25 dilution. An Alexa Fluor 488-conjugated goat anti-rabbit IgG at 1:400 dilution was used as the secondary antibody (green). DAPI was used to stain the cell nuclear (blue) .



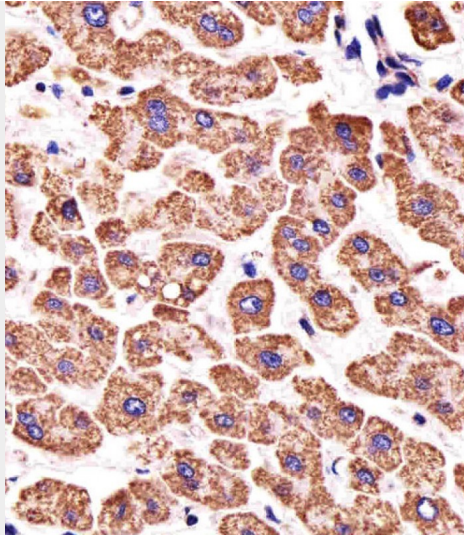
Western blot analysis of ATP5B Antibody (Center) Pab (Cat. #AP2973c) pre-incubated without(lane 1) and with(lane 2) blocking peptide in WiDr cell line lysate. ATP5B (arrow) was detected using the purified Pab.



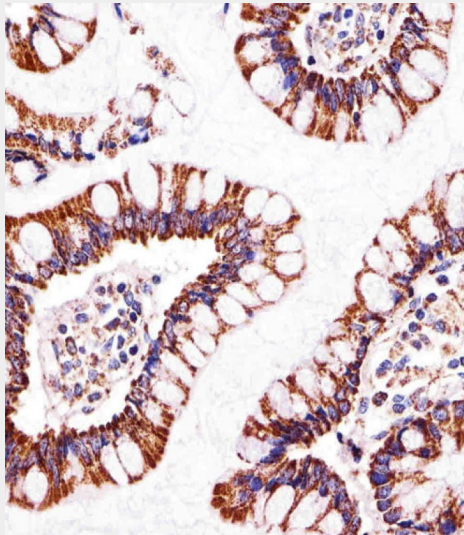
Western blot analysis of ATP5B (arrow) using rabbit polyclonal ATP5B Antibody (Center) (Cat. #AP2973c). 293 cell lysates (2 ug/lane) either nontransfected (Lane 1) or transiently transfected with the ATP5B gene (Lane 2) .



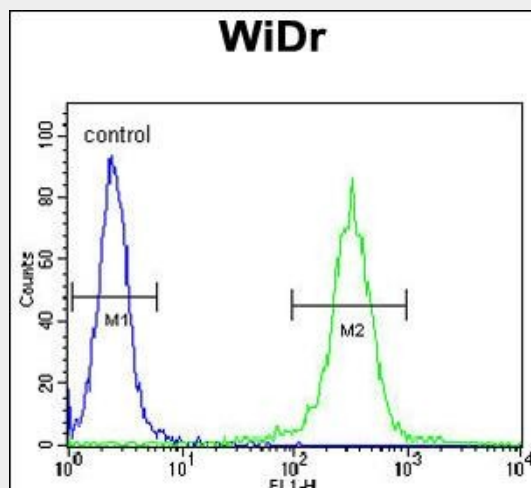
Formalin-fixed and paraffin-embedded human brain tissue reacted with ATP5B Antibody (Center), which was peroxidase-conjugated to the secondary antibody, followed by DAB staining. This data demonstrates the use of this antibody for immunohistochemistry; clinical relevance has not been evaluated.



Immunohistochemical analysis of paraffin-embedded H. liver section using ATP5B Antibody (Center)(Cat#AP2973c). AP2973c was diluted at 1:25 dilution. A undiluted biotinylated goat polyvalent antibody was used as the secondary, followed by DAB staining.



Immunohistochemical analysis of paraffin-embedded H. small intestine section using ATP5B Antibody (Center)(Cat#AP2973c). AP2973c was diluted at 1:25 dilution. A undiluted biotinylated goat polyvalent antibody was used as the secondary, followed by DAB staining.



ATP5B Antibody (Center) (Cat. #AP2973c) flow cytometric analysis of WiDr cells (right histogram) compared to a negative control cell (left histogram). FITC-conjugated goat-anti-rabbit secondary antibodies were used for the analysis.

### **ATP5B Antibody (Center) - Background**

ATP5B is a subunit of mitochondrial ATP synthase. Mitochondrial ATP synthase catalyzes ATP synthesis, utilizing an electrochemical gradient of protons across the inner membrane during oxidative phosphorylation. ATP synthase is composed of two linked multi-subunit complexes: the soluble catalytic core, F<sub>1</sub>, and the membrane-spanning component, F<sub>o</sub>, comprising the proton channel. The catalytic portion of mitochondrial ATP synthase consists of 5 different subunits (alpha, beta, gamma, delta, and epsilon) assembled with a stoichiometry of 3 alpha, 3 beta, and a single representative of the other 3. The proton channel consists of three main subunits (a, b, c). It is the beta subunit of the catalytic core.

### **ATP5B Antibody (Center) - References**

Neckelmann, N., et al., Genomics 5 (4), 829-843 (1989) Ohta, S., et al., J. Biol. Chem. 263 (23), 11257-11262 (1988) Wallace, D.C., et al., Curr. Genet. 12 (2), 81-90 (1987)