

PABPC1 Antibody (Center)
Purified Rabbit Polyclonal Antibody (Pab)
Catalog # AP2920c

Specification

PABPC1 Antibody (Center) - Product Information

Application	WB, IHC-P,E
Primary Accession	P11940
Other Accession	Q6IP09 , P20965 , Q9EPH8 , P29341 , P61286
Reactivity	Human, Mouse
Predicted	Bovine, Rat, Xenopus
Host	Rabbit
Clonality	Polyclonal
Isotype	Rabbit IgG
Calculated MW	70671
Antigen Region	250-279

PABPC1 Antibody (Center) - Additional Information

Gene ID 26986

Other Names

Polyadenylate-binding protein 1, PABP-1, Poly(A)-binding protein 1, PABPC1, PAB1, PABP1, PABPC2

Target/Specificity

This PABPC1 antibody is generated from rabbits immunized with a KLH conjugated synthetic peptide between 250-279 amino acids from the Central region of human PABPC1.

Dilution

WB~~1:1000
IHC-P~~1:50~100

Format

Purified polyclonal antibody supplied in PBS with 0.09% (W/V) sodium azide. This antibody is prepared by Saturated Ammonium Sulfate (SAS) precipitation followed by dialysis against PBS.

Storage

Maintain refrigerated at 2-8°C for up to 2 weeks. For long term storage store at -20°C in small aliquots to prevent freeze-thaw cycles.

Precautions

PABPC1 Antibody (Center) is for research use only and not for use in diagnostic or therapeutic procedures.

PABPC1 Antibody (Center) - Protein Information

Name PABPC1 ([HGNC:8554](#))

Function Binds the poly(A) tail of mRNA, including that of its own transcript, and regulates processes of mRNA metabolism such as pre-mRNA splicing and mRNA stability (PubMed:[11051545](#), PubMed:[17212783](#), PubMed:[25480299](#)). Its function in translational initiation regulation can either be enhanced by PAIP1 or repressed by PAIP2 (PubMed:[11051545](#), PubMed:[20573744](#)). Can probably bind to cytoplasmic RNA sequences other than poly(A) in vivo. Binds to N6-methyladenosine (m6A)-containing mRNAs and contributes to MYC stability by binding to m6A-containing MYC mRNAs (PubMed:[32245947](#)). Involved in translationally coupled mRNA turnover (PubMed:[11051545](#)). Implicated with other RNA-binding proteins in the cytoplasmic deadenylation/translational and decay interplay of the FOS mRNA mediated by the major coding-region determinant of instability (mCRD) domain (PubMed:[11051545](#)). Involved in regulation of nonsense-mediated decay (NMD) of mRNAs containing premature stop codons; for the recognition of premature termination codons (PTC) and initiation of NMD a competitive interaction between UPF1 and PABPC1 with the ribosome-bound release factors is proposed (PubMed:[18447585](#)). By binding to long poly(A) tails, may protect them from uridylation by ZCCHC6/ZCCHC11 and hence contribute to mRNA stability (PubMed:[25480299](#)).

Cellular Location

Cytoplasm. Cytoplasm, Stress granule. Nucleus. Cell projection, lamellipodium. Note=Localized in cytoplasmic mRNP granules containing untranslated mRNAs (PubMed:[17289661](#)). Shuttles between the cytoplasm and the nucleus (PubMed:[9582337](#)). During stress and in the absence of DDX3X, localizes to the nucleus (PubMed:[21883093](#)). At the leading edge of migrating fibroblasts, colocalizes with DDX3X (PubMed:[28733330](#)). Relocalizes to cytoplasmic stress granules upon cellular stress where it colocalizes with ENDOV (PubMed:[27573237](#)). In case of HRSV infection, localizes in cytoplasmic inclusion bodies substructures called inclusion bodies associated granules (IBAGs) (PubMed:[31649314](#))

Tissue Location

Ubiquitous.

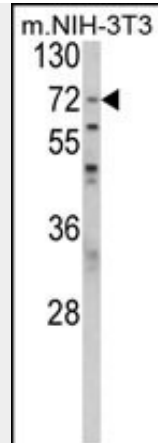
PABPC1 Antibody (Center) - Protocols

Provided below are standard protocols that you may find useful for product applications.

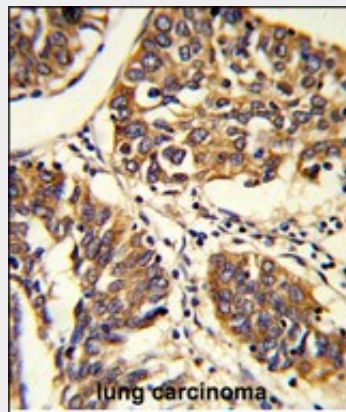
- [Western Blot](#)
- [Blocking Peptides](#)
- [Dot Blot](#)
- [Immunohistochemistry](#)
- [Immunofluorescence](#)
- [Immunoprecipitation](#)
- [Flow Cytometry](#)
- [Cell Culture](#)

PABPC1 Antibody (Center) - Images





Western blot analysis of PABPC1 Antibody (Center) (Cat. #AP2920c) in NIH-3T3 cell line lysates (35ug/lane). PABPC1 (arrow) was detected using the purified Pab.



Formalin-fixed and paraffin-embedded human lung carcinoma reacted with PABPC1 Antibody (Center), which was peroxidase-conjugated to the secondary antibody, followed by DAB staining. This data demonstrates the use of this antibody for immunohistochemistry; clinical relevance has not been evaluated.

PABPC1 Antibody (Center) - Background

PABPC1 binds the poly(A) tail of mRNA. It may be involved in cytoplasmic regulatory processes of mRNA metabolism such as pre-mRNA splicing. Its function in translational initiation regulation can either be enhanced by PAIP1 or repressed by PAIP2. PABPC1 can probably bind to cytoplasmic RNA sequences other than poly(A) in vivo. It may be involved in translationally coupled mRNA turnover. Implicated with other RNA-binding proteins in the cytoplasmic deadenylation/translational and decay interplay of the FOS mRNA mediated by the major coding-region determinant of instability (mCRD) domain.

PABPC1 Antibody (Center) - References

Le Clerc,S., et.al., J. Infect. Dis. 200 (8), 1194-1201 (2009)

PABPC1 Antibody (Center) - Citations

- [Exosomal circPABPC1 promotes colorectal cancer liver metastases by regulating HMGA2 in the nucleus and BMP4/ADAM19 in the cytoplasm.](#)