

**MDH2 Antibody (Center)**  
**Purified Rabbit Polyclonal Antibody (Pab)**  
**Catalog # AP2909c****Specification**

---

**MDH2 Antibody (Center) - Product Information**

Application	WB, IHC-P, FC,E
Primary Accession	<a href="#">P40926</a>
Other Accession	<a href="#">P04636</a> , <a href="#">P00346</a> , <a href="#">P08249</a> , <a href="#">Q4R568</a> , <a href="#">O02640</a> , <a href="#">Q32LG3</a> , <a href="#">P22133</a>
Reactivity	Human, Mouse
Predicted	Yeast, Bovine, C.Elegans, Monkey, Pig, Rat
Host	Rabbit
Clonality	Polyclonal
Isotype	Rabbit IgG
Antigen Region	86-115

**MDH2 Antibody (Center) - Additional Information****Gene ID** 4191**Other Names**

Malate dehydrogenase, mitochondrial, MDH2

**Target/Specificity**

This MDH2 antibody is generated from rabbits immunized with a KLH conjugated synthetic peptide between 86-115 amino acids from the Central region of human MDH2.

**Dilution**WB~~1:1000  
IHC-P~~1:10~50  
FC~~1:10~50**Format**

Purified polyclonal antibody supplied in PBS with 0.09% (W/V) sodium azide. This antibody is prepared by Saturated Ammonium Sulfate (SAS) precipitation followed by dialysis against PBS.

**Storage**

Maintain refrigerated at 2-8°C for up to 2 weeks. For long term storage store at -20°C in small aliquots to prevent freeze-thaw cycles.

**Precautions**

MDH2 Antibody (Center) is for research use only and not for use in diagnostic or therapeutic procedures.

**MDH2 Antibody (Center) - Protein Information****Name** MDH2

## Cellular Location

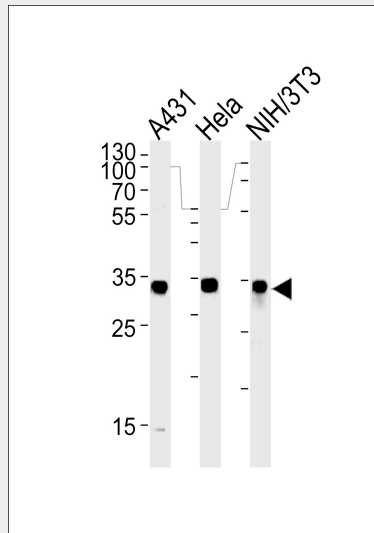
Mitochondrion matrix {ECO:0000250|UniProtKB:P04636}

## MDH2 Antibody (Center) - Protocols

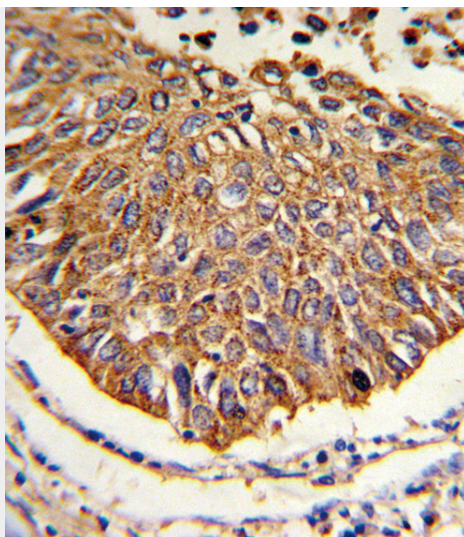
Provided below are standard protocols that you may find useful for product applications.

- [Western Blot](#)
- [Blocking Peptides](#)
- [Dot Blot](#)
- [Immunohistochemistry](#)
- [Immunofluorescence](#)
- [Immunoprecipitation](#)
- [Flow Cytometry](#)
- [Cell Culture](#)

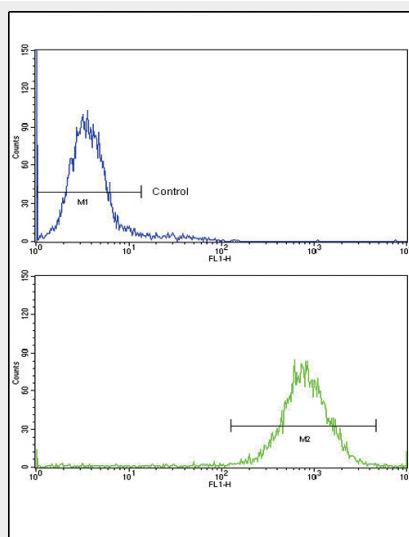
## MDH2 Antibody (Center) - Images



MDH2 Antibody (Center) (Cat. #AP2909c) western blot analysis in A431, HeLa and mouse NIH/3T3 cell line lysates (35ug/lane). This demonstrates the MDH2 antibody detected the MDH2 protein (arrow).



Formalin-fixed and paraffin-embedded human lung carcinoma reacted with MDH2 Antibody (Center), which was peroxidase-conjugated to the secondary antibody, followed by DAB staining. This data demonstrates the use of this antibody for immunohistochemistry; clinical relevance has not been evaluated.



Flow cytometric analysis of K562 cells using MDH2 Antibody (Center)(bottom histogram) compared to a negative control cell (top histogram)FITC-conjugated goat-anti-rabbit secondary antibodies were used for the analysis.

### **MDH2 Antibody (Center) - Background**

MDH2 is localized to the mitochondria and may play pivotal roles in the malate-aspartate shuttle that operates in the metabolic coordination between cytosol and mitochondria.

### **MDH2 Antibody (Center) - References**

Rzem,R.,et.al., J. Inherit. Metab. Dis. 30 (5), 681-689 (2007)

### **MDH2 Antibody (Center) - Citations**

- [SEIPIN Isoforms Interact with the Membrane-Tethering Protein VAP27-1 for Lipid Droplet Formation](#)
- [Spatial control of lipid droplet proteins by the ERAD ubiquitin ligase Doa10.](#)

