

MDH1 Antibody (C-term)
Purified Rabbit Polyclonal Antibody (Pab)
Catalog # AP2908b

Specification

MDH1 Antibody (C-term) - Product Information

Application	WB, IHC-P, FC,E
Primary Accession	P40925
Other Accession	O88989 , P11708 , P14152 , O5ZME2 , O3T145
Reactivity	Human
Predicted	Bovine, Chicken, Mouse, Pig, Rat
Host	Rabbit
Clonality	Polyclonal
Isotype	Rabbit IgG
Calculated MW	36426
Antigen Region	286-314

MDH1 Antibody (C-term) - Additional Information

Gene ID 4190

Other Names

Malate dehydrogenase, cytoplasmic, Cytosolic malate dehydrogenase, Diiodophenylpyruvate reductase, MDH1, MDHA

Target/Specificity

This MDH1 antibody is generated from rabbits immunized with a KLH conjugated synthetic peptide between 286-314 amino acids from the C-terminal region of human MDH1.

Dilution

WB~~1:1000
IHC-P~~1:10~50
FC~~1:10~50

Format

Purified polyclonal antibody supplied in PBS with 0.09% (W/V) sodium azide. This antibody is prepared by Saturated Ammonium Sulfate (SAS) precipitation followed by dialysis against PBS.

Storage

Maintain refrigerated at 2-8°C for up to 2 weeks. For long term storage store at -20°C in small aliquots to prevent freeze-thaw cycles.

Precautions

MDH1 Antibody (C-term) is for research use only and not for use in diagnostic or therapeutic procedures.

MDH1 Antibody (C-term) - Protein Information

Name MDH1 {ECO:0000303|PubMed:34012073, ECO:0000312|HGNC:HGNC:6970}

Function Catalyzes the reduction of aromatic alpha-keto acids in the presence of NADH (PubMed:[2449162](#), PubMed:[3052244](#)). Plays essential roles in the malate-aspartate shuttle and the tricarboxylic acid cycle, important in mitochondrial NADH supply for oxidative phosphorylation (PubMed:[31538237](#)). Catalyzes the reduction of 2-oxoglutarate to 2- hydroxyglutarate, leading to elevated reactive oxygen species (ROS) (PubMed:[34012073](#)).

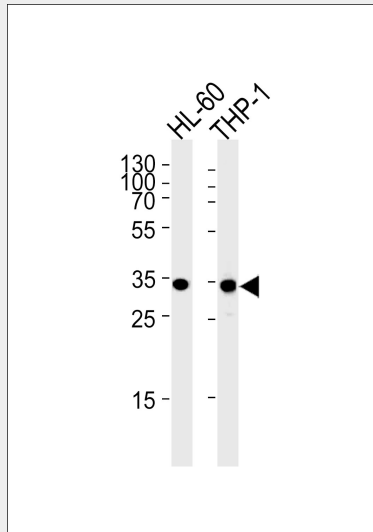
Cellular Location
Cytoplasm, cytosol.

MDH1 Antibody (C-term) - Protocols

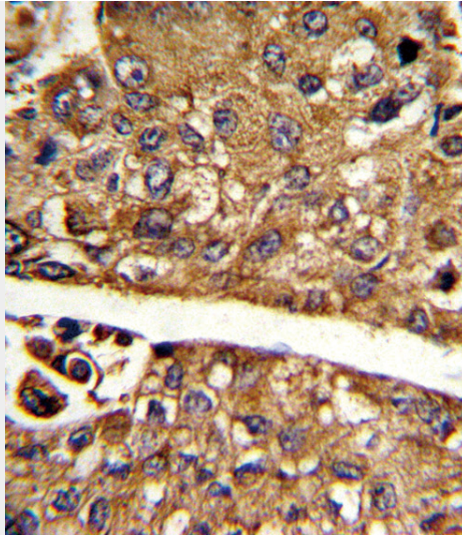
Provided below are standard protocols that you may find useful for product applications.

- [Western Blot](#)
- [Blocking Peptides](#)
- [Dot Blot](#)
- [Immunohistochemistry](#)
- [Immunofluorescence](#)
- [Immunoprecipitation](#)
- [Flow Cytometry](#)
- [Cell Culture](#)

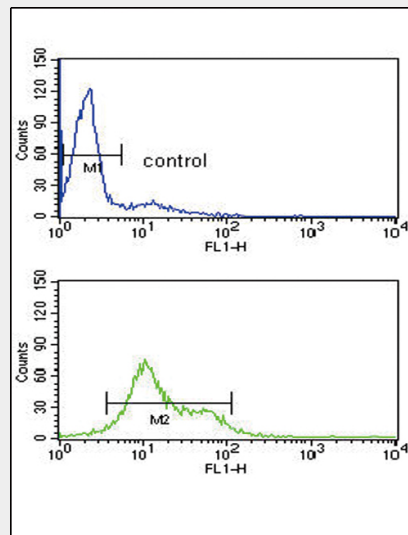
MDH1 Antibody (C-term) - Images



MDH1 Antibody (C-term) (Cat. #AP2908b) western blot analysis in HL-60,THP-1 cell line lysates (35ug/lane).This demonstrates the MDH1 antibody detected the MDH1 protein (arrow).



Formalin-fixed and paraffin-embedded human hepatocarcinoma reacted with MDH1 Antibody (C-term), which was peroxidase-conjugated to the secondary antibody, followed by DAB staining. This data demonstrates the use of this antibody for immunohistochemistry; clinical relevance has not been evaluated.



MDH1 Antibody (C-term) (Cat. #AP2908b) flow cytometry analysis of HL-60 cells (bottom histogram) compared to a negative control cell (top histogram). FITC-conjugated goat-anti-rabbit secondary antibodies were used for the analysis.

MDH1 Antibody (C-term) - Background

MDH1 is localized to the cytoplasm and may play pivotal roles in the malate-aspartate shuttle that operates in the metabolic coordination between cytosol and mitochondria.

MDH1 Antibody (C-term) - References

Lee, S.M., et al., Cell Death Differ. 16 (5), 738-748 (2009)