

CFL1 Antibody (Center)
Affinity Purified Rabbit Polyclonal Antibody (Pab)
Catalog # AP2905c

Specification

CFL1 Antibody (Center) - Product Information

Application	WB, FC,E
Primary Accession	P23528
Other Accession	Q5XHH8 , Q5G6V9 , P45591 , Q9Y281 , P21566 , Q148F1 , P45592 , P10668 , P18760 , Q4R5C0 , Q5E9F7 , Q6B7M7
Reactivity Predicted	Human, Mouse Bovine, Monkey, Pig, Rat, Sheep, Chicken, Xenopus
Host	Rabbit
Clonality	Polyclonal
Isotype	Rabbit IgG
Calculated MW	18502
Antigen Region	70-98

CFL1 Antibody (Center) - Additional Information

Gene ID 1072

Other Names

Cofilin-1, 18 kDa phosphoprotein, p18, Cofilin, non-muscle isoform, CFL1, CFL

Target/Specificity

This CFL1 antibody is generated from rabbits immunized with a KLH conjugated synthetic peptide between 70-98 amino acids from the Central region of human CFL1.

Dilution

WB~~1:1000
FC~~1:10~50

Format

Purified polyclonal antibody supplied in PBS with 0.09% (W/V) sodium azide. This antibody is purified through a protein A column, followed by peptide affinity purification.

Storage

Maintain refrigerated at 2-8°C for up to 2 weeks. For long term storage store at -20°C in small aliquots to prevent freeze-thaw cycles.

Precautions

CFL1 Antibody (Center) is for research use only and not for use in diagnostic or therapeutic procedures.

CFL1 Antibody (Center) - Protein Information

Name CFL1

Synonyms CFL

Function Binds to F-actin and exhibits pH-sensitive F-actin depolymerizing activity (PubMed:[11812157](#)). In conjunction with the subcortical maternal complex (SCMC), plays an essential role for zygotes to progress beyond the first embryonic cell divisions via regulation of actin dynamics (PubMed:[15580268](#)). Required for the centralization of the mitotic spindle and symmetric division of zygotes (By similarity). Plays a role in the regulation of cell morphology and cytoskeletal organization in epithelial cells (PubMed:[21834987](#)). Required for the up-regulation of atypical chemokine receptor ACKR2 from endosomal compartment to cell membrane, increasing its efficiency in chemokine uptake and degradation (PubMed:[23633677](#)). Required for neural tube morphogenesis and neural crest cell migration (By similarity).

Cellular Location

Nucleus matrix. Cytoplasm, cytoskeleton. Cell projection, ruffle membrane; Peripheral membrane protein; Cytoplasmic side. Cell projection, lamellipodium membrane; Peripheral membrane protein; Cytoplasmic side. Cell projection, lamellipodium {ECO:0000250|UniProtKB:P18760}. Cell projection, growth cone {ECO:0000250|UniProtKB:P18760}. Cell projection, axon {ECO:0000250|UniProtKB:P18760}. Note=Colocalizes with the actin cytoskeleton in membrane ruffles and lamellipodia. Detected at the cleavage furrow and contractile ring during cytokinesis. Almost completely in nucleus in cells exposed to heat shock or 10% dimethyl sulfoxide

Tissue Location

Widely distributed in various tissues.

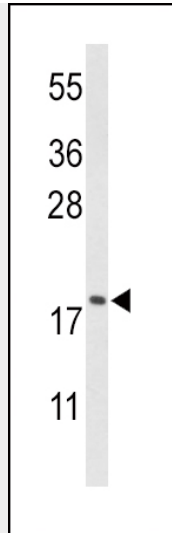
CFL1 Antibody (Center) - Protocols

Provided below are standard protocols that you may find useful for product applications.

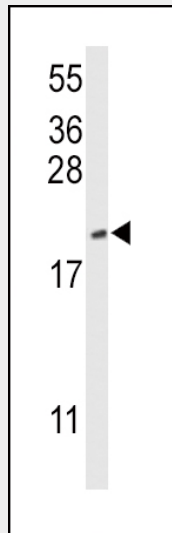
- [Western Blot](#)
- [Blocking Peptides](#)
- [Dot Blot](#)
- [Immunohistochemistry](#)
- [Immunofluorescence](#)
- [Immunoprecipitation](#)
- [Flow Cytometry](#)
- [Cell Culture](#)

CFL1 Antibody (Center) - Images

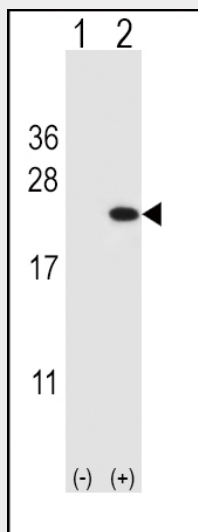




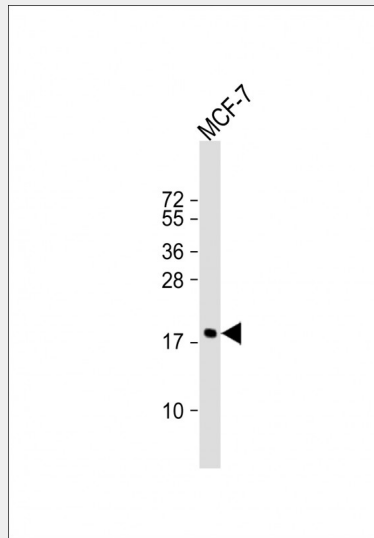
Western blot analysis of CFL1 Antibody (Center) (Cat. #AP2905c) in HL-60 cell line lysates (35ug/lane). CFL1 (arrow) was detected using the purified Pab;



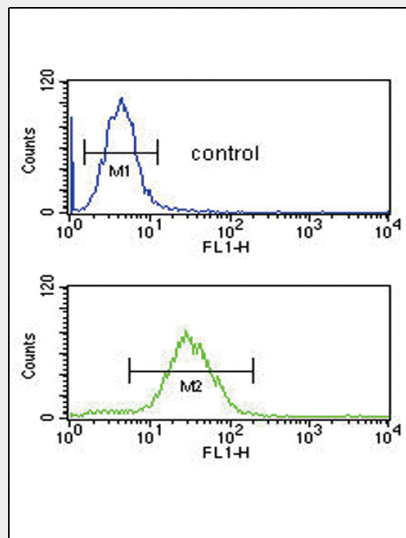
Western blot analysis of CFL1 Antibody (Center) (Cat. #AP2905c) in mouse NIH-3T3 cell line lysates (35ug/lane). CFL1 (arrow) was detected using the purified Pab.



Western blot analysis of CFL1 (arrow) using rabbit polyclonal CFL1 Antibody (Center) (Cat. #AP2905c). 293 cell lysates (2 ug/lane) either nontransfected (Lane 1) or transiently transfected (Lane 2) with the CFL1 gene.



Anti-CFL1 Antibody (Center) at 1:1000 dilution + MCF-7 whole cell lysate Lysates/proteins at 20 µg per lane. Secondary Goat Anti-Rabbit IgG, (H+L), Peroxidase conjugated at 1/10000 dilution. Predicted band size : 19 kDa Blocking/Dilution buffer: 5% NFDN/TBST.



CFL1 Antibody (Center) (Cat. #AP2905c) flow cytometric analysis of HL-60 cells (bottom histogram) compared to a negative control cell (top histogram). FITC-conjugated goat-anti-rabbit secondary antibodies were used for the analysis.

CFL1 Antibody (Center) - Background

Cofilin is a widely distributed intracellular actin-modulating protein that binds and depolymerizes filamentous F-actin and inhibits the polymerization of monomeric G-actin in a pH-dependent manner.

CFL1 Antibody (Center) - References

Fazal, F., et al., J. Biol. Chem. 284 (31), 21047-21056 (2009)