

ENOB Antibody (Center)
Purified Rabbit Polyclonal Antibody (Pab)
Catalog # AP2885c

Specification

ENOB Antibody (Center) - Product Information

Application	WB, IHC-P, FC,E
Primary Accession	P13929
Other Accession	P15429 , Q1KYT0 , P21550 , Q3ZC09
Reactivity	Human, Mouse, Rat
Predicted	Bovine, Pig
Host	Rabbit
Clonality	Polyclonal
Isotype	Rabbit IgG
Antigen Region	237-264

ENOB Antibody (Center) - Additional Information

Gene ID 2027

Other Names

Beta-enolase, 2-phospho-D-glycerate hydro-lyase, Enolase 3, Muscle-specific enolase, MSE, Skeletal muscle enolase, ENO3

Target/Specificity

This ENOB antibody is generated from rabbits immunized with a KLH conjugated synthetic peptide between 237-264 amino acids from the Central region of human ENOB.

Dilution

WB~~1:1000
IHC-P~~1:50~100
FC~~1:10~50

Format

Purified polyclonal antibody supplied in PBS with 0.09% (W/V) sodium azide. This antibody is prepared by Saturated Ammonium Sulfate (SAS) precipitation followed by dialysis against PBS.

Storage

Maintain refrigerated at 2-8°C for up to 2 weeks. For long term storage store at -20°C in small aliquots to prevent freeze-thaw cycles.

Precautions

ENOB Antibody (Center) is for research use only and not for use in diagnostic or therapeutic procedures.

ENOB Antibody (Center) - Protein Information

Name ENO3

Function Glycolytic enzyme that catalyzes the conversion of 2- phosphoglycerate to phosphoenolpyruvate. Appears to have a function in striated muscle development and regeneration.

Cellular Location

Cytoplasm. Note=Localized to the Z line. Some colocalization with CKM at M-band (By similarity).

Tissue Location

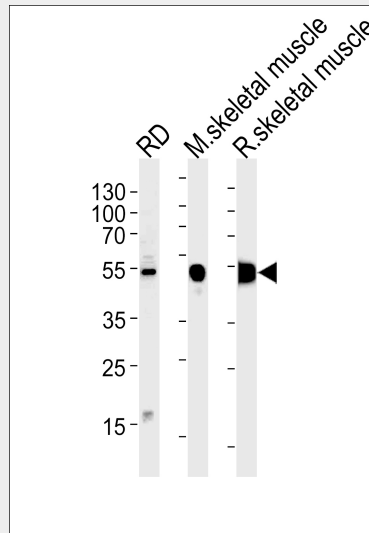
The alpha/alpha homodimer is expressed in embryo and in most adult tissues. The alpha/beta heterodimer and the beta/beta homodimer are found in striated muscle, and the alpha/gamma heterodimer and the gamma/gamma homodimer in neurons

ENOB Antibody (Center) - Protocols

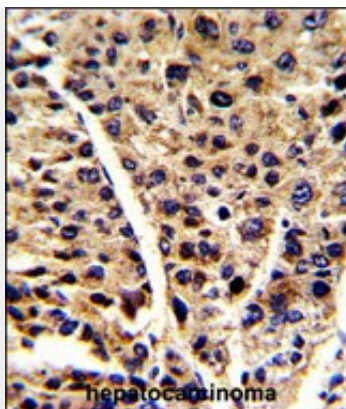
Provided below are standard protocols that you may find useful for product applications.

- [Western Blot](#)
- [Blocking Peptides](#)
- [Dot Blot](#)
- [Immunohistochemistry](#)
- [Immunofluorescence](#)
- [Immunoprecipitation](#)
- [Flow Cytometry](#)
- [Cell Culture](#)

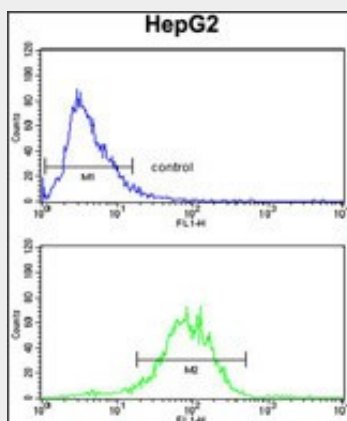
ENOB Antibody (Center) - Images



ENOB Antibody (Center) (Cat.# AP2885c) western blot analysis in RD cell line and mouse skeletal muscle, rat skeletal muscle lysates (35ug/lane). This demonstrates the ENOB antibody detected the ENOB protein (arrow).



Formalin-fixed and paraffin-embedded human hepatocarcinoma reacted with ENOB Antibody (Center), which was peroxidase-conjugated to the secondary antibody, followed by DAB staining. This data demonstrates the use of this antibody for immunohistochemistry; clinical relevance has not been evaluated.



ENOB Antibody (Center) (Cat.#AP2885c) flow cytometry analysis of HepG2 cells (bottom histogram) compared to a negative control cell (top histogram). FITC-conjugated goat-anti-rabbit secondary antibodies were used for the analysis.

ENOB Antibody (Center) - Background

ENOB is one of the three enolase isoenzymes found in mammals. This isoenzyme, a homodimer, is found in skeletal muscle cells in the adult. A switch from alpha enolase to beta enolase occurs in muscle tissue during development in rodents. Mutations in its gene can be associated with metabolic myopathies that may result from decreased stability of the enzyme.

ENOB Antibody (Center) - References

- Aurino,S., Acta Myol 27, 90-97 (2008)
Giallongo,A., Eur. J. Biochem. 214 (2), 367-374 (1993)