

**CD38 Antibody (C-term)**  
**Purified Rabbit Polyclonal Antibody (Pab)**  
**Catalog # AP2878b****Specification**

---

**CD38 Antibody (C-term) - Product Information**

Application	IF, WB, IHC-P, FC,E
Primary Accession	<a href="#">P28907</a>
Other Accession	<a href="#">Q5VAN0</a>
Reactivity	Human
Predicted	Monkey
Host	Rabbit
Clonality	Polyclonal
Isotype	Rabbit IgG
Antigen Region	241-270

**CD38 Antibody (C-term) - Additional Information****Gene ID** 952**Other Names**

ADP-ribosyl cyclase/cyclic ADP-ribose hydrolase 1, 2'-phospho-ADP-ribosyl cyclase, 2'-phospho-ADP-ribosyl cyclase/2'-phospho-cyclic-ADP-ribose transferase, 2'-phospho-cyclic-ADP-ribose transferase, ADP-ribosyl cyclase 1, ADPRC 1, Cyclic ADP-ribose hydrolase 1, cADPr hydrolase 1, T10, CD38, CD38

**Target/Specificity**

This CD38 antibody is generated from rabbits immunized with a KLH conjugated synthetic peptide between 241-270 amino acids from the C-terminal region of human CD38.

**Dilution**

IF~~1:10~50  
WB~~1:4000  
IHC-P~~1:50~100  
FC~~1:10~50

**Format**

Purified polyclonal antibody supplied in PBS with 0.09% (W/V) sodium azide. This antibody is prepared by Saturated Ammonium Sulfate (SAS) precipitation followed by dialysis against PBS.

**Storage**

Maintain refrigerated at 2-8°C for up to 2 weeks. For long term storage store at -20°C in small aliquots to prevent freeze-thaw cycles.

**Precautions**

CD38 Antibody (C-term) is for research use only and not for use in diagnostic or therapeutic procedures.

**CD38 Antibody (C-term) - Protein Information**

**Name** CD38

**Function** Synthesizes cyclic ADP-ribose (cADPR), a second messenger for glucose-induced insulin secretion (PubMed:[7961800](#), PubMed:[8253715](#)). Synthesizes the Ca(2+) mobilizer nicotinate-adenine dinucleotide phosphate, NAADP(+), from 2'-phospho-cADPR and nicotinic acid, as well as from NADP(+) and nicotinic acid. At both pH 5.0 and pH 7.4 preferentially transforms 2'-phospho-cADPR into NAADP(+), while preferentially cleaving NADP(+) to cADPR and ADPRP rather than into NADDP(+) (PubMed:[16690024](#)). Has cADPR hydrolase activity (PubMed:[7961800](#), PubMed:[8253715](#)).

**Cellular Location**

Cell surface. Membrane; Single-pass type II membrane protein

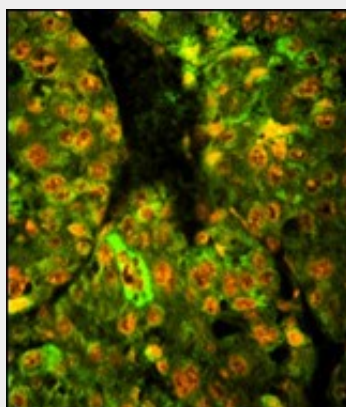
**Tissue Location**

Expressed at high levels in pancreas, liver, kidney, brain, testis, ovary, placenta, malignant lymphoma and neuroblastoma.

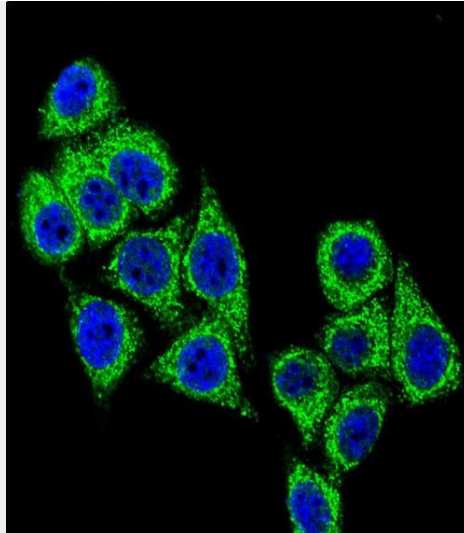
**CD38 Antibody (C-term) - Protocols**

Provided below are standard protocols that you may find useful for product applications.

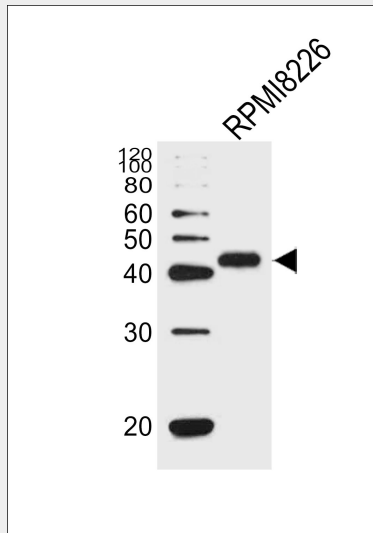
- [Western Blot](#)
- [Blocking Peptides](#)
- [Dot Blot](#)
- [Immunohistochemistry](#)
- [Immunofluorescence](#)
- [Immunoprecipitation](#)
- [Flow Cytometry](#)
- [Cell Culture](#)

**CD38 Antibody (C-term) - Images**

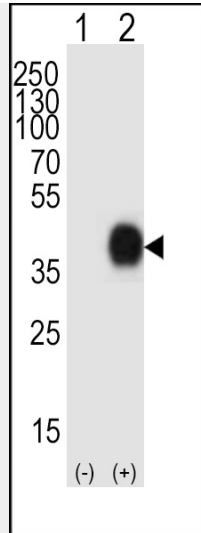
Immunofluorescence analysis of CD38 Antibody (C-term) with paraffin-embedded human hepatocarcinoma tissue . 0.05 mg/ml primary antibody was followed by FITC-conjugated goat anti-rabbit IgG (whole molecule). FITC emits green fluorescence.Red counterstaining is PI.



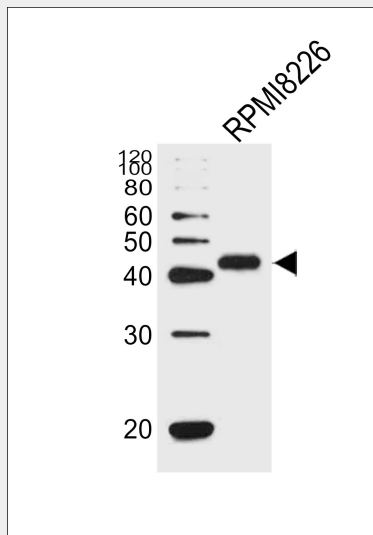
Confocal immunofluorescent analysis of CD38 Antibody (C-term) (Cat. #AP2878b) with HeLa cell followed by Alexa Fluor® 488-conjugated goat anti-rabbit IgG (green). DAPI was used to stain the cell nuclear (blue).



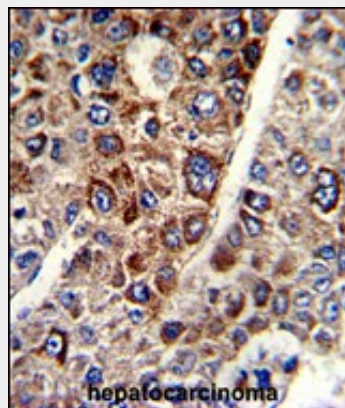
Western blot analysis of lysate from RPMI 8226 cell line, using CD38 Antibody (C-term)(Cat. #AP2878b). AP2878b was diluted at 1:1000. A goat anti-rabbit IgG H&L(HRP) at 1:5000 dilution was used as the secondary antibody. Lysate at 35ug.



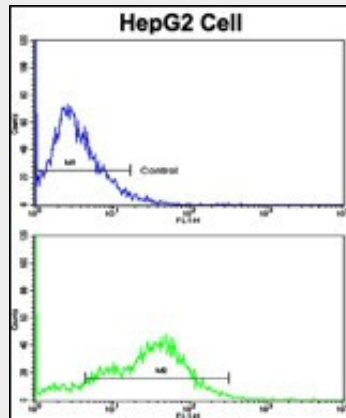
Western blot analysis of lysate from 293 cell lysates (2 ug/lane) either nontransfected (Lane 1) or transiently transfected (Lane 2) with the CD38 gene using CD38 Antibody (C-term)(Cat. #AP2878b). AP2878b was diluted at 1:1000. A goat anti-rabbit IgG H&L(HRP) at 1:10000 dilution was used as the secondary antibody. Lysate at 20ug.



Western blot analysis of lysate from RPMI8226 cell line, using CD38 Antibody (C-term)(Cat. #AP2878b). AP2878b was diluted at 1:1000. A goat anti-rabbit IgG H&L(HRP) at 1:10000 dilution was used as the secondary antibody. Lysate at 20ug.



Formalin-fixed and paraffin-embedded human hepatocarcinoma with CD38 Antibody (C-term), which was peroxidase-conjugated to the secondary antibody, followed by DAB staining. This data demonstrates the use of this antibody for immunohistochemistry; clinical relevance has not been evaluated.



Flow cytometric analysis of HepG2 cells using CD38 Antibody (C-term)(bottom histogram) compared to a negative control cell (top histogram). FITC-conjugated goat-anti-rabbit secondary antibodies were used for the analysis.

#### **CD38 Antibody (C-term) - Background**

CD38 is a novel multifunctional ectoenzyme widely expressed in cells and tissues especially in leukocytes. CD38 also functions in cell adhesion, signal transduction and calcium signaling.

#### **CD38 Antibody (C-term) - References**

Horenstein, A.L., Mol. Med. 15 (3-4), 76-84 (2009) Liu, Q., Biochemistry 47 (52), 13966-13973 (2008) Liu, Q., Chem. Biol. 15 (10), 1068-1078 (2008)