

**DLG7 Antibody (Center)**  
**Purified Rabbit Polyclonal Antibody (Pab)**  
**Catalog # AP2810C****Specification**

---

**DLG7 Antibody (Center) - Product Information**

Application	<b>WB, IHC-P, FC,E</b>
Primary Accession	<a href="#">Q15398</a>
Reactivity	<b>Human</b>
Host	<b>Rabbit</b>
Clonality	<b>Polyclonal</b>
Isotype	<b>Rabbit IgG</b>
Calculated MW	<b>95115</b>
Antigen Region	<b>228-258</b>

**DLG7 Antibody (Center) - Additional Information****Gene ID** 9787**Other Names**

Disks large-associated protein 5, DAP-5, Discs large homolog 7, Disks large-associated protein DLG7, Hepatoma up-regulated protein, HURP, DLGAP5, DLG7, KIAA0008

**Target/Specificity**

This DLG7 antibody is generated from rabbits immunized with a KLH conjugated synthetic peptide between 228-258 amino acids from the Central region of human DLG7.

**Dilution**WB~~1:1000  
IHC-P~~1:50~100  
FC~~1:10~50**Format**

Purified polyclonal antibody supplied in PBS with 0.09% (W/V) sodium azide. This antibody is prepared by Saturated Ammonium Sulfate (SAS) precipitation followed by dialysis against PBS.

**Storage**

Maintain refrigerated at 2-8°C for up to 2 weeks. For long term storage store at -20°C in small aliquots to prevent freeze-thaw cycles.

**Precautions**

DLG7 Antibody (Center) is for research use only and not for use in diagnostic or therapeutic procedures.

**DLG7 Antibody (Center) - Protein Information****Name** DLGAP5

### Synonyms DLG7, KIAA0008

**Function** Potential cell cycle regulator that may play a role in carcinogenesis of cancer cells. Mitotic phosphoprotein regulated by the ubiquitin-proteasome pathway. Key regulator of adherens junction integrity and differentiation that may be involved in CDH1-mediated adhesion and signaling in epithelial cells.

### Cellular Location

Nucleus. Cytoplasm. Cytoplasm, cytoskeleton, spindle. Note=Localizes to the spindle in mitotic cells. Colocalizes with CDH1 at sites of cell-cell contact in intestinal epithelial cells

### Tissue Location

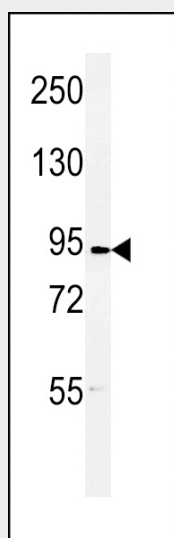
Abundantly expressed in fetal liver. Expressed at lower levels in bone marrow, testis, colon, and placenta

### DLG7 Antibody (Center) - Protocols

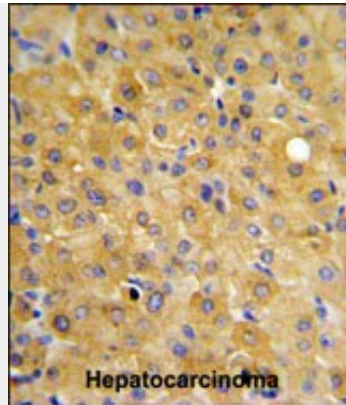
Provided below are standard protocols that you may find useful for product applications.

- [Western Blot](#)
- [Blocking Peptides](#)
- [Dot Blot](#)
- [Immunohistochemistry](#)
- [Immunofluorescence](#)
- [Immunoprecipitation](#)
- [Flow Cytometry](#)
- [Cell Culture](#)

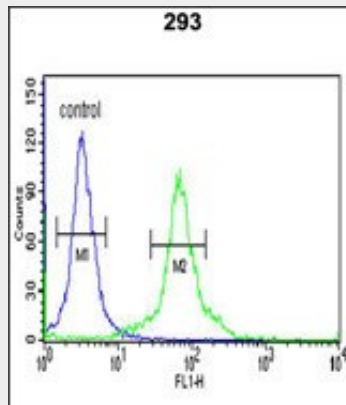
### DLG7 Antibody (Center) - Images



Western blot analysis of DLG7 Antibody (Center) (Cat. #AP2810c) in 293 cell line lysates (35ug/lane).DLG7 (arrow) was detected using the purified Pab.



DLG7 Antibody (Center) (Cat. #AP2810c) IHC analysis in formalin fixed and paraffin embedded hepatocarcinoma followed by peroxidase conjugation of the secondary antibody and DAB staining. This data demonstrates the use of the DLG7 Antibody (Center) for immunohistochemistry. Clinical relevance has not been evaluated.



DLG7 Antibody (Center) (Cat. #AP2810c) flow cytometric analysis of 293 cells (right histogram) compared to a negative control cell (left histogram). FITC-conjugated goat-anti-rabbit secondary antibodies were used for the analysis.

### **DLG7 Antibody (Center) - Background**

DLG7 is potential cell cycle regulator that may play a role in carcinogenesis of cancer cells. DLG7 is mitotic phosphoprotein regulated by the ubiquitin-proteasome pathway. DLG7 is key regulator of adherens junction integrity and differentiation that may be involved in CDH1-mediated adhesion and signaling in epithelial cells.

### **DLG7 Antibody (Center) - References**

de Reynies, A., et al. *J. Clin. Oncol.* 27(7):1108-1115(2009) Wong, J., et al. *Mol. Biol. Cell* 19(5):2083-2091(2008) Gudmundsson, K.O., et al. *Stem Cells* 25(6):1498-1506(2007)