

**SSB Antibody (C-term)**  
**Purified Rabbit Polyclonal Antibody (Pab)**  
**Catalog # AP2801b**

**Specification**

---

**SSB Antibody (C-term) - Product Information**

Application	<b>WB, IHC-P,E</b>
Primary Accession	<a href="#">P05455</a>
Other Accession	<a href="#">Q04504</a>
Reactivity	<b>Human</b>
Predicted	<b>Rabbit</b>
Host	<b>Rabbit</b>
Clonality	<b>Polyclonal</b>
Isotype	<b>Rabbit IgG</b>
Calculated MW	<b>46837</b>
Antigen Region	<b>366-397</b>

**SSB Antibody (C-term) - Additional Information**

**Gene ID** 6741

**Other Names**

Lupus La protein, La autoantigen, La ribonucleoprotein, Sjogren syndrome type B antigen, SS-B, SSB

**Target/Specificity**

This SSB antibody is generated from rabbits immunized with a KLH conjugated synthetic peptide between 366-397 amino acids from the C-terminal region of human SSB.

**Dilution**

WB~~1:1000  
IHC-P~~1:50~100

**Format**

Purified polyclonal antibody supplied in PBS with 0.09% (W/V) sodium azide. This antibody is prepared by Saturated Ammonium Sulfate (SAS) precipitation followed by dialysis against PBS.

**Storage**

Maintain refrigerated at 2-8°C for up to 2 weeks. For long term storage store at -20°C in small aliquots to prevent freeze-thaw cycles.

**Precautions**

SSB Antibody (C-term) is for research use only and not for use in diagnostic or therapeutic procedures.

**SSB Antibody (C-term) - Protein Information**

**Name** SSB

**Function** Binds to the 3' poly(U) terminus of nascent RNA polymerase III transcripts, protecting them from exonuclease digestion and facilitating their folding and maturation (PubMed:[2470590](#), PubMed:[3192525](#)). In case of Coxsackievirus B3 infection, binds to the viral internal ribosome entry site (IRES) and stimulates the IRES- mediated translation (PubMed:[12384597](#)).

#### Cellular Location

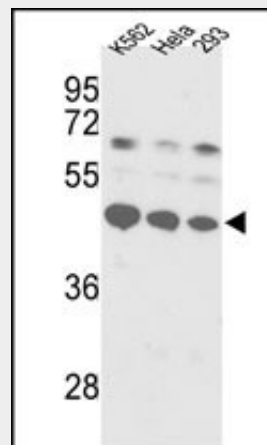
Nucleus.

#### SSB Antibody (C-term) - Protocols

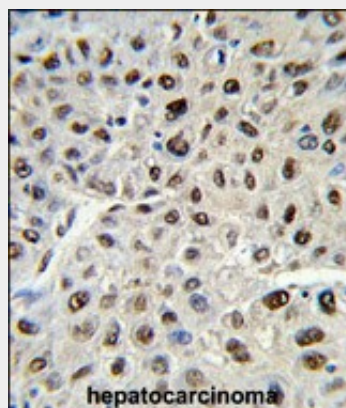
Provided below are standard protocols that you may find useful for product applications.

- [Western Blot](#)
- [Blocking Peptides](#)
- [Dot Blot](#)
- [Immunohistochemistry](#)
- [Immunofluorescence](#)
- [Immunoprecipitation](#)
- [Flow Cytometry](#)
- [Cell Culture](#)

#### SSB Antibody (C-term) - Images



Western blot analysis of SSB Antibody (C-term) (Cat.#AP2801b) in K562, HeLa, 293 cell line lysates (35ug/lane). SSB (arrow) was detected using the purified Pab.



Formalin-fixed and paraffin-embedded human hepatocarcinoma reacted with SSB Antibody

(C-term) (Cat.#AP2801b), which was peroxidase-conjugated to the secondary antibody, followed by DAB staining. This data demonstrates the use of this antibody for immunohistochemistry; clinical relevance has not been evaluated.

#### **SSB Antibody (C-term) - Background**

SSB is involved in diverse aspects of RNA metabolism, including binding and protecting 3-prime UUU(OH) elements of newly RNA polymerase III -transcribed RNA, processing 5-prime and 3-prime ends of pre-tRNA precursors, acting as an RNA chaperone, and binding viral RNAs associated with hepatitis C virus. This protein was originally defined by its reactivity with autoantibodies from patients with Sjogren syndrome and systemic lupus erythematosus.

#### **SSB Antibody (C-term) - References**

- Bitko,V., J. Virol. 82 (16), 7977-7987 (2008)  
Kotik-Kogan,O., Structure 16 (6), 852-862 (2008)  
Biswas,D., Clin. Rheumatol. 27 (6), 717-722 (2008)