

SSB Antibody (N-term)
Purified Rabbit Polyclonal Antibody (Pab)
Catalog # AP2801a

Specification

SSB Antibody (N-term) - Product Information

| | |
|-------------------|------------------------|
| Application | WB, IHC-P, FC,E |
| Primary Accession | P05455 |
| Other Accession | P10881 |
| Reactivity | Human |
| Predicted | Bovine |
| Host | Rabbit |
| Clonality | Polyclonal |
| Isotype | Rabbit IgG |
| Antigen Region | 66-96 |

SSB Antibody (N-term) - Additional Information

Gene ID 6741

Other Names

Lupus La protein, La autoantigen, La ribonucleoprotein, Sjogren syndrome type B antigen, SS-B, SSB

Target/Specificity

This SSB antibody is generated from rabbits immunized with a KLH conjugated synthetic peptide between 66-96 amino acids from the N-terminal region of human SSB.

Dilution

WB~~1:1000
IHC-P~~1:50~100
FC~~1:10~50

Format

Purified polyclonal antibody supplied in PBS with 0.09% (W/V) sodium azide. This antibody is prepared by Saturated Ammonium Sulfate (SAS) precipitation followed by dialysis against PBS.

Storage

Maintain refrigerated at 2-8°C for up to 2 weeks. For long term storage store at -20°C in small aliquots to prevent freeze-thaw cycles.

Precautions

SSB Antibody (N-term) is for research use only and not for use in diagnostic or therapeutic procedures.

SSB Antibody (N-term) - Protein Information

Name SSB

Function Binds to the 3' poly(U) terminus of nascent RNA polymerase III transcripts, protecting them from exonuclease digestion and facilitating their folding and maturation (PubMed:[2470590](#), PubMed:[3192525](#)). In case of Coxsackievirus B3 infection, binds to the viral internal ribosome entry site (IRES) and stimulates the IRES- mediated translation (PubMed:[12384597](#)).

Cellular Location

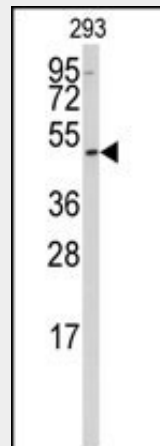
Nucleus.

SSB Antibody (N-term) - Protocols

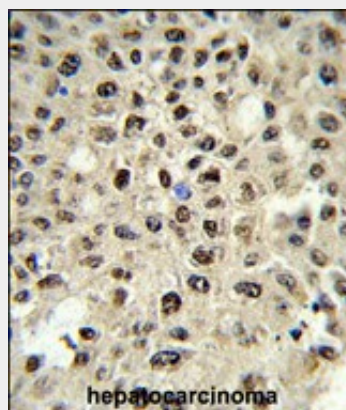
Provided below are standard protocols that you may find useful for product applications.

- [Western Blot](#)
- [Blocking Peptides](#)
- [Dot Blot](#)
- [Immunohistochemistry](#)
- [Immunofluorescence](#)
- [Immunoprecipitation](#)
- [Flow Cytometry](#)
- [Cell Culture](#)

SSB Antibody (N-term) - Images

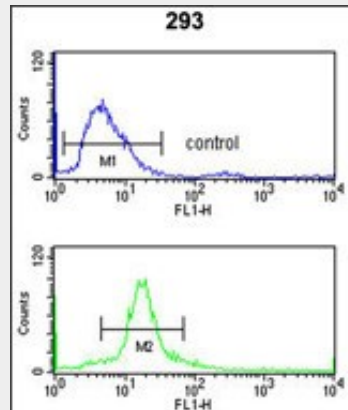


Western blot analysis of anti-SSB Antibody (N-term) (Cat. #AP2801a) in 293 cell line lysates (35ug/lane).SSB(arrow) was detected using the purified Pab.



Formalin-fixed and paraffin-embedded human hepatocarcinoma reacted with SSB Antibody

(N-term)(Cat. #AP2801a) , which was peroxidase-conjugated to the secondary antibody, followed by DAB staining. This data demonstrates the use of this antibody for immunohistochemistry; clinical relevance has not been evaluated.



SSB Antibody (N-term) (Cat. #AP2801a) flow cytometry analysis of 293 cells (bottom histogram) compared to a negative control cell (top histogram).FITC-conjugated goat-anti-rabbit secondary antibodies were used for the analysis.

SSB Antibody (N-term) - Background

SSB is involved in diverse aspects of RNA metabolism, including binding and protecting 3-prime UUU(OH) elements of newly RNA polymerase III -transcribed RNA, processing 5-prime and 3-prime ends of pre-tRNA precursors, acting as an RNA chaperone, and binding viral RNAs associated with hepatitis C virus. This protein was originally defined by its reactivity with autoantibodies from patients with Sjogren syndrome and systemic lupus erythematosus.

SSB Antibody (N-term) - References

Bitko,V., J. Virol. 82 (16), 7977-7987 (2008) Kotik-Kogan,O., Structure 16 (6), 852-862 (2008)
Biswas,D., Clin. Rheumatol. 27 (6), 717-722 (2008)

SSB Antibody (N-term) - Citations

- [The cellular protein La functions in enhancement of virus release through lipid rafts facilitated by murine leukemia virus glycosylated Gag.](#)