

**NSE Antibody (Y25)**  
**Affinity Purified Rabbit Polyclonal Antibody (Pab)**  
**Catalog # AP2780b**

**Specification**

---

**NSE Antibody (Y25) - Product Information**

Application	WB, IHC-P-Leica,E
Primary Accession	<a href="#">P09104</a>
Other Accession	<a href="#">P17183</a> , <a href="#">P04764</a> , <a href="#">P17182</a> , <a href="#">NP_001966</a>
Reactivity	Human, Mouse, Rat
Predicted	Rat
Host	Rabbit
Clonality	Polyclonal
Isotype	Rabbit IgG
Antigen Region	6-32

**NSE Antibody (Y25) - Additional Information**

**Gene ID** 2026

**Other Names**

Gamma-enolase, 2-phospho-D-glycerate hydro-lyase, Enolase 2, Neural enolase, Neuron-specific enolase, NSE, ENO2

**Target/Specificity**

This NSE antibody is generated from rabbits immunized with a KLH conjugated synthetic peptide between 6-32 amino acids from human NSE.

**Dilution**

WB~~1:4000  
IHC-P-Leica~~1:500

**Format**

Purified polyclonal antibody supplied in PBS with 0.09% (W/V) sodium azide. This antibody is purified through a protein A column, followed by peptide affinity purification.

**Storage**

Maintain refrigerated at 2-8°C for up to 2 weeks. For long term storage store at -20°C in small aliquots to prevent freeze-thaw cycles.

**Precautions**

NSE Antibody (Y25) is for research use only and not for use in diagnostic or therapeutic procedures.

**NSE Antibody (Y25) - Protein Information**

**Name** ENO2

**Function** Has neurotrophic and neuroprotective properties on a broad spectrum of central nervous system (CNS) neurons. Binds, in a calcium- dependent manner, to cultured neocortical neurons and promotes cell survival (By similarity).

#### Cellular Location

Cytoplasm. Cell membrane. Note=Can translocate to the plasma membrane in either the homodimeric (alpha/alpha) or heterodimeric (alpha/gamma) form

#### Tissue Location

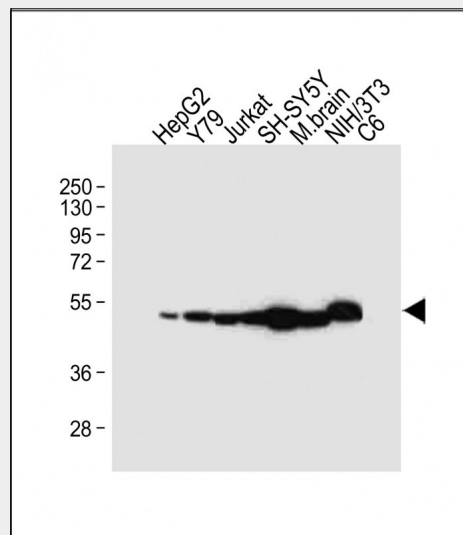
The alpha/alpha homodimer is expressed in embryo and in most adult tissues. The alpha/beta heterodimer and the beta/beta homodimer are found in striated muscle, and the alpha/gamma heterodimer and the gamma/gamma homodimer in neurons

### NSE Antibody (Y25) - Protocols

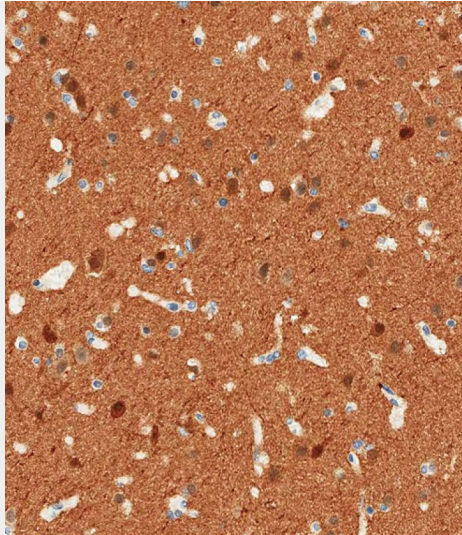
Provided below are standard protocols that you may find useful for product applications.

- [Western Blot](#)
- [Blocking Peptides](#)
- [Dot Blot](#)
- [Immunohistochemistry](#)
- [Immunofluorescence](#)
- [Immunoprecipitation](#)
- [Flow Cytometry](#)
- [Cell Culture](#)

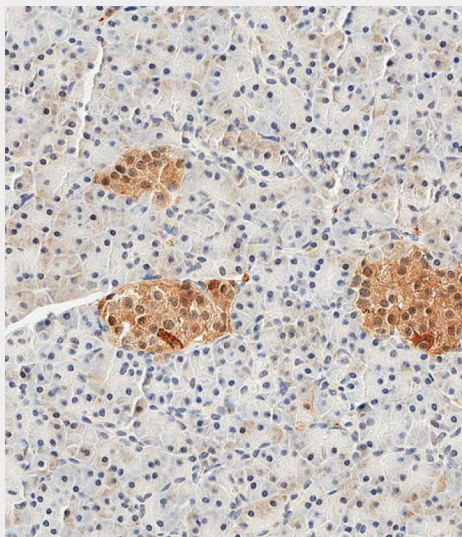
### NSE Antibody (Y25) - Images



All lanes : Anti-NSE Antibody (Y25) at 1:4000 dilution Lane 1: HepG2 whole cell lysate Lane 2: Y79 whole cell lysate Lane 3: Jurkat whole cell lysate Lane 4: SH-SY5Y whole cell lysate Lane 5: Mouse brain tissue lysate Lane 6: NIH/3T3 whole cell lysate Lane 7: C6 whole cell lysate Lysates/proteins at 20 µg per lane. Secondary Goat Anti-Rabbit IgG, (H+L), Peroxidase conjugated at 1/10000 dilution. Predicted band size : 47 kDa Blocking/Dilution buffer: 5% NFDM/TBST.



Immunohistochemical analysis of paraffin-embedded Human brain tissue using AP2780b performed on the Leica® BOND RXm. Tissue was fixed with formaldehyde at room temperature, antigen retrieval was by heat mediation with a EDTA buffer (pH9. 0). Samples were incubated with primary antibody(1:500) for 1 hours at room temperature. A undiluted biotinylated CRF Anti-Polyvalent HRP Polymer antibody was used as the secondary antibody.



Immunohistochemical analysis of paraffin-embedded Human pancreas tissue using AP2780b performed on the Leica® BOND RXm. Tissue was fixed with formaldehyde at room temperature, antigen retrieval was by heat mediation with a EDTA buffer (pH9. 0). Samples were incubated with primary antibody(1:500) for 1 hours at room temperature. A undiluted biotinylated CRF Anti-Polyvalent HRP Polymer antibody was used as the secondary antibody.

### **NSE Antibody (Y25) - Background**

NSE is one of the three enolase isoenzymes found in mammals. This isoenzyme, a homodimer, is found in mature neurons and cells of neuronal origin. A switch from alpha enolase to gamma enolase occurs in neural tissue during development in rats and primates.

### **NSE Antibody (Y25) - References**

Kotaska,K., Neuro Endocrinol. Lett. 28 (6), 761-764 (2007)  
Forooghian,F., J. Clin. Immunol. 27 (4), 388-396 (2007)

Rech,T.H., Crit Care 10 (5), R133 (2006)  
Oliva,D., Genomics 10 (1), 157-165 (1991)