

**B2M Antibody (N-term)**  
**Purified Rabbit Polyclonal Antibody (Pab)**  
**Catalog # AP2771A**

**Specification**

---

**B2M Antibody (N-term) - Product Information**

Application	<b>WB, IHC-P, FC,E</b>
Primary Accession	<a href="#">P61769</a>
Reactivity	<b>Human</b>
Host	<b>Rabbit</b>
Clonality	<b>Polyclonal</b>
Isotype	<b>Rabbit IgG</b>
Calculated MW	<b>13715</b>
Antigen Region	<b>8-39</b>

**B2M Antibody (N-term) - Additional Information**

**Gene ID** 567

**Other Names**

Beta-2-microglobulin, Beta-2-microglobulin form pl 53, B2M

**Target/Specificity**

This B2M antibody is generated from rabbits immunized with a KLH conjugated synthetic peptide between 8-39 amino acids from the N-terminal region of human B2M.

**Dilution**

WB~~1:1000  
IHC-P~~1:10~50  
FC~~1:10~50

**Format**

Purified polyclonal antibody supplied in PBS with 0.09% (W/V) sodium azide. This antibody is prepared by Saturated Ammonium Sulfate (SAS) precipitation followed by dialysis against PBS.

**Storage**

Maintain refrigerated at 2-8°C for up to 2 weeks. For long term storage store at -20°C in small aliquots to prevent freeze-thaw cycles.

**Precautions**

B2M Antibody (N-term) is for research use only and not for use in diagnostic or therapeutic procedures.

**B2M Antibody (N-term) - Protein Information**

**Name** B2M ([HGNC:914](#))

**Function** Component of the class I major histocompatibility complex (MHC). Involved in the

presentation of peptide antigens to the immune system. Exogenously applied M.tuberculosis EsxA or EsxA-EsxB (or EsxA expressed in host) binds B2M and decreases its export to the cell surface (total protein levels do not change), probably leading to defects in class I antigen presentation (PubMed:[25356553](#)).

#### Cellular Location

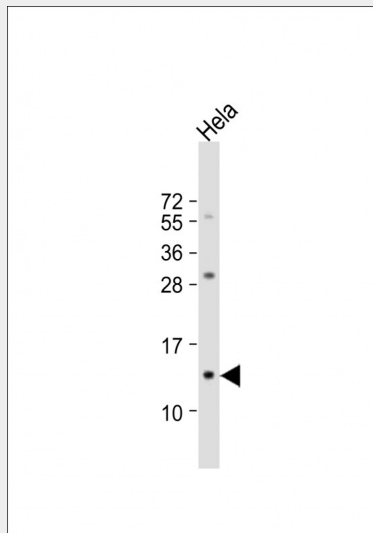
Secreted. Cell surface. Note=Detected in serum and urine (PubMed:1336137, PubMed:7554280). {ECO:0000269|PubMed:7554280, ECO:0000269|Ref.6}

#### B2M Antibody (N-term) - Protocols

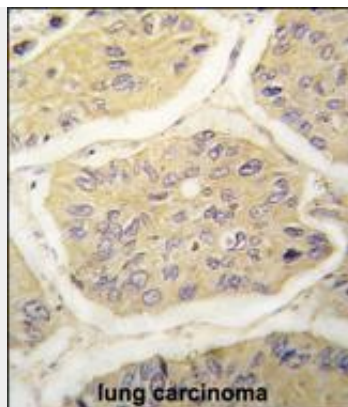
Provided below are standard protocols that you may find useful for product applications.

- [Western Blot](#)
- [Blocking Peptides](#)
- [Dot Blot](#)
- [Immunohistochemistry](#)
- [Immunofluorescence](#)
- [Immunoprecipitation](#)
- [Flow Cytometry](#)
- [Cell Culture](#)

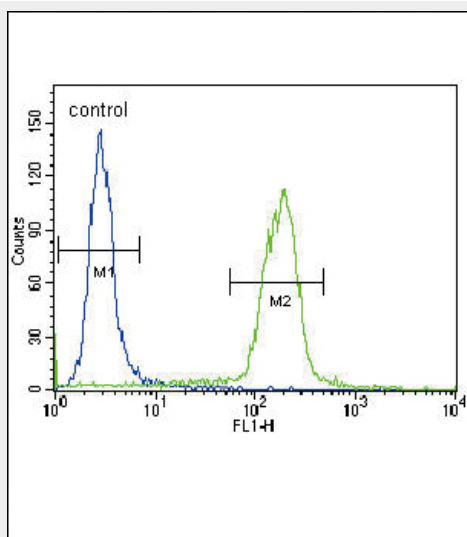
#### B2M Antibody (N-term) - Images



Anti-B2M Antibody (N-term) at 1:1000 dilution + HeLa whole cell lysate Lysates/proteins at 20 µg per lane. Secondary Goat Anti-Rabbit IgG, (H+L), Peroxidase conjugated at 1/10000 dilution. Predicted band size : 14 kDa Blocking/Dilution buffer: 5% NFDN/TBST.



Formalin-fixed and paraffin-embedded human lung carcinoma tissue reacted with B2M antibody (N-term) (Cat.#AP2771a), which was peroxidase-conjugated to the secondary antibody, followed by DAB staining. This data demonstrates the use of this antibody for immunohistochemistry; clinical relevance has not been evaluated.



B2M Antibody (N-term) (Cat. #AP2771a) flow cytometric analysis of Hela cells (right histogram) compared to a negative control cell (left histogram). FITC-conjugated goat-anti-rabbit secondary antibodies were used for the analysis.

### **B2M Antibody (N-term) - Background**

Beta-2-microglobulin is a serum protein found in association with the major histocompatibility complex (MHC) class I heavy chain on the surface of nearly all nucleated cells.

### **B2M Antibody (N-term) - References**

- Sakata, M., J. Mol. Biol. 382 (5), 1242-1255 (2008)
- Huang, W.C., Clin. Cancer Res. 14 (17), 5341-5347 (2008)
- Gattoni-Celli, S., Cancer Res. 52 (5), 1201-1204 (1992)