

FZD1 Antibody (C-term)
Purified Rabbit Polyclonal Antibody (Pab)
Catalog # AP2755B

Specification

FZD1 Antibody (C-term) - Product Information

Application	WB,E
Primary Accession	O9UP38
Other Accession	O61090 , O75084 , O57329 , O8AVJ9 , O9PUK8 , O9I9M5 , Q08463 , O70421 , O57328
Reactivity	Human
Predicted	Chicken, Mouse, Rat, Xenopus
Host	Rabbit
Clonality	Polyclonal
Isotype	Rabbit IgG
Antigen Region	504-533

FZD1 Antibody (C-term) - Additional Information

Gene ID 8321

Other Names

Frizzled-1, Fz-1, hFz1, FzE1, FZD1

Target/Specificity

This FZD1 antibody is generated from rabbits immunized with a KLH conjugated synthetic peptide between 504-533 amino acids from the C-terminal region of human FZD1.

Dilution

WB~~1:1000

Format

Purified polyclonal antibody supplied in PBS with 0.09% (W/V) sodium azide. This antibody is prepared by Saturated Ammonium Sulfate (SAS) precipitation followed by dialysis against PBS.

Storage

Maintain refrigerated at 2-8°C for up to 2 weeks. For long term storage store at -20°C in small aliquots to prevent freeze-thaw cycles.

Precautions

FZD1 Antibody (C-term) is for research use only and not for use in diagnostic or therapeutic procedures.

FZD1 Antibody (C-term) - Protein Information

Name FZD1

Function Receptor for Wnt proteins (PubMed:[10557084](#)). Activated by WNT3A, WNT3, WNT1 and

to a lesser extent WNT2, but apparently not by WNT4, WNT5A, WNT5B, WNT6, WNT7A or WNT7B (PubMed:[10557084](#)). Contradictory results showing activation by WNT7B have been described for mouse (By similarity). Functions in the canonical Wnt/beta-catenin signaling pathway (PubMed:[10557084](#)). The canonical Wnt/beta-catenin signaling pathway leads to the activation of disheveled proteins, inhibition of GSK-3 kinase, nuclear accumulation of beta-catenin and activation of Wnt target genes (PubMed:[10557084](#)). A second signaling pathway involving PKC and calcium fluxes has been seen for some family members, but it is not yet clear if it represents a distinct pathway or if it can be integrated in the canonical pathway, as PKC seems to be required for Wnt-mediated inactivation of GSK-3 kinase. Both pathways seem to involve interactions with G-proteins. May be involved in transduction and intercellular transmission of polarity information during tissue morphogenesis and/or in differentiated tissues (Probable).

Cellular Location

Cell membrane; Multi-pass membrane protein

Tissue Location

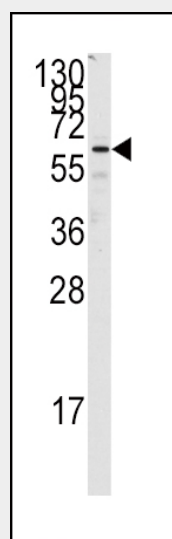
Expressed in adult heart, placenta, lung, kidney, pancreas, prostate, and ovary and in fetal lung and kidney

FZD1 Antibody (C-term) - Protocols

Provided below are standard protocols that you may find useful for product applications.

- [Western Blot](#)
- [Blocking Peptides](#)
- [Dot Blot](#)
- [Immunohistochemistry](#)
- [Immunofluorescence](#)
- [Immunoprecipitation](#)
- [Flow Cytometry](#)
- [Cell Culture](#)

FZD1 Antibody (C-term) - Images



Western blot analysis of anti-FZD1 Antibody (C-term) (Cat.#AP2755b) in Jurkat cell line lysates (35ug/lane).FZD1(arrow) was detected using the purified Pab.

FZD1 Antibody (C-term) - Background

Members of the 'frizzled' protein family are 7-transmembrane domain proteins that are receptors for Wnt signaling proteins. The FZD1 protein contains a signal peptide, a cysteine-rich domain in the N-terminal extracellular region, 7 transmembrane domains, and a C-terminal PDZ domain-binding motif. The FZD1 transcript is expressed in various tissues.

FZD1 Antibody (C-term) - References

Quelard, D., (et al) PLoS ONE 3 (4), E1878 (2008)
Hardie, W.D., Am. J. Respir. Cell Mol. Biol. 37 (3), 309-321 (2007)
Yang, L., J. Dermatol. Sci. 42 (2), 111-119 (2006)

FZD1 Antibody (C-term) - Citations

- [Overexpression of FZD1 and CAIX are Associated with Invasion, Metastasis, and Poor-Prognosis of the Pancreatic Ductal Adenocarcinoma.](#)
- [Transcriptional Regulation of Frizzled-1 in Human Osteoblasts by Sp1.](#)
- [Functional and association analysis of frizzled 1 \(FZD1\) promoter haplotypes with femoral neck geometry.](#)