

ANGEL2 Antibody (Center)
Purified Rabbit Polyclonal Antibody (Pab)
Catalog # AP2749c

Specification

ANGEL2 Antibody (Center) - Product Information

| | |
|-------------------|------------------------|
| Application | WB, IHC-P,E |
| Primary Accession | Q5VTE6 |
| Reactivity | Human |
| Host | Rabbit |
| Clonality | Polyclonal |
| Isotype | Rabbit IgG |
| Calculated MW | 62339 |
| Antigen Region | 108-138 |

ANGEL2 Antibody (Center) - Additional Information

Gene ID 90806

Other Names

Protein angel homolog 2, ANGEL2, KIAA0759L

Target/Specificity

This ANGEL2 antibody is generated from rabbits immunized with a KLH conjugated synthetic peptide between 108-138 amino acids from the Central region of human ANGEL2.

Dilution

WB~~1:1000
IHC-P~~1:10~50

Format

Purified polyclonal antibody supplied in PBS with 0.09% (W/V) sodium azide. This antibody is prepared by Saturated Ammonium Sulfate (SAS) precipitation followed by dialysis against PBS.

Storage

Maintain refrigerated at 2-8°C for up to 2 weeks. For long term storage store at -20°C in small aliquots to prevent freeze-thaw cycles.

Precautions

ANGEL2 Antibody (Center) is for research use only and not for use in diagnostic or therapeutic procedures.

ANGEL2 Antibody (Center) - Protein Information

Name ANGEL2

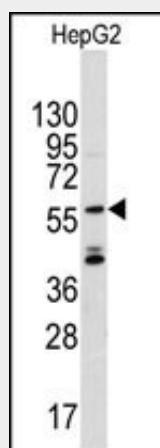
Synonyms KIAA0759L

ANGEL2 Antibody (Center) - Protocols

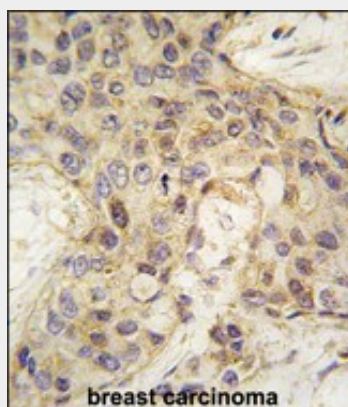
Provided below are standard protocols that you may find useful for product applications.

- [Western Blot](#)
- [Blocking Peptides](#)
- [Dot Blot](#)
- [Immunohistochemistry](#)
- [Immunofluorescence](#)
- [Immunoprecipitation](#)
- [Flow Cytometry](#)
- [Cell Culture](#)

ANGEL2 Antibody (Center) - Images



Western blot analysis of anti-ANGEL2 Pab (Cat.#AP2749c) in CEM cell line lysates (35ug/lane). ANGEL2 (arrow) was detected using the purified Pab.



Formalin-fixed and paraffin-embedded human breast carcinoma tissue reacted with ANGEL2 antibody (Center) (Cat.#AP2749c), which was peroxidase-conjugated to the secondary antibody, followed by DAB staining. This data demonstrates the use of this antibody for immunohistochemistry; clinical relevance has not been evaluated.

ANGEL2 Antibody (Center) - Background

ANGEL 2 is a member of the CCR4/nocturin family.

ANGEL2 Antibody (Center) - References

Lipovich,L.,Gene 286 (2), 203-213 (2002)
Gregory S.G.,Nature 441:315-321(2006).