

**ADCY2 Antibody (C-term)**  
**Purified Rabbit Polyclonal Antibody (Pab)**  
**Catalog # AP2748b**

**Specification**

---

**ADCY2 Antibody (C-term) - Product Information**

Application	<b>WB, IHC-P,E</b>
Primary Accession	<a href="#">Q08462</a>
Reactivity	<b>Human</b>
Host	<b>Rabbit</b>
Clonality	<b>Polyclonal</b>
Isotype	<b>Rabbit IgG</b>
Calculated MW	<b>123603</b>
Antigen Region	<b>940-969</b>

**ADCY2 Antibody (C-term) - Additional Information**

**Gene ID** 108

**Other Names**

Adenylate cyclase type 2, ATP pyrophosphate-lyase 2, Adenylate cyclase type II, Adenylyl cyclase 2, ADCY2, KIAA1060

**Target/Specificity**

This ADCY2 antibody is generated from rabbits immunized with a KLH conjugated synthetic peptide between 940-969 amino acids from the C-terminal region of human ADCY2.

**Dilution**

WB~~1:1000  
IHC-P~~1:10~50

**Format**

Purified polyclonal antibody supplied in PBS with 0.09% (W/V) sodium azide. This antibody is prepared by Saturated Ammonium Sulfate (SAS) precipitation followed by dialysis against PBS.

**Storage**

Maintain refrigerated at 2-8°C for up to 2 weeks. For long term storage store at -20°C in small aliquots to prevent freeze-thaw cycles.

**Precautions**

ADCY2 Antibody (C-term) is for research use only and not for use in diagnostic or therapeutic procedures.

**ADCY2 Antibody (C-term) - Protein Information**

**Name** ADCY2

**Synonyms** KIAA1060

**Function** Catalyzes the formation of the signaling molecule cAMP in response to G-protein signaling (PubMed:[15385642](#)). Down-stream signaling cascades mediate changes in gene expression patterns and lead to increased IL6 production. Functions in signaling cascades downstream of the muscarinic acetylcholine receptors (By similarity).

**Cellular Location**

Membrane; Multi-pass membrane protein. Cell membrane; Multi-pass membrane protein. Cytoplasm

**Tissue Location**

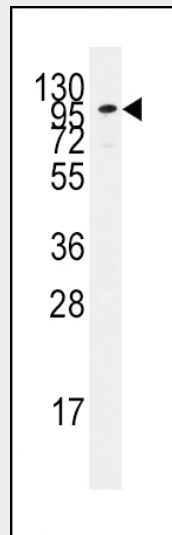
Detected in zona glomerulosa and zona fasciculata in the adrenal gland (at protein level) (PubMed:11549699). Expressed in brain, especially in caudate nucleus, cerebellum and hippocampus

**ADCY2 Antibody (C-term) - Protocols**

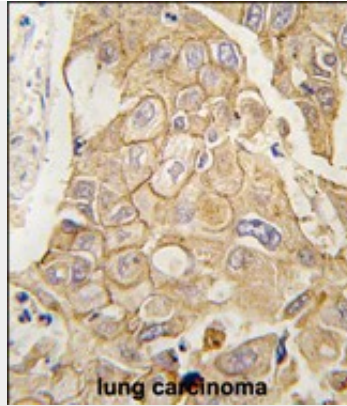
Provided below are standard protocols that you may find useful for product applications.

- [Western Blot](#)
- [Blocking Peptides](#)
- [Dot Blot](#)
- [Immunohistochemistry](#)
- [Immunofluorescence](#)
- [Immunoprecipitation](#)
- [Flow Cytometry](#)
- [Cell Culture](#)

**ADCY2 Antibody (C-term) - Images**



Western blot analysis of anti-ADCY2 Pab (Cat.#AP2748b) in Jurkat cell line lysates (35ug/lane). ADCY2(arrow) was detected using the purified Pab.



Formalin-fixed and paraffin-embedded human lung carcinoma tissue reacted with ADCY2 antibody (C-term)(Cat.#AP2748b), which was peroxidase-conjugated to the secondary antibody, followed by DAB staining. This data demonstrates the use of this antibody for immunohistochemistry; clinical relevance has not been evaluated.

#### **ADCY2 Antibody (C-term) - Background**

ADCY2 is a member of the family of adenylate cyclases, which are membrane-associated enzymes that catalyze the formation of the secondary messenger cyclic adenosine monophosphate(cAMP). This enzyme is insensitive to  $Ca^{2+}$ /calmodulin, and is stimulated by the G protein beta and gamma subunit complex.

#### **ADCY2 Antibody (C-term) - References**

- Uhl,G.R.,Arch. Gen. Psychiatry 65 (6), 683-693 (2008)
- Ludwig,M.G.,J. Recept. Signal Transduct. Res. 22 (1-4), 79-110 (2002)
- Cote,M., J. Clin. Endocrinol. Metab. 86 (9), 4495-4503 (2001)