

**MATH1/HATH1/ATOH1 Antibody (C-term)**  
**Affinity Purified Rabbit Polyclonal Antibody (Pab)**  
**Catalog # AP2702B**

**Specification**

---

**MATH1/HATH1/ATOH1 Antibody (C-term) - Product Information**

Application	WB,E
Primary Accession	<a href="#">O92858</a>
Other Accession	<a href="#">P48985</a>
Reactivity	Human
Predicted	Mouse
Host	Rabbit
Clonality	Polyclonal
Isotype	Rabbit IgG
Calculated MW	38160
Antigen Region	323-354

**MATH1/HATH1/ATOH1 Antibody (C-term) - Additional Information**

**Gene ID** 474

**Other Names**

Protein atonal homolog 1, Class A basic helix-loop-helix protein 14, bHLHa14, Helix-loop-helix protein hATH-1, hATH1, ATOH1, ATH1, BHLHA14

**Target/Specificity**

This MATH1/HATH1/ATOH1 antibody is generated from rabbits immunized with a KLH conjugated synthetic peptide between 323-354 amino acids from the C-terminal region of human MATH1/HATH1/ATOH1.

**Dilution**

WB~~1:1000

**Format**

Purified polyclonal antibody supplied in PBS with 0.09% (W/V) sodium azide. This antibody is purified through a protein A column, followed by peptide affinity purification.

**Storage**

Maintain refrigerated at 2-8°C for up to 2 weeks. For long term storage store at -20°C in small aliquots to prevent freeze-thaw cycles.

**Precautions**

MATH1/HATH1/ATOH1 Antibody (C-term) is for research use only and not for use in diagnostic or therapeutic procedures.

**MATH1/HATH1/ATOH1 Antibody (C-term) - Protein Information**

**Name** ATOH1 ([HGNC:797](#))

### Synonyms ATH1, BHLHA14

**Function** Transcriptional regulator. Activates E box-dependent transcription in collaboration with TCF3/E47, but the activity is completely antagonized by the negative regulator of neurogenesis HES1. Plays a role in the differentiation of subsets of neural cells by activating E box-dependent transcription (By similarity).

### Cellular Location

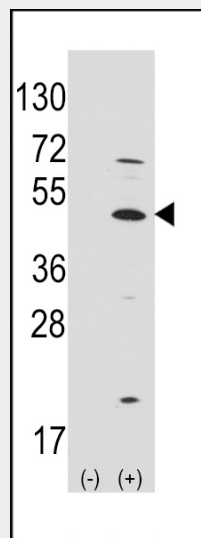
Nucleus.

### MATH1/HATH1/ATOH1 Antibody (C-term) - Protocols

Provided below are standard protocols that you may find useful for product applications.

- [Western Blot](#)
- [Blocking Peptides](#)
- [Dot Blot](#)
- [Immunohistochemistry](#)
- [Immunofluorescence](#)
- [Immunoprecipitation](#)
- [Flow Cytometry](#)
- [Cell Culture](#)

### MATH1/HATH1/ATOH1 Antibody (C-term) - Images



Western blot analysis of ATOH1 (arrow) using rabbit polyclonal ATOH1 Antibody (C-term) (Cat.#AP2702b).293 cell lysates (2 ug/lane) either nontransfected (Lane 1) or transiently transfected with the ATOH1 gene (Lane 2) (Origene Technologies).

### MATH1/HATH1/ATOH1 Antibody (C-term) - Background

ATOH1 belongs to the basic helix-loop-helix (BHLH) family of transcription factors. It activates E-box dependent transcription along with E47.

### MATH1/HATH1/ATOH1 Antibody (C-term) - References

Aragaki,M.,Biochem. Biophys. Res. Commun. 368 (4), 923-929 (2008)

Scheffer,D., FEBS Lett. 581 (24), 4651-4656 (2007)