

MATH1/HATH1/ATOH1 Antibody (N-term)
Affinity Purified Rabbit Polyclonal Antibody (Pab)
Catalog # AP2702A

Specification

MATH1/HATH1/ATOH1 Antibody (N-term) - Product Information

Application	WB,E
Primary Accession	O92858
Reactivity	Human, Mouse
Host	Rabbit
Clonality	Polyclonal
Isotype	Rabbit IgG
Antigen Region	78-109

MATH1/HATH1/ATOH1 Antibody (N-term) - Additional Information

Gene ID 474

Other Names

Protein atonal homolog 1, Class A basic helix-loop-helix protein 14, bHLHa14, Helix-loop-helix protein hATH-1, hATH1, ATOH1, ATH1, BHLHA14

Target/Specificity

This MATH1/HATH1/ATOH1 antibody is generated from rabbits immunized with a KLH conjugated synthetic peptide between 78-109 amino acids from the N-terminal region of human MATH1/HATH1/ATOH1.

Dilution

WB~~1:2000

Format

Purified polyclonal antibody supplied in PBS with 0.09% (W/V) sodium azide. This antibody is purified through a protein A column, followed by peptide affinity purification.

Storage

Maintain refrigerated at 2-8°C for up to 2 weeks. For long term storage store at -20°C in small aliquots to prevent freeze-thaw cycles.

Precautions

MATH1/HATH1/ATOH1 Antibody (N-term) is for research use only and not for use in diagnostic or therapeutic procedures.

MATH1/HATH1/ATOH1 Antibody (N-term) - Protein Information

Name ATOH1 ([HGNC:797](#))

Synonyms ATH1, BHLHA14

Function Transcriptional regulator. Activates E box-dependent transcription in collaboration with TCF3/E47, but the activity is completely antagonized by the negative regulator of neurogenesis HES1. Plays a role in the differentiation of subsets of neural cells by activating E box-dependent transcription (By similarity).

Cellular Location

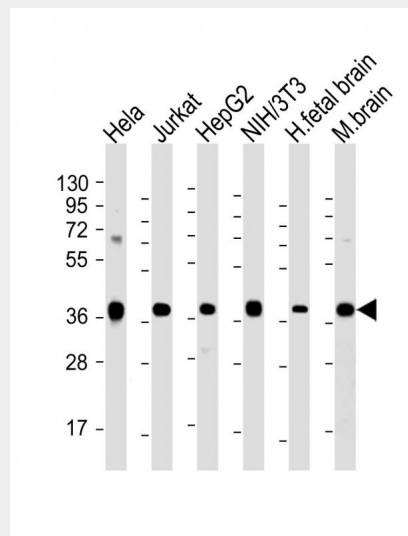
Nucleus.

MATH1/HATH1/ATOH1 Antibody (N-term) - Protocols

Provided below are standard protocols that you may find useful for product applications.

- [Western Blot](#)
- [Blocking Peptides](#)
- [Dot Blot](#)
- [Immunohistochemistry](#)
- [Immunofluorescence](#)
- [Immunoprecipitation](#)
- [Flow Cytometry](#)
- [Cell Culture](#)

MATH1/HATH1/ATOH1 Antibody (N-term) - Images



All lanes : Anti-ATOH1 (Human N-term) at 1:2000 dilution Lane 1: HeLa whole cell lysate Lane 2: Jurkat whole cell lysate Lane 3: HepG2 whole cell lysate Lane 4: NIH/3T3 whole cell lysate Lane 5: human fetal brain lysate Lane 6: mouse brain lysate Lysates/proteins at 20 µg per lane. Secondary Goat Anti-Rabbit IgG, (H+L), Peroxidase conjugated at 1/10000 dilution. Predicted band size : 38 kDa Blocking/Dilution buffer: 5% NFDm/TBST.

MATH1/HATH1/ATOH1 Antibody (N-term) - Background

ATOH1 belongs to the basic helix-loop-helix (BHLH) family of transcription factors. It activates E-box dependent transcription along with E47.

MATH1/HATH1/ATOH1 Antibody (N-term) - References

Aragaki,M.,Biochem. Biophys. Res. Commun. 368 (4), 923-929 (2008)

Scheffer,D., FEBS Lett. 581 (24), 4651-4656 (2007)