

**CPT1B Antibody (C-term)**  
**Purified Rabbit Polyclonal Antibody (Pab)**  
**Catalog # AP2532b****Specification**

---

**CPT1B Antibody (C-term) - Product Information**

Application	<b>WB, IHC-P,E</b>
Primary Accession	<a href="#">O92523</a>
Other Accession	<a href="#">NP_004368</a>
Reactivity	<b>Human</b>
Host	<b>Rabbit</b>
Clonality	<b>Polyclonal</b>
Isotype	<b>Rabbit IgG</b>
Calculated MW	<b>87801</b>
Antigen Region	<b>606-637</b>

**CPT1B Antibody (C-term) - Additional Information****Gene ID** 1375**Other Names**

Carnitine O-palmitoyltransferase 1, muscle isoform, CPT1-M, Carnitine O-palmitoyltransferase I, muscle isoform, CPT I, CPTI-M, Carnitine palmitoyltransferase 1B, Carnitine palmitoyltransferase I-like protein, CPT1B, KIAA1670

**Target/Specificity**

This CPT1B antibody is generated from rabbits immunized with a KLH conjugated synthetic peptide between 606-637 amino acids from the C-terminal region of human CPT1B.

**Dilution**

WB~~1:1000  
IHC-P~~1:50~100

**Format**

Purified polyclonal antibody supplied in PBS with 0.09% (W/V) sodium azide. This antibody is prepared by Saturated Ammonium Sulfate (SAS) precipitation followed by dialysis against PBS.

**Storage**

Maintain refrigerated at 2-8°C for up to 2 weeks. For long term storage store at -20°C in small aliquots to prevent freeze-thaw cycles.

**Precautions**

CPT1B Antibody (C-term) is for research use only and not for use in diagnostic or therapeutic procedures.

**CPT1B Antibody (C-term) - Protein Information****Name** CPT1B

### Synonyms KIAA1670

**Function** Catalyzes the transfer of the acyl group of long-chain fatty acid-CoA conjugates onto carnitine, an essential step for the mitochondrial uptake of long-chain fatty acids and their subsequent beta-oxidation in the mitochondrion.

### Cellular Location

Mitochondrion outer membrane; Multi-pass membrane protein

### Tissue Location

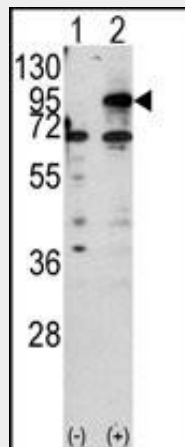
Strong expression in heart and skeletal muscle. No expression in liver and kidney

### CPT1B Antibody (C-term) - Protocols

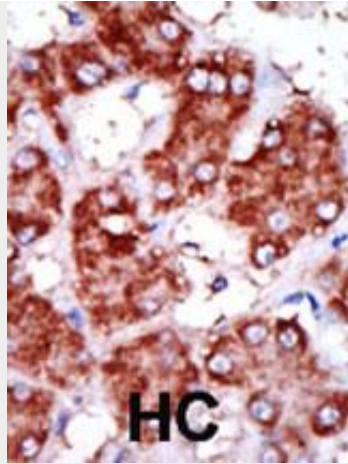
Provided below are standard protocols that you may find useful for product applications.

- [Western Blot](#)
- [Blocking Peptides](#)
- [Dot Blot](#)
- [Immunohistochemistry](#)
- [Immunofluorescence](#)
- [Immunoprecipitation](#)
- [Flow Cytometry](#)
- [Cell Culture](#)

### CPT1B Antibody (C-term) - Images



Western blot analysis of CPT1B (arrow) using rabbit polyclonal CPT1B Antibody (C-term) (Cat.#AP2532b). 293 cell lysates (2 ug/lane) either nontransfected (Lane 1) or transiently transfected with the CPT1B gene (Lane 2).



Formalin-fixed and paraffin-embedded human cancer tissue reacted with the primary antibody, which was peroxidase-conjugated to the secondary antibody, followed by DAB staining. This data demonstrates the use of this antibody for immunohistochemistry; clinical relevance has not been evaluated. BC = breast carcinoma; HC = hepatocarcinoma.

#### **CPT1B Antibody (C-term) - Background**

CPT1B is a member of the carnitine/choline acetyltransferase family, and is the rate-controlling enzyme of the long-chain fatty acid beta-oxidation pathway in muscle mitochondria. This enzyme is required for the net transport of long-chain fatty acyl-CoAs from the cytoplasm into the mitochondria.

#### **CPT1B Antibody (C-term) - References**

Dai, J., et al., *Biochem. Biophys. Res. Commun.* 301(3):758-763 (2003).  
van der Leij, F.R., et al., *J. Biol. Chem.* 277(30):26994-27005 (2002).  
Hirosawa, M., et al., *DNA Res.* 8(1):1-9 (2001).  
Yamazaki, N., et al., *J. Biol. Chem.* 275(41):31739-31746 (2000).  
Britton, C.H., et al., *Genomics* 40(1):209-211 (1997).