

BMI1 Antibody (C-term)
Purified Rabbit Polyclonal Antibody (Pab)
Catalog # AP2513B**Specification**

BMI1 Antibody (C-term) - Product Information

Application	WB, IHC-P,E
Primary Accession	P35226
Other Accession	P25916 , Q5SDR3 , Q32KX7
Reactivity	Human
Predicted	Bovine, Chicken, Mouse
Host	Rabbit
Clonality	Polyclonal
Isotype	Rabbit IgG
Antigen Region	257-286

BMI1 Antibody (C-term) - Additional Information

Gene ID 100532731;648

Other Names

Polycomb complex protein BMI-1, Polycomb group RING finger protein 4, RING finger protein 51, BMI1, PCGF4, RNF51

Target/Specificity

This BMI1 antibody is generated from rabbits immunized with a KLH conjugated synthetic peptide between 257-286 amino acids from the C-terminal region of human BMI1.

Dilution

WB~~1:1000
IHC-P~~1:10~50

Format

Purified polyclonal antibody supplied in PBS with 0.09% (W/V) sodium azide. This antibody is purified through a protein A column, followed by peptide affinity purification.

Storage

Maintain refrigerated at 2-8°C for up to 2 weeks. For long term storage store at -20°C in small aliquots to prevent freeze-thaw cycles.

Precautions

BMI1 Antibody (C-term) is for research use only and not for use in diagnostic or therapeutic procedures.

BMI1 Antibody (C-term) - Protein Information

Name BMI1

Synonyms PCGF4, RNF51

Function Component of a Polycomb group (PcG) multiprotein PRC1-like complex, a complex class required to maintain the transcriptionally repressive state of many genes, including Hox genes, throughout development. PcG PRC1 complex acts via chromatin remodeling and modification of histones; it mediates monoubiquitination of histone H2A 'Lys-119', rendering chromatin heritably changed in its expressibility (PubMed:[15386022](#), PubMed:[16359901](#), PubMed:[16714294](#), PubMed:[21772249](#), PubMed:[25355358](#), PubMed:[26151332](#), PubMed:[27827373](#)). The complex composed of RNF2, UB2D3 and BMI1 binds nucleosomes, and has activity only with nucleosomal histone H2A (PubMed:[21772249](#), PubMed:[25355358](#)). In the PRC1-like complex, regulates the E3 ubiquitin-protein ligase activity of RNF2/RING2 (PubMed:[15386022](#), PubMed:[21772249](#), PubMed:[26151332](#)).

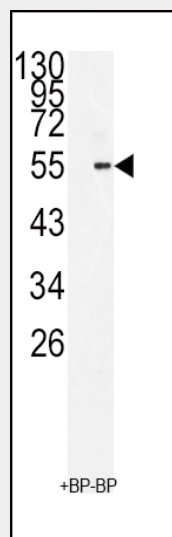
Cellular Location

Nucleus. Cytoplasm

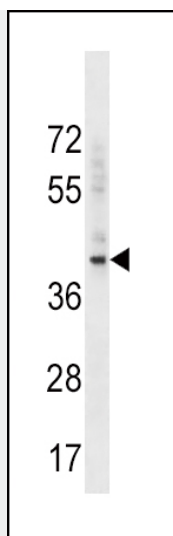
BMI1 Antibody (C-term) - Protocols

Provided below are standard protocols that you may find useful for product applications.

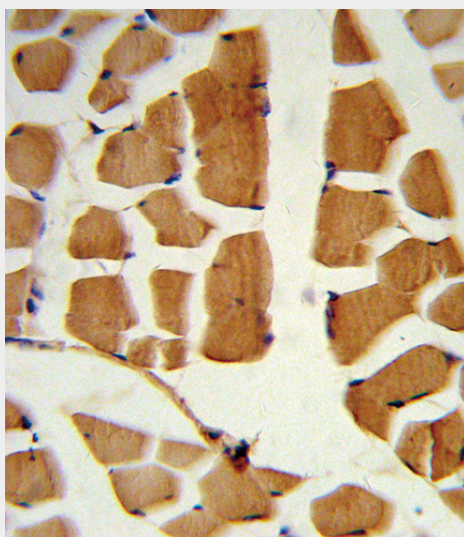
- [Western Blot](#)
- [Blocking Peptides](#)
- [Dot Blot](#)
- [Immunohistochemistry](#)
- [Immunofluorescence](#)
- [Immunoprecipitation](#)
- [Flow Cytometry](#)
- [Cell Culture](#)

BMI1 Antibody (C-term) - Images

Western blot analysis of BMI1 Antibody (C-term) antibody (Cat. #AP2513b) in 293 cell line lysates (35ug/lane). BMI1 (arrow) was detected using the purified Pab.



BMI1 Antibody (C-term) (Cat. #AP2513b) western blot analysis in K562 cell line lysates (35ug/lane). This demonstrates the BMI1 antibody detected the BMI1 protein (arrow).



Formalin-fixed and paraffin-embedded human skeletal muscle reacted with BMI1 Antibody (C-term), which was peroxidase-conjugated to the secondary antibody, followed by DAB staining. This data demonstrates the use of this antibody for immunohistochemistry; clinical relevance has not been evaluated.

BMI1 Antibody (C-term) - Background

BMI is a component of the Polycomb group (PcG) multiprotein PRC1 complex, a complex required to maintain the transcriptionally repressive state of many genes, including Hox genes, throughout development. PcG PRC1 complex acts via chromatin remodeling and modification of histones; it mediates monoubiquitination of histone H2A 'Lys-119', rendering chromatin heritably changed in its expressibility. In the PRC1 complex, it is required to stimulate the E3 ubiquitin ligase activity of RNF2/RING2. BMI cooperates with the MYC oncogene to produce B-lymphomas.

BMI1 Antibody (C-term) - References

Smith, K.S., et al., Mol. Cell 12(2):393-400 (2003). Xia, Z.B., et al., Proc. Natl. Acad. Sci. U.S.A. 100(14):8342-8347 (2003). Itahana, K., et al., Mol. Cell. Biol. 23(1):389-401 (2003). Dimri, G.P., et al., Cancer Res. 62(16):4736-4745 (2002). Bardos, J.I., et al., J. Biol. Chem. 275(37):28785-28792

(2000).

BMI1 Antibody (C-term) - Citations

- [Sonic hedgehog regulates Bmi1 in human medulloblastoma brain tumor-initiating cells.](#)
- [Severe polyposis in Apc\(1322T\) mice is associated with submaximal Wnt signalling and increased expression of the stem cell marker Lgr5.](#)
- [Bmi1 lineage tracing identifies a self-renewing pancreatic acinar cell subpopulation capable of maintaining pancreatic organ homeostasis.](#)