

**TPST1 Antibody (C-term)**  
**Affinity Purified Rabbit Polyclonal Antibody (Pab)**  
**Catalog # AP2321b**

**Specification**

---

**TPST1 Antibody (C-term) - Product Information**

Application	WB,E
Primary Accession	<a href="#">O60507</a>
Other Accession	<a href="#">O3KR92</a> , <a href="#">O70281</a> , <a href="#">NP_003587</a>
Reactivity	Human, Mouse
Predicted	Rat
Host	Rabbit
Clonality	Polyclonal
Isotype	Rabbit IgG
Calculated MW	42188
Antigen Region	336-366

**TPST1 Antibody (C-term) - Additional Information**

**Gene ID** 8460

**Other Names**

Protein-tyrosine sulfotransferase 1, Tyrosylprotein sulfotransferase 1, TPST-1, TPST1

**Target/Specificity**

This TPST1 antibody is generated from rabbits immunized with a KLH conjugated synthetic peptide between 336-366 amino acids from the C-terminal region of human TPST1.

**Dilution**

WB~~1:1000

**Format**

Purified polyclonal antibody supplied in PBS with 0.09% (W/V) sodium azide. This antibody is purified through a protein A column, followed by peptide affinity purification.

**Storage**

Maintain refrigerated at 2-8°C for up to 2 weeks. For long term storage store at -20°C in small aliquots to prevent freeze-thaw cycles.

**Precautions**

TPST1 Antibody (C-term) is for research use only and not for use in diagnostic or therapeutic procedures.

**TPST1 Antibody (C-term) - Protein Information**

**Name** TPST1

**Function** Catalyzes the O-sulfation of tyrosine residues within acidic motifs of polypeptides, using

3'-phosphoadenylyl sulfate (PAPS) as cosubstrate.

#### Cellular Location

Golgi apparatus membrane; Single-pass type II membrane protein

#### Tissue Location

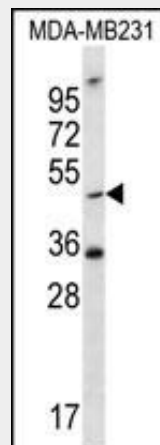
Ubiquitous. Detected in heart, brain, placenta, lung, liver, skeletal muscle, kidney and pancreas

### TPST1 Antibody (C-term) - Protocols

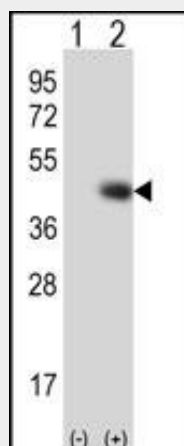
Provided below are standard protocols that you may find useful for product applications.

- [Western Blot](#)
- [Blocking Peptides](#)
- [Dot Blot](#)
- [Immunohistochemistry](#)
- [Immunofluorescence](#)
- [Immunoprecipitation](#)
- [Flow Cytometry](#)
- [Cell Culture](#)

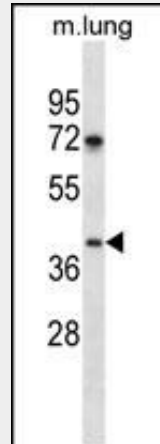
### TPST1 Antibody (C-term) - Images



TPST1 Antibody (K351) (Cat. #AP2321b) western blot analysis in MDA-MB231 cell line lysates (35ug/lane). This demonstrates the TPST1 antibody detected the TPST1 protein (arrow).



Western blot analysis of TPST1 (arrow) using rabbit polyclonal TPST1 Antibody (K351) (Cat. #AP2321b). 293 cell lysates (2 ug/lane) either nontransfected (Lane 1) or transiently transfected (Lane 2) with the TPST1 gene.



TPST1 Antibody (K351) (Cat. #AP2321b) western blot analysis in mouse lung tissue lysates (35ug/lane). This demonstrates the TPST1 antibody detected the TPST1 protein (arrow).

#### **TPST1 Antibody (C-term) - Background**

The ADP-ribosylation factor (Arf) family are highly conserved members of the Ras superfamily of regulatory GTP-binding proteins. Arf proteins participate in routing of intracellular proteins to and within the Golgi complex. Cellular functions include maintenance of organelle integrity, coat protein assembly, as an activator of phospholipase D. The Arf family is divided functionally into the Arf and the Arf-like (Arl) proteins. The ARF proteins are categorized as class I (ARF1, ARF2, and ARF3), class II (ARF4 and ARF5) and class III (ARF6) and members of each class share a common gene organization.

#### **TPST1 Antibody (C-term) - References**

- Seibert, C., et al., Proc. Natl. Acad. Sci. U.S.A. 99(17):11031-11036 (2002).
- Goettsch, S., et al., Biochem. Biophys. Res. Commun. 294(3):541-546 (2002).
- Popovic, M., et al., Eur. J. Hum. Genet. 10(4):250-258 (2002).
- Ouyang, Y.B., et al., J. Biol. Chem. 273(38):24770-24774 (1998).
- Ouyang, Y., et al., Proc. Natl. Acad. Sci. U.S.A. 95(6):2896-2901 (1998).