

**ART3 Antibody (C-term)**  
**Purified Rabbit Polyclonal Antibody (Pab)**  
**Catalog # AP2312b**

**Specification**

---

**ART3 Antibody (C-term) - Product Information**

Application	WB,E
Primary Accession	<a href="#">O13508</a>
Other Accession	<a href="#">NP_001170</a>
Reactivity	Human
Host	Rabbit
Clonality	Polyclonal
Isotype	Rabbit IgG
Calculated MW	43923
Antigen Region	280-310

**ART3 Antibody (C-term) - Additional Information**

**Gene ID** 419

**Other Names**

Ecto-ADP-ribosyltransferase 3, ADP-ribosyltransferase C2 and C3 toxin-like 3, ARTC3, Mono(ADP-ribosyl)transferase 3, NAD(P)(+)-arginine ADP-ribosyltransferase 3, ART3, TMART

**Target/Specificity**

This ART3 antibody is generated from rabbits immunized with a KLH conjugated synthetic peptide between 280-310 amino acids from the C-terminal region of human ART3.

**Dilution**

WB~~1:4000

**Format**

Purified polyclonal antibody supplied in PBS with 0.09% (W/V) sodium azide. This antibody is prepared by Saturated Ammonium Sulfate (SAS) precipitation followed by dialysis against PBS.

**Storage**

Maintain refrigerated at 2-8°C for up to 2 weeks. For long term storage store at -20°C in small aliquots to prevent freeze-thaw cycles.

**Precautions**

ART3 Antibody (C-term) is for research use only and not for use in diagnostic or therapeutic procedures.

**ART3 Antibody (C-term) - Protein Information**

**Name** ART3

**Synonyms** TMART

### Cellular Location

Cell membrane; Lipid-anchor, GPI-anchor.

### Tissue Location

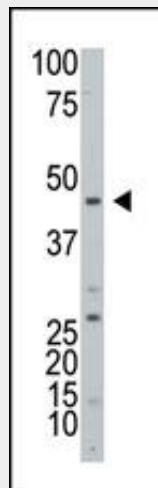
Testis specific.

### ART3 Antibody (C-term) - Protocols

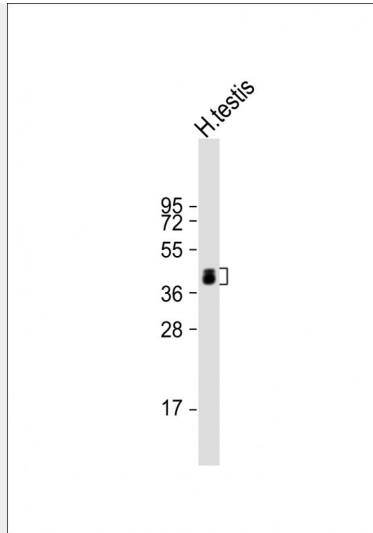
Provided below are standard protocols that you may find useful for product applications.

- [Western Blot](#)
- [Blocking Peptides](#)
- [Dot Blot](#)
- [Immunohistochemistry](#)
- [Immunofluorescence](#)
- [Immunoprecipitation](#)
- [Flow Cytometry](#)
- [Cell Culture](#)

### ART3 Antibody (C-term) - Images



Western blot analysis of ART3 Antibody (C-term) in HL60 cell line lysates (25ug/lane). ART3 (arrow) was detected using the purified Pab (4 ug/ml).



Anti-ART3 Antibody at 1:4000 dilution + human testis lysate Lysates/proteins at 20 µg per lane. Secondary Goat Anti-Rabbit IgG, (H+L), Peroxidase conjugated at 1/10000 dilution. Predicted band size : 44 kDa Blocking/Dilution buffer: 5% NFD/MTBST.

### **ART3 Antibody (C-term) - Background**

Mono-ADP-ribosylation involves the transfer of the ADP-ribose moiety from NAD<sup>+</sup> to a specific amino acid in the target protein. The rodent mono-ADP-ribosyltransferase RT6 is a glycosylphosphatidylinositol (GPI)-anchored membrane protein specifically expressed at the cell surface of rat and mouse T lymphocytes. The predicted 367-amino acid human ART3 protein has an estimated molecular mass of 41.5 kD and contains a hydrophobic peptide signal at its N terminus, 3 consensus motifs specific to enzymes catalyzing ADP-ribose transfer, a hydrophobic C-terminal sequence characteristic of a GPI-anchored protein, a novel motif repeated 3 times at its C terminus, and 1 potential glycosylation site.<sup>1</sup> The ART3 and rodent RT6 proteins share 35% amino acid identity.

### **ART3 Antibody (C-term) - References**

- Strausberg, R.L., et al., Proc. Natl. Acad. Sci. U.S.A. 99(26):16899-16903 (2002).  
Koch-Nolte, F., et al., Genomics 39(3):370-376 (1997).  
Levy, I., et al., FEBS Lett. 382(3):276-280 (1996).