

**Neurofilament-L antibody**  
**Purified Rabbit Polyclonal Antibody (Pab)**  
**Catalog # AP22455a**

**Specification**

---

**Neurofilament-L antibody - Product Information**

|                   |                        |
|-------------------|------------------------|
| Application       | WB,E                   |
| Primary Accession | <a href="#">P07196</a> |
| Reactivity        | Human, Mouse           |
| Host              | Rabbit                 |
| Clonality         | polyclonal             |
| Isotype           | Rabbit Ig              |
| Calculated MW     | 61517                  |

**Neurofilament-L antibody - Additional Information**

**Gene ID** 4747

**Other Names**

Neurofilament light polypeptide, NF-L, 68 kDa neurofilament protein, Neurofilament triplet L protein, NEFL, NF68, NFL

**Target/Specificity**

This antibody is generated from a rabbit immunized with a KLH conjugated synthetic peptide between amino acids from human.

**Dilution**

WB~~1:2000

**Format**

Purified polyclonal antibody supplied in PBS with 0.09% (W/V) sodium azide. This antibody is purified through a protein A column, followed by peptide affinity purification.

**Storage**

Maintain refrigerated at 2-8°C for up to 2 weeks. For long term storage store at -20°C in small aliquots to prevent freeze-thaw cycles.

**Precautions**

Neurofilament-L antibody is for research use only and not for use in diagnostic or therapeutic procedures.

**Neurofilament-L antibody - Protein Information**

**Name** NEFL

**Synonyms** NF68, NFL

**Function** Neurofilaments usually contain three intermediate filament proteins: NEFL, NEFM, and

NEFH which are involved in the maintenance of neuronal caliber. May additionally cooperate with the neuronal intermediate filament proteins PRPH and INA to form neuronal filamentous networks (By similarity).

#### Cellular Location

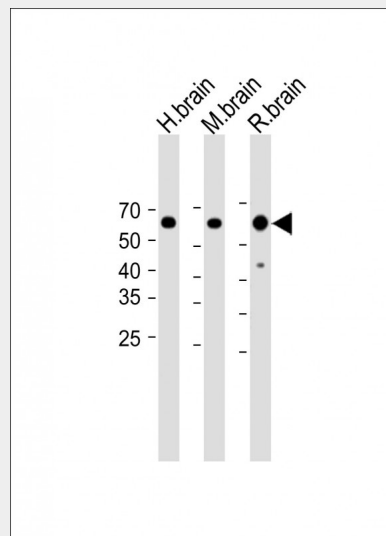
Cell projection, axon {ECO:0000250|UniProtKB:P08551}. Cytoplasm, cytoskeleton {ECO:0000250|UniProtKB:P08551}

#### Neurofilament-L antibody - Protocols

Provided below are standard protocols that you may find useful for product applications.

- [Western Blot](#)
- [Blocking Peptides](#)
- [Dot Blot](#)
- [Immunohistochemistry](#)
- [Immunofluorescence](#)
- [Immunoprecipitation](#)
- [Flow Cytometry](#)
- [Cell Culture](#)

#### Neurofilament-L antibody - Images



All lanes: Anti-Neurofilament-L antibody at 1:2000 dilution Lane 1: Human brain lysate Lane 2: Mouse brain lysate Lane 3: Rat brain lysate Lysates/proteins at 20 µg per lane. Secondary: Goat Anti-Rabbit IgG, (H+L), Peroxidase conjugated (ASP1615) at 1/15000 dilution. Observed band size: 62 KDa Blocking/Dilution buffer: 5% NFDN/TBST.

#### Neurofilament-L antibody - Background

Neurofilaments usually contain three intermediate filament proteins: NEFL, NEFM, and NEFH which are involved in the maintenance of neuronal caliber. May additionally cooperate with the neuronal intermediate filament proteins PRPH and INA to form neuronal filamentous networks (By similarity).

#### Neurofilament-L antibody - References

Julien J.-P., et al. Biochim. Biophys. Acta 909:10-20(1987).

Perez-Olle R., et al. J. Cell Sci. 115:4937-4946(2002).  
Nusbaum C., et al. Nature 439:331-335(2006).  
Mural R.J., et al. Submitted (JUL-2005) to the EMBL/GenBank/DDBJ databases.  
Pospelov V.A., et al. Cell Growth Differ. 5:187-196(1994).