

**FGL1 antibody**  
**Purified Rabbit Polyclonal Antibody (Pab)**  
**Catalog # AP22451a**

**Specification**

---

**FGL1 antibody - Product Information**

Application	WB,E
Primary Accession	<a href="#">Q08830</a>
Reactivity	Human
Host	Rabbit
Clonality	polyclonal
Isotype	Rabbit Ig
Calculated MW	36379

**FGL1 antibody - Additional Information**

**Gene ID** 2267

**Other Names**

Fibrinogen-like protein 1, HP-041, Hepassocin, HPS, Hepatocyte-derived fibrinogen-related protein 1, HFREP-1, Liver fibrinogen-related protein 1 {ECO:0000303|Ref.3}, LFIRE-1 {ECO:0000303|Ref.3}, FGL1 {ECO:0000303|PubMed:18039467, ECO:0000312|HGNC:HGNC:3695}

**Target/Specificity**

This antibody is generated from a rabbit immunized with a KLH conjugated synthetic peptide between amino acids from human.

**Dilution**

WB~~1:500

**Format**

Purified polyclonal antibody supplied in PBS with 0.09% (W/V) sodium azide. This antibody is purified through a protein A column, followed by peptide affinity purification.

**Storage**

Maintain refrigerated at 2-8°C for up to 2 weeks. For long term storage store at -20°C in small aliquots to prevent freeze-thaw cycles.

**Precautions**

FGL1 antibody is for research use only and not for use in diagnostic or therapeutic procedures.

**FGL1 antibody - Protein Information**

**Name** FGL1 {ECO:0000303|PubMed:18039467, ECO:0000312|HGNC:HGNC:3695}

**Function** Immune suppressive molecule that inhibits antigen-specific T- cell activation by acting as a major ligand of LAG3 (PubMed:[30580966](#)). Responsible for LAG3 T-cell inhibitory function (PubMed:[30580966](#)). Binds LAG3 independently from MHC class II (MHC-II) (PubMed:[30580966](#)).

Secreted by, and promotes growth of, hepatocytes (PubMed:[11470158](#), PubMed:[19880967](#)).

#### Cellular Location

Secreted. Note=Secreted in the blood plasma

#### Tissue Location

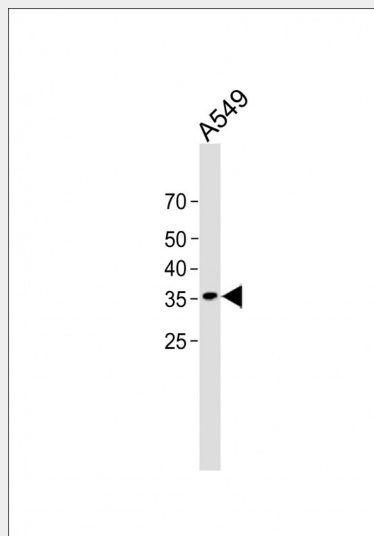
Under normal conditions, liver-specific.

### FGL1 antibody - Protocols

Provided below are standard protocols that you may find useful for product applications.

- [Western Blot](#)
- [Blocking Peptides](#)
- [Dot Blot](#)
- [Immunohistochemistry](#)
- [Immunofluorescence](#)
- [Immunoprecipitation](#)
- [Flow Cytometry](#)
- [Cell Culture](#)

### FGL1 antibody - Images



All lanes: Anti-FGL1 antibody at 1:500 dilution + A549 whole cell lysate Lysates/proteins at 20  $\mu$ g per lane. Secondary: Goat Anti-Rabbit IgG, (H+L), Peroxidase conjugated (ASP1615) at 1/15000 dilution. Observed band size: 36 KDa Blocking/Dilution buffer: 5% NFDM/TBST.

### FGL1 antibody - Background

Immune suppressive molecule that inhibits antigen-specific T- cell activation by acting as a major ligand of LAG3 (PubMed:30580966). Responsible for LAG3 T-cell inhibitory function (PubMed:30580966). Binds LAG3 independently from MHC class II (MHC-II) (PubMed:30580966). Secreted by, and promotes growth of, hepatocytes (PubMed:11470158, PubMed:19880967).

### FGL1 antibody - References

Yamamoto T., et al. Biochem. Biophys. Res. Commun. 193:681-687(1993).

Hara H., et al. *Biochim. Biophys. Acta* 1520:45-53(2001).

Yan J., et al. Submitted (JUL-1999) to the EMBL/GenBank/DDBJ databases.

Kalnina N., et al. Submitted (MAY-2003) to the EMBL/GenBank/DDBJ databases.

Ota T., et al. *Nat. Genet.* 36:40-45(2004).