

ROR1 antibody (C-term)
Purified Rabbit Polyclonal Antibody (Pab)
Catalog # AP22444b

Specification

ROR1 antibody (C-term) - Product Information

Application	WB,E
Primary Accession	Q01973
Reactivity	Human, Mouse
Host	Rabbit
Clonality	polyclonal
Isotype	Rabbit Ig
Calculated MW	104283

ROR1 antibody (C-term) - Additional Information

Gene ID 4919

Other Names

Inactive tyrosine-protein kinase transmembrane receptor ROR1, Neurotrophic tyrosine kinase, receptor-related 1, ROR1, NTRKR1

Target/Specificity

This antibody is generated from a rabbit immunized with a KLH conjugated synthetic peptide between amino acids from human.

Dilution

WB~~1:1000

Format

Purified polyclonal antibody supplied in PBS with 0.09% (W/V) sodium azide. This antibody is purified through a protein A column, followed by peptide affinity purification.

Storage

Maintain refrigerated at 2-8°C for up to 2 weeks. For long term storage store at -20°C in small aliquots to prevent freeze-thaw cycles.

Precautions

ROR1 antibody (C-term) is for research use only and not for use in diagnostic or therapeutic procedures.

ROR1 antibody (C-term) - Protein Information

Name ROR1

Synonyms NTRKR1

Function Has very low kinase activity in vitro and is unlikely to function as a tyrosine kinase in

vivo (PubMed:[25029443](#)). Receptor for ligand WNT5A which activate downstream NFkB signaling pathway and may result in the inhibition of WNT3A-mediated signaling (PubMed:[25029443](#), PubMed:[27162350](#)). In inner ear, crucial for spiral ganglion neurons to innervate auditory hair cells (PubMed:[27162350](#)). Via IGFBP5 ligand, forms a complex with ERBB2 to enhance CREB oncogenic signaling (PubMed:[36949068](#)).

Cellular Location

Membrane; Single-pass type I membrane protein. Cell projection, axon {ECO:0000250|UniProtKB:Q9Z139}

Tissue Location

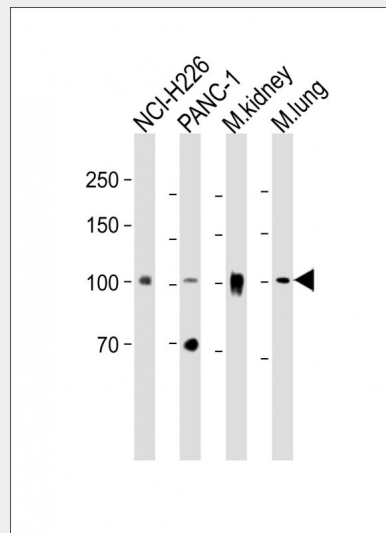
Expressed strongly in human heart, lung and kidney, but weakly in the CNS. Isoform Short is strongly expressed in fetal and adult CNS and in a variety of human cancers, including those originating from CNS or PNS neuroectoderm

ROR1 antibody (C-term) - Protocols

Provided below are standard protocols that you may find useful for product applications.

- [Western Blot](#)
- [Blocking Peptides](#)
- [Dot Blot](#)
- [Immunohistochemistry](#)
- [Immunofluorescence](#)
- [Immunoprecipitation](#)
- [Flow Cytometry](#)
- [Cell Culture](#)

ROR1 antibody (C-term) - Images



All lanes: Anti-ROR1 antibody (C-term) at 1:1000 dilution Lane 1: NCI-H226 whole cell lysate Lane 2: PANC-1 whole cell lysate Lane 3: Mouse kidney lysate Lane 4: Mouse lung lysate Lysates/proteins at 20 µg per lane. Secondary: Goat Anti-Rabbit IgG, (H+L), Peroxidase conjugated (ASP1615) at 1/15000 dilution. Observed band size: 104 KDa Blocking/Dilution buffer: 5% NFD/MTBST.

ROR1 antibody (C-term) - Background

Has very low kinase activity in vitro and is unlikely to function as a tyrosine kinase in vivo (PubMed:25029443). Receptor for ligand WNT5A which activate downstream NFkB signaling pathway and may result in the inhibition of WNT3A-mediated signaling (PubMed:25029443, PubMed:27162350). In inner ear, crucial for spiral ganglion neurons to innervate auditory hair cells (PubMed:27162350).

ROR1 antibody (C-term) - References

Masiakowski P., et al. J. Biol. Chem. 267:26181-26190(1992).
Reddy U.R., et al. Oncogene 13:1555-1559(1996).
Gregory S.G., et al. Nature 441:315-321(2006).
Mural R.J., et al. Submitted (SEP-2005) to the EMBL/GenBank/DDBJ databases.
Bainbridge T.W., et al. PLoS ONE 9:E102695-E102695(2014).