

Napsin A
Purified Rabbit Polyclonal Antibody (Pab)
Catalog # AP22443a

Specification

Napsin A - Product Information

Application	WB,E
Primary Accession	O96009
Reactivity	Mouse
Host	Rabbit
Clonality	polyclonal
Isotype	Rabbit Ig
Calculated MW	45387

Napsin A - Additional Information

Gene ID 9476

Other Names

Napsin-A, 3.4.23.-, Aspartyl protease 4, ASP4, Asp 4, Napsin-1, TA01/TA02, NAPSA, NAP1, NAPA

Target/Specificity

This antibody is generated from a rabbit immunized with a KLH conjugated synthetic peptide between amino acids from human.

Dilution

WB~~1:1000

Format

Purified polyclonal antibody supplied in PBS with 0.09% (W/V) sodium azide. This antibody is purified through a protein A column, followed by peptide affinity purification.

Storage

Maintain refrigerated at 2-8°C for up to 2 weeks. For long term storage store at -20°C in small aliquots to prevent freeze-thaw cycles.

Precautions

Napsin A is for research use only and not for use in diagnostic or therapeutic procedures.

Napsin A - Protein Information

Name NAPSA

Synonyms NAP1, NAPA

Function May be involved in processing of pneumocyte surfactant precursors.

Cellular Location

Secreted.

Tissue Location

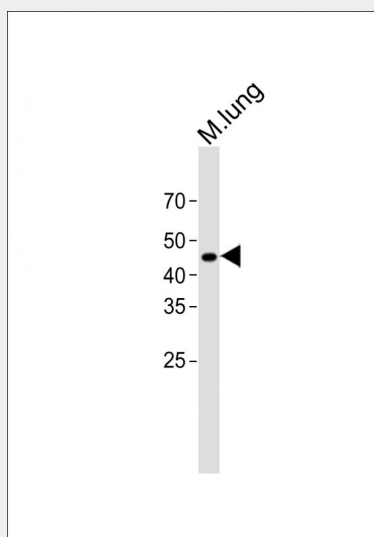
Expressed predominantly in adult lung (type II pneumocytes) and kidney and in fetal lung. Low levels in adult spleen and very low levels in peripheral blood leukocytes

Napsin A - Protocols

Provided below are standard protocols that you may find useful for product applications.

- [Western Blot](#)
- [Blocking Peptides](#)
- [Dot Blot](#)
- [Immunohistochemistry](#)
- [Immunofluorescence](#)
- [Immunoprecipitation](#)
- [Flow Cytometry](#)
- [Cell Culture](#)

Napsin A - Images



All lanes: Anti-Napsin A Antibody at 1:1000 dilution + Mouse lung lysate Lysates/proteins at 20 μ g per lane. Secondary: Goat Anti-Rabbit IgG, (H+L), Peroxidase conjugated (ASP1615) at 1/15000 dilution. Observed band size: 45 KDa Blocking/Dilution buffer: 5% NFDm/TBST.

Napsin A - Background

May be involved in processing of pneumocyte surfactant precursors.

Napsin A - References

- Tatnell P.J., et al. FEBS Lett. 441:43-48(1998).
Chuman Y., et al. FEBS Lett. 462:129-134(1999).
Yan R., et al. Nature 402:533-537(1999).
Koelsch G., et al. Submitted (OCT-1998) to the EMBL/GenBank/DDBJ databases.