

Cytokeratin 20
Purified Rabbit Polyclonal Antibody (Pab)
Catalog # AP22417a**Specification**

Cytokeratin 20 - Product Information

Application	IHC-P,E
Primary Accession	P35900
Reactivity	Human
Host	Rabbit
Clonality	polyclonal
Isotype	Rabbit Ig
Calculated MW	48487

Cytokeratin 20 - Additional Information**Gene ID** 54474**Other Names**

Keratin, type I cytoskeletal 20, Cytokeratin-20, CK-20, Keratin-20, K20, Protein IT, KRT20

Target/Specificity

This antibody is generated from a rabbit immunized with a KLH conjugated synthetic peptide between amino acids from human.

Dilution

IHC-P~~1ug/ml

Format

Purified polyclonal antibody supplied in PBS with 0.09% (W/V) sodium azide. This antibody is purified through a protein A column, followed by peptide affinity purification.

Storage

Maintain refrigerated at 2-8°C for up to 2 weeks. For long term storage store at -20°C in small aliquots to prevent freeze-thaw cycles.

Precautions

Cytokeratin 20 is for research use only and not for use in diagnostic or therapeutic procedures.

Cytokeratin 20 - Protein Information**Name** KRT20**Function** Plays a significant role in maintaining keratin filament organization in intestinal epithelia. When phosphorylated, plays a role in the secretion of mucin in the small intestine (By similarity).**Cellular Location**

Cytoplasm

Tissue Location

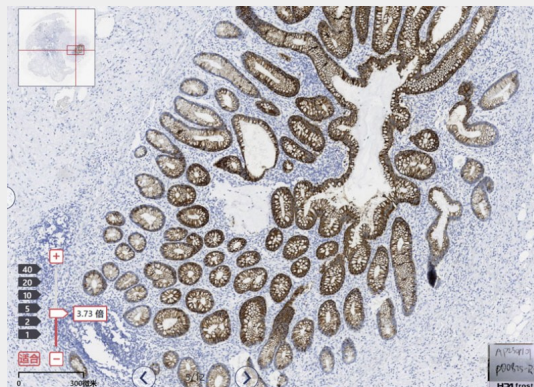
Expressed predominantly in the intestinal epithelium. Expressed in luminal cells of colonic mucosa. Also expressed in the Merkel cells of keratinized oral mucosa; specifically at the tips of some rete ridges of the gingival mucosa, in the basal layer of the palatal mucosa and in the taste buds of lingual mucosa

Cytokeratin 20 - Protocols

Provided below are standard protocols that you may find useful for product applications.

- [Western Blot](#)
- [Blocking Peptides](#)
- [Dot Blot](#)
- [Immunohistochemistry](#)
- [Immunofluorescence](#)
- [Immunoprecipitation](#)
- [Flow Cytometry](#)
- [Cell Culture](#)

Cytokeratin 20 - Images



Immunohistochemical analysis of paraffin-embedded Human appendicitis tissue using Cytokeratin 20 antibody performed on the Abcarta® FAIP-48T Fully automated IHC platform. Tissue was fixed with formaldehyde at room temperature, antigen retrieval was by heat mediation with a EDTA buffer (pH9. 0). Samples were incubated with primary antibody(Ready-to-use) for 15 min at room temperature. AmpSee™ Detection Systems□Abcepta:ADR005□ was used as the secondary antibody.

Cytokeratin 20 - Background

Plays a significant role in maintaining keratin filament organization in intestinal epithelia. When phosphorylated, plays a role in the secretion of mucin in the small intestine (By similarity).

Cytokeratin 20 - References

- Moll R.,et al.Differentiation 53:75-93(1993).
Ota T.,et al.Nat. Genet. 36:40-45(2004).
Zhou Q.,et al.J. Biol. Chem. 281:16453-16461(2006).
Calnek D.,et al.Differentiation 53:95-104(1993).
Moll R.,et al.J. Cell Biol. 111:567-580(1990).

