

**STAT3(S727) Antibody**  
**Purified Rabbit Polyclonal Antibody (Pab)**  
**Catalog # AP22381a**

### Specification

---

#### STAT3(S727) Antibody - Product Information

Application	IF, WB,E
Primary Accession	<a href="#">P40763</a>
Reactivity	Human, Mouse
Predicted	Human
Host	Rabbit
Clonality	polyclonal
Isotype	Rabbit IgG
Calculated MW	88068

#### STAT3(S727) Antibody - Additional Information

**Gene ID** 6774

#### Other Names

Signal transducer and activator of transcription 3, Acute-phase response factor, STAT3, APRF

#### Target/Specificity

This STAT3(S727) antibody is generated from a rabbit immunized with a KLH conjugated synthetic peptide between 710-740 amino acids from the human region of human STAT3(S727).

#### Dilution

IF~~1:25

WB~~1:500

#### Format

Purified polyclonal antibody supplied in PBS with 0.09% (W/V) sodium azide. This antibody is purified through a protein A column, followed by peptide affinity purification.

#### Storage

Maintain refrigerated at 2-8°C for up to 2 weeks. For long term storage store at -20°C in small aliquots to prevent freeze-thaw cycles.

#### Precautions

STAT3(S727) Antibody is for research use only and not for use in diagnostic or therapeutic procedures.

#### STAT3(S727) Antibody - Protein Information

**Name** STAT3 {ECO:0000303|PubMed:9630560, ECO:0000312|HGNC:HGNC:11364}

**Function** Signal transducer and transcription activator that mediates cellular responses to interleukins, KITLG/SCF, LEP and other growth factors (PubMed:[10688651](#), PubMed:[12359225](#),

PubMed:[12873986](#), PubMed:[15194700](#), PubMed:[15653507](#), PubMed:[16285960](#), PubMed:[17344214](#), PubMed:[18242580](#), PubMed:[18782771](#), PubMed:[22306293](#), PubMed:[23084476](#), PubMed:[28262505](#), PubMed:[32929201](#), PubMed:[38404237](#)). Once activated, recruits coactivators, such as NCOA1 or MED1, to the promoter region of the target gene (PubMed:[15653507](#), PubMed:[16285960](#), PubMed:[17344214](#), PubMed:[18782771](#), PubMed:[28262505](#), PubMed:[32929201](#)). May mediate cellular responses to activated FGFR1, FGFR2, FGFR3 and FGFR4 (PubMed:[12873986](#)). Upon activation of IL6ST/gp130 signaling by interleukin-6 (IL6), binds to the IL6-responsive elements identified in the promoters of various acute-phase protein genes (PubMed:[12359225](#)). Activated by IL31 through IL31RA (PubMed:[15194700](#)). Acts as a regulator of inflammatory response by regulating differentiation of naive CD4(+) T-cells into T-helper Th17 or regulatory T-cells (Treg): acetylation promotes its transcription activity and cell differentiation while deacetylation and oxidation of lysine residues by LOXL3 inhibits differentiation (PubMed:[28065600](#), PubMed:[28262505](#)). Involved in cell cycle regulation by inducing the expression of key genes for the progression from G1 to S phase, such as CCND1 (PubMed:[17344214](#)). Mediates the effects of LEP on melanocortin production, body energy homeostasis and lactation (By similarity). May play an apoptotic role by transactivating BIRC5 expression under LEP activation (PubMed:[18242580](#)). Cytoplasmic STAT3 represses macroautophagy by inhibiting EIF2AK2/PKR activity (PubMed:[23084476](#)). Plays a crucial role in basal beta cell functions, such as regulation of insulin secretion (By similarity). Following JAK/STAT signaling activation and as part of a complex with NFATC3 and NFATC4, binds to the alpha-beta E4 promoter region of CRYAB and activates transcription in cardiomyocytes (By similarity).

#### Cellular Location

Cytoplasm. Nucleus Note=Shuttles between the nucleus and the cytoplasm (PubMed:[29162862](#)) Translocated into the nucleus upon tyrosine phosphorylation and dimerization, in response to signaling by activated FGFR1, FGFR2, FGFR3 or FGFR4 (PubMed:[15653507](#), PubMed:[16285960](#)). Constitutive nuclear presence is independent of tyrosine phosphorylation. Predominantly present in the cytoplasm without stimuli. Upon leukemia inhibitory factor (LIF) stimulation, accumulates in the nucleus. The complex composed of BART and ARL2 plays an important role in the nuclear translocation and retention of STAT3. Identified in a complex with LYN and PAG1. Translocates to the nucleus in the presence of EDN1 (By similarity). {ECO:0000250|UniProtKB:P52631, ECO:0000269|PubMed:[15653507](#), ECO:0000269|PubMed:[16285960](#), ECO:0000269|PubMed:[29162862](#)}

#### Tissue Location

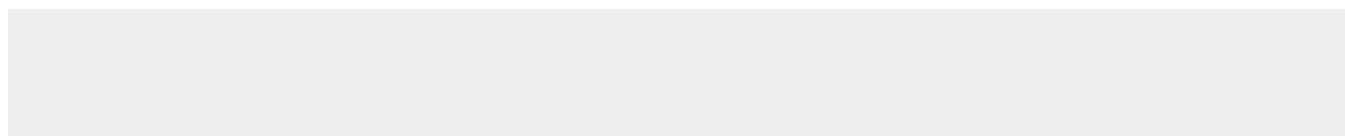
Heart, brain, placenta, lung, liver, skeletal muscle, kidney and pancreas. Expressed in naive CD4(+) T cells as well as T-helper Th17, Th1 and Th2 cells (PubMed:[31899195](#))

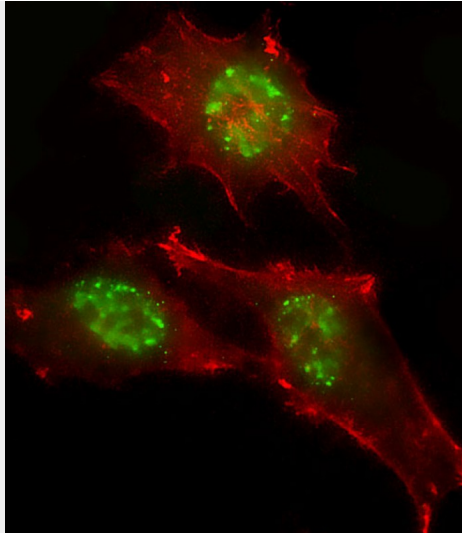
### STAT3(S727) Antibody - Protocols

Provided below are standard protocols that you may find useful for product applications.

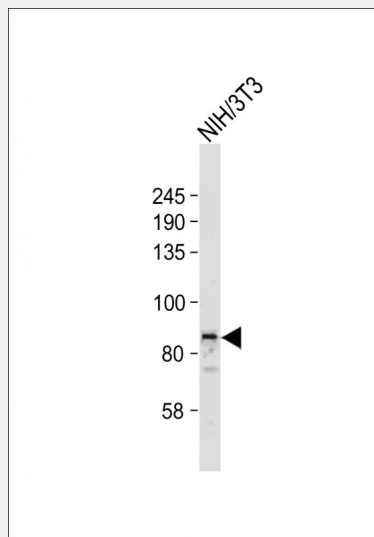
- [Western Blot](#)
- [Blocking Peptides](#)
- [Dot Blot](#)
- [Immunohistochemistry](#)
- [Immunofluorescence](#)
- [Immunoprecipitation](#)
- [Flow Cytometry](#)
- [Cell Culture](#)

### STAT3(S727) Antibody - Images

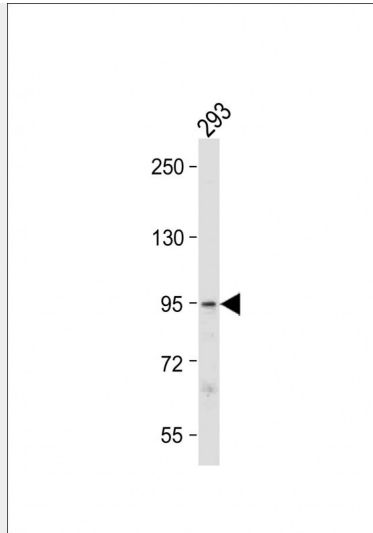




Immunofluorescent analysis of 4% paraformaldehyde-fixed, 0.1% Triton X-100 permeabilized HeLa cells labeling STAT3 with AP22381a at 1/25 dilution, followed by Dylight® 488-conjugated goat anti-Rabbit IgG secondary antibody at 1/200 dilution (green). Immunofluorescence image showing Nucleus and Weak Cytoplasm staining on HeLa cell line. Cytoplasmic actin is detected with Dylight® 554 Phalloidin(red). The nuclear counter stain is DAPI (blue).



Anti-STAT3(S727) Antibody at 1:2000 dilution + NIH/3T3 whole cell lysate Lysates/proteins at 20 µg per lane. Secondary Goat Anti-Rabbit IgG, (H+L), Peroxidase conjugated at 1/10000 dilution. Predicted band size : 88 kDa Blocking/Dilution buffer: 5% NFD/MTBST.



Anti-STAT3(S727) Antibody at 1:500 dilution + 293 whole cell lysate Lysates/proteins at 20 µg per lane. Secondary Goat Anti-Rabbit IgG, (H+L), Peroxidase conjugated at 1/10000 dilution. Predicted band size : 88 kDa Blocking/Dilution buffer: 5% NFDM/TBST.

### **STAT3(S727) Antibody - Background**

Signal transducer and transcription activator that mediates cellular responses to interleukins, KITLG/SCF and other growth factors. May mediate cellular responses to activated FGFR1, FGFR2, FGFR3 and FGFR4. Binds to the interleukin-6 (IL-6)- responsive elements identified in the promoters of various acute- phase protein genes. Activated by IL31 through IL31RA. Cytoplasmic STAT3 represses macroautophagy by inhibiting EIF2AK2/PKR activity. Plays an important role in host defense in methicillin-resistant *S.aureus* lung infection by regulating the expression of the antimicrobial lectin REG3G (By similarity).

### **STAT3(S727) Antibody - References**

- Akira S.,et al.Cell 77:63-71(1994).
- Della Pietra L.,et al.Gene 213:119-124(1998).
- Feinstein E.,et al.Patent number EP2440214, 18-APR-2012.
- Ota T.,et al.Nat. Genet. 36:40-45(2004).
- Zody M.C.,et al.Nature 440:1045-1049(2006).