

**Phospho-HSPA1A/HSPA1B(Y41) Antibody**  
**Purified Rabbit Polyclonal Antibody (Pab)**  
**Catalog # AP22370a**

**Specification**

---

**Phospho-HSPA1A/HSPA1B(Y41) Antibody - Product Information**

Application	WB,E
Primary Accession	<a href="#">P0DMV8</a> , <a href="#">P0DMV9</a>
Other Accession	<a href="#">Q53FA3</a> , <a href="#">Q27975</a> , <a href="#">P0DMV8</a> , <a href="#">Q61696</a> , <a href="#">P0DMW0</a> , <a href="#">Q27965</a> , <a href="#">P0DMV9</a> , <a href="#">P17879</a> , <a href="#">Q6S4N2</a> , <a href="#">P0DMW1</a> , <a href="#">P0CB32</a> , <a href="#">P34931</a> , <a href="#">Q4R888</a> , <a href="#">P16627</a> , <a href="#">A5A8V7</a> , <a href="#">P55063</a> , <a href="#">P08106</a> , <a href="#">P02827</a> , <a href="#">P34933</a> , <a href="#">P54652</a> , <a href="#">P17156</a> , <a href="#">P14659</a> , <a href="#">P09435</a> , <a href="#">P22202</a> , <a href="#">P17066</a> , <a href="#">Q04967</a> , <a href="#">P48741</a> , <a href="#">P09446</a> , <a href="#">P19120</a> , <a href="#">Q73885</a> , <a href="#">P19378</a> , <a href="#">Q90473</a>
Reactivity Predicted	<b>Human</b> <b>Bovine, Mouse, Rat, Pig, Monkey,</b> <b>C.Elegans, Chicken, Xenopus, Yeast,</b> <b>Hamster, Zebrafish, Horse, Drosophila</b>
Host	<b>Rabbit</b>
Clonality	<b>polyclonal</b>
Isotype	<b>Rabbit IgG</b>

**Phospho-HSPA1A/HSPA1B(Y41) Antibody - Additional Information**

**Other Names**

Heat shock 70 kDa protein 1A/1B, Heat shock 70 kDa protein 1/2, HSP70-1/HSP70-2, HSP70.1/HSP70.2, HSPA1A, HSPA1, HSX70

**Target/Specificity**

This HSPA1A/HSPA1B antibody is generated from a rabbit immunized with a KLH conjugated synthetic peptide between amino acids 30-50 from the human region of human HSPA1A/HSPA1B.

**Dilution**

WB~~1:500

**Format**

Purified polyclonal antibody supplied in PBS with 0.09% (W/V) sodium azide. This antibody is purified through a protein A column, followed by peptide affinity purification.

**Storage**

Maintain refrigerated at 2-8°C for up to 2 weeks. For long term storage store at -20°C in small aliquots to prevent freeze-thaw cycles.

**Precautions**

Phospho-HSPA1A/HSPA1B(Y41) Antibody is for research use only and not for use in diagnostic or therapeutic procedures.

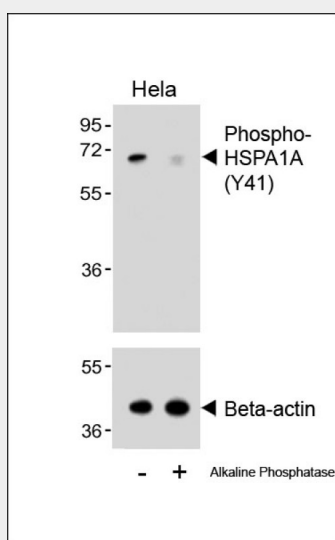
**Phospho-HSPA1A/HSPA1B(Y41) Antibody - Protein Information**

## Phospho-HSPA1A/HSPA1B(Y41) Antibody - Protocols

Provided below are standard protocols that you may find useful for product applications.

- [Western Blot](#)
- [Blocking Peptides](#)
- [Dot Blot](#)
- [Immunohistochemistry](#)
- [Immunofluorescence](#)
- [Immunoprecipitation](#)
- [Flow Cytometry](#)
- [Cell Culture](#)

## Phospho-HSPA1A/HSPA1B(Y41) Antibody - Images



Western blot analysis of lysates from HeLa cell line, untreated or treated with Alkaline phosphatase, 1 hours, using 458828101(Cat. #AP22370a)(upper) or Beta-actin (lower).

## Phospho-HSPA1A/HSPA1B(Y41) Antibody - Background

In cooperation with other chaperones, Hsp70s stabilize preexistent proteins against aggregation and mediate the folding of newly translated polypeptides in the cytosol as well as within organelles. These chaperones participate in all these processes through their ability to recognize nonnative conformations of other proteins. They bind extended peptide segments with a net hydrophobic character exposed by polypeptides during translation and membrane translocation, or following stress-induced damage. In case of rotavirus A infection, serves as a post-attachment receptor for the virus to facilitate entry into the cell.

## Phospho-HSPA1A/HSPA1B(Y41) Antibody - References

- Milner C.M., et al. Immunogenetics 32:242-251(1990).  
Hunt C., et al. Proc. Natl. Acad. Sci. U.S.A. 82:6455-6459(1985).  
Xie T., et al. Genome Res. 13:2621-2636(2003).  
Shiina S., et al. Submitted (SEP-1999) to the EMBL/GenBank/DDBJ databases.  
Ota T., et al. Nat. Genet. 36:40-45(2004).