

DLL4 Antibody
Purified Rabbit Polyclonal Antibody (Pab)
Catalog # AP22346a

Specification

DLL4 Antibody - Product Information

Application	WB,E
Primary Accession	O9NR61
Reactivity	Mouse, Rat
Predicted	Human
Host	Rabbit
Clonality	polyclonal
Isotype	Rabbit IgG
Calculated MW	74605

DLL4 Antibody - Additional Information

Gene ID 54567

Other Names

Delta-like protein 4, Drosophila Delta homolog 4, Delta4, DLL4

Target/Specificity

This DLL4 antibody is generated from a rabbit immunized with a recombinant protein from the human region of human DLL4.

Dilution

WB~~1:2000

Format

Purified polyclonal antibody supplied in PBS with 0.09% (W/V) sodium azide. This antibody is purified through a protein A column, followed by peptide affinity purification.

Storage

Maintain refrigerated at 2-8°C for up to 2 weeks. For long term storage store at -20°C in small aliquots to prevent freeze-thaw cycles.

Precautions

DLL4 Antibody is for research use only and not for use in diagnostic or therapeutic procedures.

DLL4 Antibody - Protein Information

Name DLL4

Function Involved in the Notch signaling pathway as Notch ligand (PubMed:[11134954](#)). Activates NOTCH1 and NOTCH4. Involved in angiogenesis; negatively regulates endothelial cell proliferation and migration and angiogenic sprouting (PubMed:[20616313](#)). Essential for retinal progenitor proliferation. Required for suppressing rod fates in late retinal progenitors as well as for proper

generation of other retinal cell types (By similarity). During spinal cord neurogenesis, inhibits V2a interneuron fate (PubMed:[17728344](#)).

Cellular Location

Cell membrane; Single-pass type I membrane protein

Tissue Location

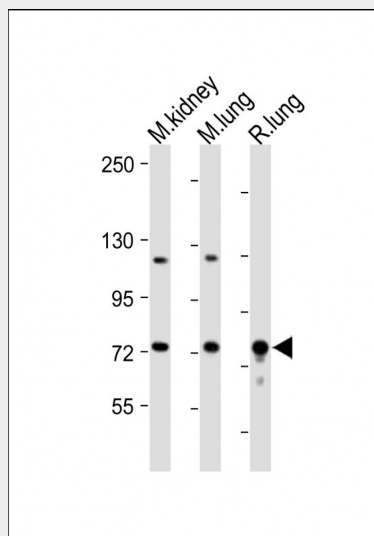
Expressed in vascular endothelium.

DLL4 Antibody - Protocols

Provided below are standard protocols that you may find useful for product applications.

- [Western Blot](#)
- [Blocking Peptides](#)
- [Dot Blot](#)
- [Immunohistochemistry](#)
- [Immunofluorescence](#)
- [Immunoprecipitation](#)
- [Flow Cytometry](#)
- [Cell Culture](#)

DLL4 Antibody - Images



All lanes : Anti-DLL4 Antibody at 1:2000 dilution Lane 1: Mouse kidney lysate Lane 2: Mouse lung lysate Lane 3: Rat lung lysate Lysates/proteins at 20 μ g per lane. Secondary Goat Anti-Rabbit IgG, (H+L), Peroxidase conjugated at 1/10000 dilution. Predicted band size : 75 kDa Blocking/Dilution buffer: 5% NFDM/TBST.

DLL4 Antibody - Background

Involved in the Notch signaling pathway as Notch ligand. Activates NOTCH1 and NOTCH4. Involved in angiogenesis; negatively regulates endothelial cell proliferation and migration and angiogenic sprouting. Essential for retinal progenitor proliferation is required for suppressing rod fates in late retinal progenitors as well as for proper generation of other retinal cell types. During spinal cord neurogenesis, inhibits V2a interneuron fate.

DLL4 Antibody - References

- Shutter J.R.,et al.Genes Dev. 14:1313-1318(2000).
Sakano S.,et al.Submitted (JAN-2000) to the EMBL/GenBank/DDBJ databases.
Yoneya T.,et al.J. Biochem. 129:27-34(2001).
Clark H.F.,et al.Genome Res. 13:2265-2270(2003).
Zhang Z.,et al.Protein Sci. 13:2819-2824(2004).