

BRAF V600E Antibody(C-Term)
Purified Rabbit Polyclonal Antibody (Pab)
Catalog # AP22342b**Specification**

BRAF V600E Antibody(C-Term) - Product Information

Application	WB, IHC-P,E
Primary Accession	P15056
Other Accession	Q04982 , P34908 , P28028 , P00531 , A7E3S4 , P05625 , P04049 , Q99N57 , Q5R5M7 , P11345 , P00532 , P27966 , P10533
Reactivity	Human
Predicted	Mouse, Rat, Chicken, Bovine
Host	Rabbit
Clonality	polyclonal
Isotype	Rabbit IgG

BRAF V600E Antibody(C-Term) - Additional Information**Gene ID** 673**Other Names**

Serine/threonine-protein kinase B-raf, 2.7.11.1, Proto-oncogene B-Raf, p94, v-Raf murine sarcoma viral oncogene homolog B1, BRAF, BRAF1, RAFB1

Target/Specificity

This antibody is generated from a rabbit immunized with a KLH conjugated synthetic peptide between 576-606 amino acids from human.

Dilution

WB~~1:2000

IHC-P~~1:25

Format

Purified polyclonal antibody supplied in PBS with 0.09% (W/V) sodium azide. This antibody is purified through a protein A column, followed by peptide affinity purification.

Storage

Maintain refrigerated at 2-8°C for up to 2 weeks. For long term storage store at -20°C in small aliquots to prevent freeze-thaw cycles.

Precautions

BRAF V600E Antibody(C-Term) is for research use only and not for use in diagnostic or therapeutic procedures.

BRAF V600E Antibody(C-Term) - Protein Information**Name** BRAF ([HGNC:1097](#))

Synonyms BRAF1, RAFB1

Function Protein kinase involved in the transduction of mitogenic signals from the cell membrane to the nucleus (Probable). Phosphorylates MAP2K1, and thereby activates the MAP kinase signal transduction pathway (PubMed:[21441910](#), PubMed:[29433126](#)). Phosphorylates PFKFB2 (PubMed:[36402789](#)). May play a role in the postsynaptic responses of hippocampal neurons (PubMed:[1508179](#)).

Cellular Location

Nucleus. Cytoplasm. Cell membrane. Note=Colocalizes with RGS14 and RAF1 in both the cytoplasm and membranes.

Tissue Location

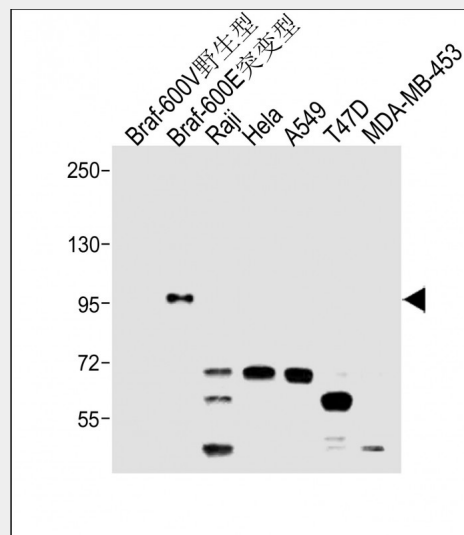
Brain and testis.

BRAF V600E Antibody(C-Term) - Protocols

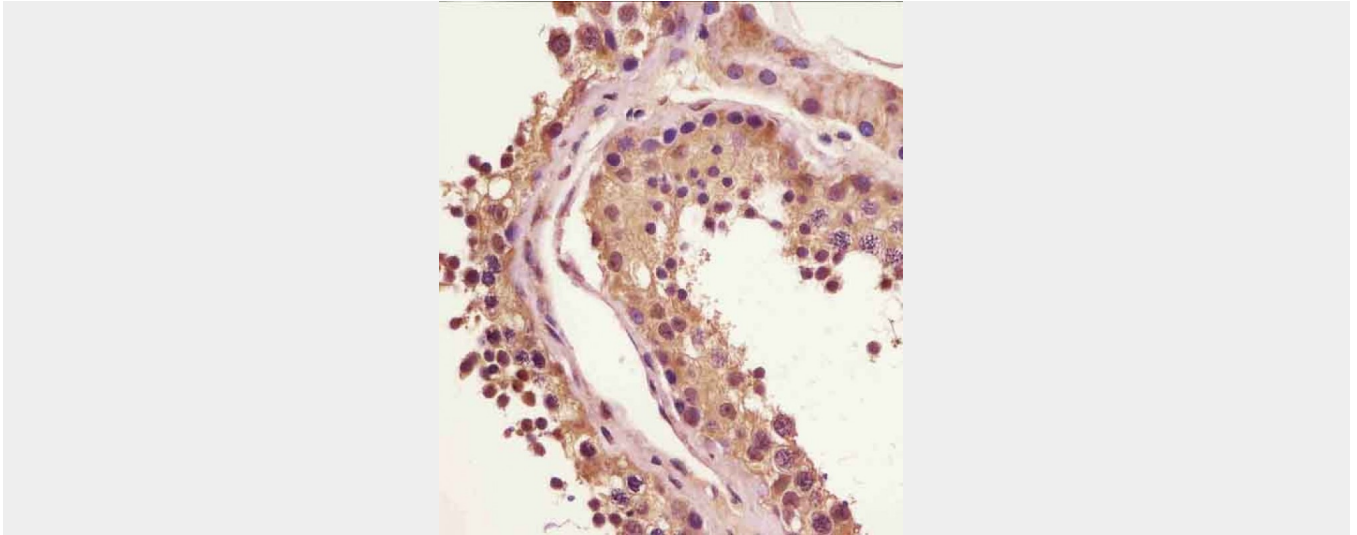
Provided below are standard protocols that you may find useful for product applications.

- [Western Blot](#)
- [Blocking Peptides](#)
- [Dot Blot](#)
- [Immunohistochemistry](#)
- [Immunofluorescence](#)
- [Immunoprecipitation](#)
- [Flow Cytometry](#)
- [Cell Culture](#)

BRAF V600E Antibody(C-Term) - Images



All lanes : Anti-BRAF Antibody(C-Term) at 1:2000 dilution Lane 1: Braf-600V -wild type Lane 2: Braf-600E -mutation Lane 3: Raji whole cell lysate Lane 4: Hela whole cell lysate Lane 5: A549 whole cell lysate Lane 6: T47D whole cell lysate Lane 7: MDA-MB-453 whole cell lysate Lysates/proteins at 10 µg per lane. Secondary Goat Anti-Rabbit IgG, (H+L), Peroxidase conjugated at 1/10000 dilution. Predicted band size : 84 kDa Blocking/Dilution buffer: 5% NFDM/TBST.



AP22342b staining BRAF in human testis tissue sections by Immunohistochemistry (IHC-P - paraformaldehyde-fixed, paraffin-embedded sections). Tissue was fixed with formaldehyde and blocked with 3% BSA for 0.5 hour at room temperature; antigen retrieval was by heat mediation with a citrate buffer (pH6). Samples were incubated with primary antibody (1/25) for 1 hour at 37°C. A undiluted biotinylated goat polyvalent antibody was used as the secondary antibody.

BRAF V600E Antibody(C-Term) - Background

Protein kinase involved in the transduction of mitogenic signals from the cell membrane to the nucleus. May play a role in the postsynaptic responses of hippocampal neuron. Phosphorylates MAP2K1, and thereby contributes to the MAP kinase signal transduction pathway.

BRAF V600E Antibody(C-Term) - References

Stephens R.M., et al. *Mol. Cell. Biol.* 12:3733-3742(1992).
Albert S., et al. Submitted (JAN-2004) to the EMBL/GenBank/DDBJ databases.
Scherer S.W., et al. *Science* 300:767-772(2003).
Hillier L.W., et al. *Nature* 424:157-164(2003).
Eychene A., et al. *Oncogene* 7:1657-1660(1992).