

**NEFH Antibody (Center)**  
**Purified Rabbit Polyclonal Antibody (Pab)**  
**Catalog # AP22341c**

**Specification**

---

**NEFH Antibody (Center) - Product Information**

Application	<b>WB,E</b>
Primary Accession	<a href="#">P12036</a>
Reactivity	<b>Human, Mouse</b>
Host	<b>Rabbit</b>
Clonality	<b>polyclonal</b>
Isotype	<b>Rabbit IgG</b>

**NEFH Antibody (Center) - Additional Information**

**Gene ID** 4744

**Other Names**

Neurofilament heavy polypeptide, NF-H, 200 kDa neurofilament protein, Neurofilament triplet H protein, NEFH, KIAA0845, NFH

**Target/Specificity**

This NEFH antibody is generated from a rabbit immunized with a KLH conjugated synthetic peptide between 328-362 amino acids of human NEFH.

**Dilution**

WB~~1:500-1:2000

**Format**

Purified polyclonal antibody supplied in PBS with 0.09% (W/V) sodium azide. This antibody is purified through a protein A column, followed by peptide affinity purification.

**Storage**

Maintain refrigerated at 2-8°C for up to 2 weeks. For long term storage store at -20°C in small aliquots to prevent freeze-thaw cycles.

**Precautions**

NEFH Antibody (Center) is for research use only and not for use in diagnostic or therapeutic procedures.

**NEFH Antibody (Center) - Protein Information**

**Name** NEFH

**Synonyms** KIAA0845, NFH

**Function** Neurofilaments usually contain three intermediate filament proteins: NEFL, NEFM, and NEFH which are involved in the maintenance of neuronal caliber. NEFH has an important function

in mature axons that is not subserved by the two smaller NF proteins. May additionally cooperate with the neuronal intermediate filament proteins PRPH and INA to form neuronal filamentous networks (By similarity).

#### Cellular Location

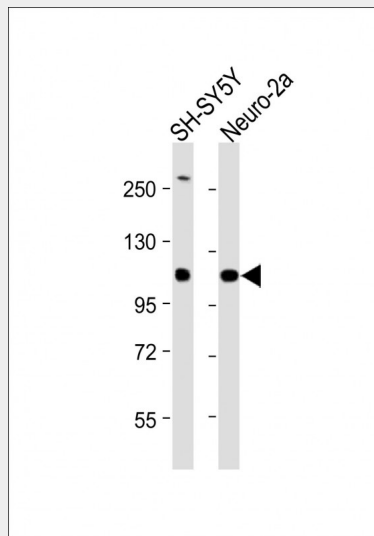
Cytoplasm, cytoskeleton. Cell projection, axon {ECO:0000250|UniProtKB:P19246}

#### NEFH Antibody (Center) - Protocols

Provided below are standard protocols that you may find useful for product applications.

- [Western Blot](#)
- [Blocking Peptides](#)
- [Dot Blot](#)
- [Immunohistochemistry](#)
- [Immunofluorescence](#)
- [Immunoprecipitation](#)
- [Flow Cytometry](#)
- [Cell Culture](#)

#### NEFH Antibody (Center) - Images



All lanes : Anti-NEFH Antibody (Center) at 1:500-1:2000 dilution Lane 1: SH-SY5Y whole cell lysate Lane 2: Neuro-2a whole cell lysate Lysates/proteins at 20 µg per lane. Secondary Goat Anti-Rabbit IgG, (H+L), Peroxidase conjugated at 1/10000 dilution. Predicted band size : 112 kDa Blocking/Dilution buffer: 5% NFDm/TBST.

#### NEFH Antibody (Center) - Background

Neurofilaments usually contain three intermediate filament proteins: L, M, and H which are involved in the maintenance of neuronal caliber. NF-H has an important function in mature axons that is not subserved by the two smaller NF proteins.

#### NEFH Antibody (Center) - References

Lees J.F., et al. EMBO J. 7:1947-1955(1988).  
Zhu Y., et al. Beijing Yi Ke Da Xue Xue Bao 31:531-531(1999).

Nagase T.,et al.DNA Res. 5:355-364(1998).  
Ota T.,et al.Nat. Genet. 36:40-45(2004).  
Dunham I.,et al.Nature 402:489-495(1999).