

MYL1 Antibody (N-Term)
Purified Rabbit Polyclonal Antibody (Pab)
Catalog # AP22324a

Specification

MYL1 Antibody (N-Term) - Product Information

Application	WB, IHC-P,E
Primary Accession	P05976
Other Accession	P02602
Reactivity	Human, Rat
Host	Rabbit
Clonality	polyclonal
Isotype	Rabbit IgG
Calculated MW	21145

MYL1 Antibody (N-Term) - Additional Information

Gene ID 4632

Other Names

Myosin light chain 1/3, skeletal muscle isoform, MLC1/MLC3, MLC1F/MLC3F, Myosin light chain alkali 1/2, Myosin light chain A1/A2, MYL1

Target/Specificity

This MYL1 antibody is generated from a rabbit immunized with a KLH conjugated synthetic peptide between 24-58 amino acids from the human region of human MYL1.

Dilution

WB~~1:2000

IHC-P~~1:25

Format

Purified polyclonal antibody supplied in PBS with 0.09% (W/V) sodium azide. This antibody is purified through a protein A column, followed by peptide affinity purification.

Storage

Maintain refrigerated at 2-8°C for up to 2 weeks. For long term storage store at -20°C in small aliquots to prevent freeze-thaw cycles.

Precautions

MYL1 Antibody (N-Term) is for research use only and not for use in diagnostic or therapeutic procedures.

MYL1 Antibody (N-Term) - Protein Information

Name MYL1

Function Non-regulatory myosin light chain required for proper formation and/or maintenance of

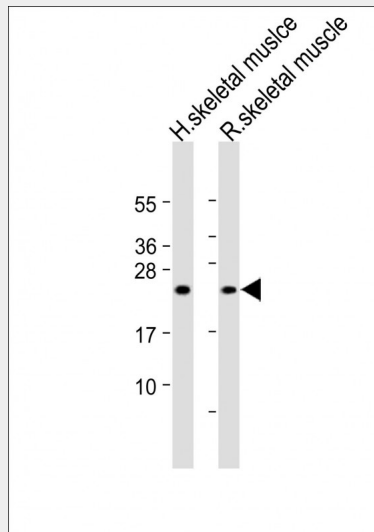
myofibers, and thus appropriate muscle function.

MYL1 Antibody (N-Term) - Protocols

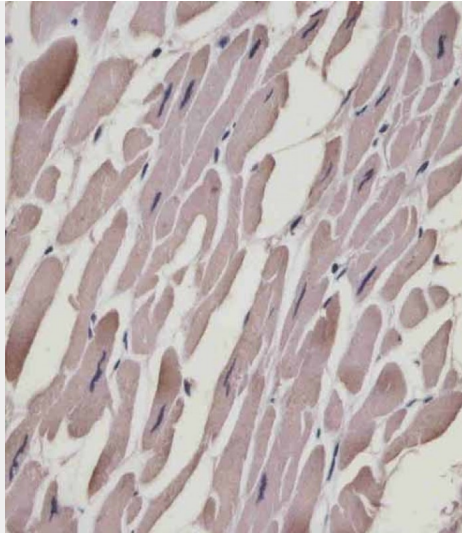
Provided below are standard protocols that you may find useful for product applications.

- [Western Blot](#)
- [Blocking Peptides](#)
- [Dot Blot](#)
- [Immunohistochemistry](#)
- [Immunofluorescence](#)
- [Immunoprecipitation](#)
- [Flow Cytometry](#)
- [Cell Culture](#)

MYL1 Antibody (N-Term) - Images



All lanes : Anti-MYL1 Antibody (N-Term) at 1:2000 dilution Lane 1: Human skeletal muscle lysate
Lane 2: Rat skeletal muscle lysate Lysates/proteins at 20 µg per lane. Secondary Goat Anti-Rabbit IgG, (H+L), Peroxidase conjugated at 1/10000 dilution. Predicted band size : 21 kDa
Blocking/Dilution buffer: 5% NFDM/TBST.



AP22324a staining MYL1 in human heart tissue sections by Immunohistochemistry (IHC-P - paraformaldehyde-fixed, paraffin-embedded sections). Tissue was fixed with formaldehyde and blocked with 3% BSA for 0.5 hour at room temperature; antigen retrieval was by heat mediation with a citrate buffer (pH6). Samples were incubated with primary antibody (1/25) for 1 hour at 37°C. A undiluted biotinylated goat polyvalent antibody was used as the secondary antibody.

MYL1 Antibody (N-Term) - Background

Regulatory light chain of myosin. Does not bind calcium.

MYL1 Antibody (N-Term) - References

- Seidel U., et al. *Nucleic Acids Res.* 15:4989-4989(1987).
- Seidel U., et al. *Gene* 66:135-146(1988).
- Ebert L., et al. Submitted (JUN-2004) to the EMBL/GenBank/DDBJ databases.
- Ota T., et al. *Nat. Genet.* 36:40-45(2004).
- Mural R.J., et al. Submitted (JUL-2005) to the EMBL/GenBank/DDBJ databases.