

CLEC1B Antibody (N-Term)
Purified Rabbit Polyclonal Antibody (Pab)
Catalog # AP22306a

Specification

CLEC1B Antibody (N-Term) - Product Information

Application	WB,E
Primary Accession	O9P126
Reactivity	Human
Host	Rabbit
Clonality	polyclonal
Isotype	Rabbit IgG
Calculated MW	26596

CLEC1B Antibody (N-Term) - Additional Information

Gene ID 51266

Other Names

C-type lectin domain family 1 member B, C-type lectin-like receptor 2, CLEC-2, CLEC1B, CLEC2

Target/Specificity

This CLEC1B antibody is generated from a rabbit immunized with a KLH conjugated synthetic peptide between 44-78 amino acids from the human region of human CLEC1B.

Dilution

WB~~1:2000

Format

Purified polyclonal antibody supplied in PBS with 0.09% (W/V) sodium azide. This antibody is purified through a protein A column, followed by peptide affinity purification.

Storage

Maintain refrigerated at 2-8°C for up to 2 weeks. For long term storage store at -20°C in small aliquots to prevent freeze-thaw cycles.

Precautions

CLEC1B Antibody (N-Term) is for research use only and not for use in diagnostic or therapeutic procedures.

CLEC1B Antibody (N-Term) - Protein Information

Name CLEC1B

Synonyms CLEC2

Function C-type lectin-like receptor that functions as a platelet receptor for the lymphatic endothelial marker, PDPN (PubMed:[18215137](#)). After ligand activation, signals via sequential

activation of SRC and SYK tyrosine kinases leading to activation of PLCG2 (PubMed:[18955485](#)).

Cellular Location

Membrane; Single-pass type II membrane protein

Tissue Location

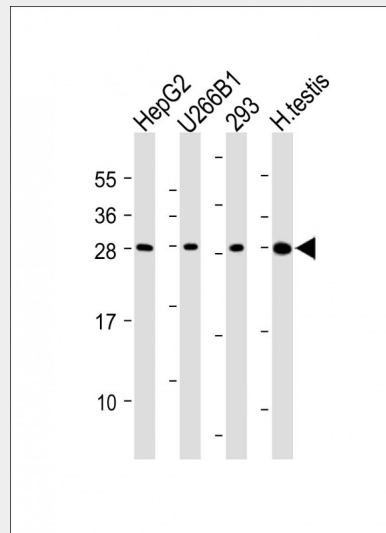
Expressed preferentially in the liver. Also expressed in immune cells of myeloid origin and on the surface of platelets.

CLEC1B Antibody (N-Term) - Protocols

Provided below are standard protocols that you may find useful for product applications.

- [Western Blot](#)
- [Blocking Peptides](#)
- [Dot Blot](#)
- [Immunohistochemistry](#)
- [Immunofluorescence](#)
- [Immunoprecipitation](#)
- [Flow Cytometry](#)
- [Cell Culture](#)

CLEC1B Antibody (N-Term) - Images



All lanes : Anti-CLEC1B Antibody (N-Term) at dilution Lane 1: HepG2 whole cell lysate Lane 2: U266B1 whole cell lysate Lane 3: 293 whole cell lysate Lane 4: Human testis lysate Lysates/proteins at 20 µg per lane. Secondary Goat Anti-Rabbit IgG, (H+L), Peroxidase conjugated at 1/10000 dilution. Predicted band size : 27kDa Blocking/Dilution buffer: 5% NFDM/TBST.

CLEC1B Antibody (N-Term) - References

- Colonna M.,et al.Eur. J. Immunol. 30:697-704(2000).
Chaipan C.,et al.J. Virol. 80:8951-8960(2006).
Clark H.F.,et al.Genome Res. 13:2265-2270(2003).
Scherer S.E.,et al.Nature 440:346-351(2006).
Suzuki-Inoue K.,et al.Blood 107:542-549(2006).