

STK25 Antibody
Purified Rabbit Polyclonal Antibody (Pab)
Catalog # AP22291a

Specification

STK25 Antibody - Product Information

Application	WB,E
Primary Accession	O00506
Reactivity	Human
Host	Rabbit
Clonality	polyclonal
Isotype	Rabbit IgG
Calculated MW	48112

STK25 Antibody - Additional Information

Gene ID 10494

Other Names

Serine/threonine-protein kinase 25, 2.7.11.1, Ste20-like kinase, Sterile 20/oxidant stress-response kinase 1, SOK-1, Ste20/oxidant stress response kinase 1, STK25, SOK1, YSK1

Target/Specificity

This STK25 antibody is generated from a rabbit immunized with a recombinant protein of human STK25.

Dilution

WB~~1:2000

Format

Purified polyclonal antibody supplied in PBS with 0.09% (W/V) sodium azide. This antibody is purified through a protein A column, followed by peptide affinity purification.

Storage

Maintain refrigerated at 2-8°C for up to 2 weeks. For long term storage store at -20°C in small aliquots to prevent freeze-thaw cycles.

Precautions

STK25 Antibody is for research use only and not for use in diagnostic or therapeutic procedures.

STK25 Antibody - Protein Information

Name STK25 ([HGNC:11404](#))

Synonyms SOK1, YSK1

Function Oxidant stress-activated serine/threonine kinase that may play a role in the response to environmental stress. Targets to the Golgi apparatus where it appears to regulate protein

transport events, cell adhesion, and polarity complexes important for cell migration. Part of the striatin-interacting phosphatase and kinase (STRIPAK) complexes. STRIPAK complexes have critical roles in protein (de)phosphorylation and are regulators of multiple signaling pathways including Hippo, MAPK, nuclear receptor and cytoskeleton remodeling. Different types of STRIPAK complexes are involved in a variety of biological processes such as cell growth, differentiation, apoptosis, metabolism and immune regulation (PubMed:[18782753](#)).

Cellular Location

Cytoplasm. Golgi apparatus. Note=Localizes to the Golgi apparatus

Tissue Location

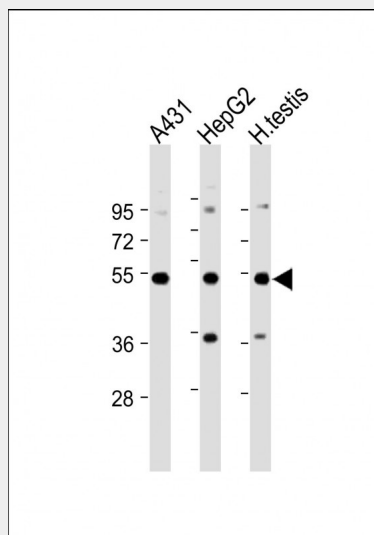
Ubiquitously expressed. Highest levels are found in testis, large intestine, brain and stomach followed by heart and lung

STK25 Antibody - Protocols

Provided below are standard protocols that you may find useful for product applications.

- [Western Blot](#)
- [Blocking Peptides](#)
- [Dot Blot](#)
- [Immunohistochemistry](#)
- [Immunofluorescence](#)
- [Immunoprecipitation](#)
- [Flow Cytometry](#)
- [Cell Culture](#)

STK25 Antibody - Images



All lanes : Anti-STK25 Antibody at 1:2000 dilution Lane 1: A431 whole cell lysate Lane 2: HepG2 whole cell lysate Lane 3: Human testis lysate Lysates/proteins at 20 µg per lane. Secondary Goat Anti-Rabbit IgG, (H+L), Peroxidase conjugated at 1/10000 dilution. Predicted band size : 48 kDa Blocking/Dilution buffer: 5% NFDM/TBST.

STK25 Antibody - Background

Oxidant stress-activated serine/threonine kinase that may play a role in the response to

environmental stress. Targets to the Golgi apparatus where it appears to regulate protein transport events, cell adhesion, and polarity complexes important for cell migration.

STK25 Antibody - References

Pombo C.M.,et al.EMBO J. 15:4537-4546(1996).

Osada S.,et al.Oncogene 14:2047-2057(1997).

Kalnine N.,et al.Submitted (OCT-2004) to the EMBL/GenBank/DDBJ databases.

Ota T.,et al.Nat. Genet. 36:40-45(2004).

Hillier L.W.,et al.Nature 434:724-731(2005).