

**TOMM40 Antibody (N-Term)**  
**Purified Rabbit Polyclonal Antibody (Pab)**  
**Catalog # AP22253a**

**Specification**

---

**TOMM40 Antibody (N-Term) - Product Information**

Application	<b>IF, WB, FC,E</b>
Primary Accession	<a href="#">O96008</a>
Reactivity	<b>Human</b>
Host	<b>Rabbit</b>
Clonality	<b>polyclonal</b>
Isotype	<b>Rabbit IgG</b>
Calculated MW	<b>37893</b>

**TOMM40 Antibody (N-Term) - Additional Information**

**Gene ID** 10452

**Other Names**

Mitochondrial import receptor subunit TOM40 homolog, Protein Haymaker, Translocase of outer membrane 40 kDa subunit homolog, p38.5, TOMM40, C19orf1, PEREC1, TOM40

**Target/Specificity**

This TOMM40 antibody is generated from a rabbit immunized with a KLH conjugated synthetic peptide between 22-56 amino acids from human TOMM40.

**Dilution**

IF~~1:25  
WB~~1:2000  
FC~~1:25

**Format**

Purified polyclonal antibody supplied in PBS with 0.09% (W/V) sodium azide. This antibody is purified through a protein A column, followed by peptide affinity purification.

**Storage**

Maintain refrigerated at 2-8°C for up to 2 weeks. For long term storage store at -20°C in small aliquots to prevent freeze-thaw cycles.

**Precautions**

TOMM40 Antibody (N-Term) is for research use only and not for use in diagnostic or therapeutic procedures.

**TOMM40 Antibody (N-Term) - Protein Information**

**Name** TOMM40

**Synonyms** C19orf1, PEREC1, TOM40

**Function** Channel-forming protein essential for import of protein precursors into mitochondria (PubMed:[15644312](#), PubMed:[31206022](#)). Plays a role in the assembly of the mitochondrial membrane respiratory chain NADH dehydrogenase (Complex I) by forming a complex with BCAP31 and mediating the translocation of Complex I components from the cytosol to the mitochondria (PubMed:[31206022](#)).

#### **Cellular Location**

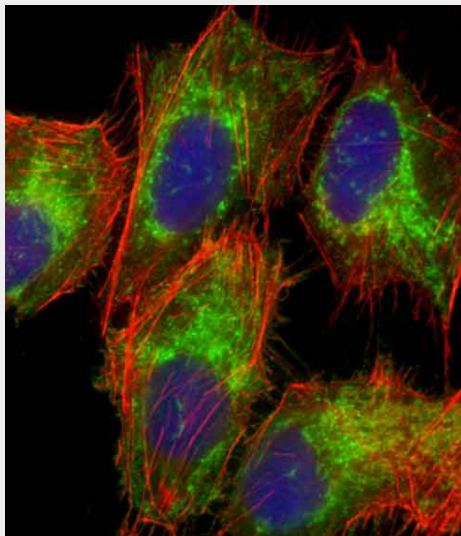
Mitochondrion outer membrane; Multi-pass membrane protein. Note=Associates with the mitochondria- associated ER membrane via interaction with BCAP31

#### **TOMM40 Antibody (N-Term) - Protocols**

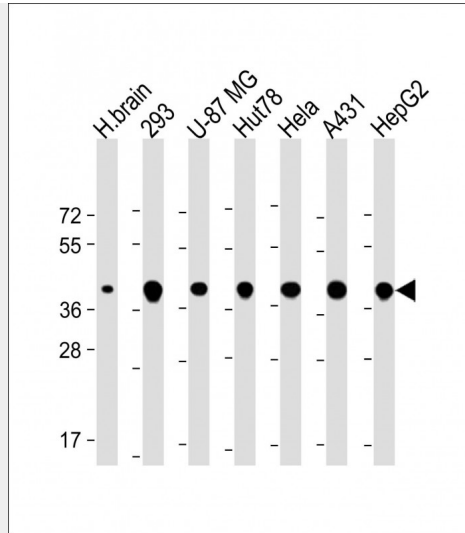
Provided below are standard protocols that you may find useful for product applications.

- [Western Blot](#)
- [Blocking Peptides](#)
- [Dot Blot](#)
- [Immunohistochemistry](#)
- [Immunofluorescence](#)
- [Immunoprecipitation](#)
- [Flow Cytometry](#)
- [Cell Culture](#)

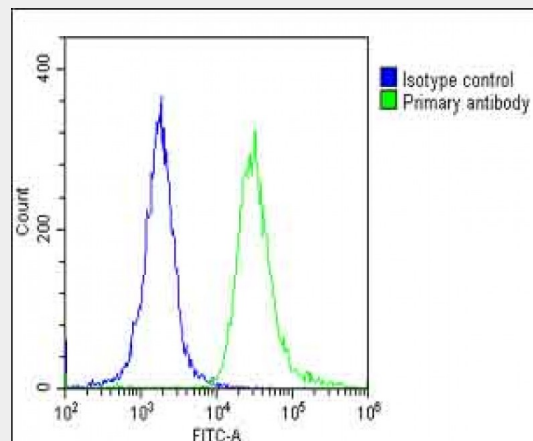
#### **TOMM40 Antibody (N-Term) - Images**



Immunofluorescent analysis of 4% paraformaldehyde-fixed, 0.1% Triton X-100 permeabilized U-2 OS (human osteosarcoma cell line) cells labeling TOMM40 with AP22253a at 1/25 dilution, followed by Dylight® 488-conjugated goat anti-rabbit IgG (1583138) secondary antibody at 1/200 dilution (green). Immunofluorescence image showing mitochondrion staining on U-2 OS cell line. Cytoplasmic actin is detected with Dylight® 554 Phalloidin (PD18466410) at 1/100 dilution (red).The nuclear counter stain is DAPI (blue).



All lanes : Anti-TOMM40 Antibody (N-Term) at 1:2000 dilution Lane 1: Human brain lysate Lane 2: 293 whole cell lysate Lane 3: U-87 MG whole cell lysate Lane 4: Hut78 whole cell lysate Lane 5: HeLa whole cell lysate Lane 6: A431 whole cell lysate Lane 7: HepG2 whole cell lysate Lysates/proteins at 20 µg per lane. Secondary Goat Anti-Rabbit IgG, (H+L), Peroxidase conjugated at 1/10000 dilution. Predicted band size : 38 kDa Blocking/Dilution buffer: 5% NFDM/TBST.



Overlay histogram showing HeLa cells stained with AP22253a(green line). The cells were fixed with 2% paraformaldehyde (10 min) and then permeabilized with 90% methanol for 10 min. The cells were then incubated in 2% bovine serum albumin to block non-specific protein-protein interactions followed by the antibody (AP22253a, 1:25 dilution) for 60 min at 37°C. The secondary antibody used was Goat-Anti-Rabbit IgG, DyLight® 488 Conjugated Highly Cross-Adsorbed(1583138) at 1/200 dilution for 40 min at 37°C. Isotype control antibody (blue line) was rabbit IgG1 (1µg/1x10<sup>6</sup> cells) used under the same conditions. Acquisition of >10, 000 events was performed.

### **TOMM40 Antibody (N-Term) - Background**

Channel-forming protein essential for import of protein precursors into mitochondria.

### **TOMM40 Antibody (N-Term) - References**

- Freitas E.M.,et al.DNA Seq. 9:89-100(1998).
- Yoshiura K.,et al.Submitted (JAN-1998) to the EMBL/GenBank/DDBJ databases.
- Das B.,et al.Int. J. Cancer 94:800-806(2001).
- Lubec G.,et al.Submitted (MAR-2007) to UniProtKB.

Johnston A.J., et al. J. Biol. Chem. 277:42197-42204(2002).