

CTBS Antibody (Center)
Purified Rabbit Polyclonal Antibody (Pab)
Catalog # AP22194c

Specification

CTBS Antibody (Center) - Product Information

Application	WB,E
Primary Accession	O01459
Reactivity	Human, Mouse
Host	Rabbit
Clonality	polyclonal
Isotype	Rabbit IgG
Calculated MW	43760

CTBS Antibody (Center) - Additional Information

Gene ID 1486

Other Names

Di-N-acetylchitobiase, 3.2.1.-, CTBS, CTB

Target/Specificity

This CTBS antibody is generated from a rabbit immunized with a KLH conjugated synthetic peptide between 141-172 amino acids from the Central region of human CTBS.

Dilution

WB~~1:2000

Format

Purified polyclonal antibody supplied in PBS with 0.09% (W/V) sodium azide. This antibody is purified through a protein A column, followed by peptide affinity purification.

Storage

Maintain refrigerated at 2-8°C for up to 2 weeks. For long term storage store at -20°C in small aliquots to prevent freeze-thaw cycles.

Precautions

CTBS Antibody (Center) is for research use only and not for use in diagnostic or therapeutic procedures.

CTBS Antibody (Center) - Protein Information

Name CTBS

Synonyms CTB

Function Involved in the degradation of asparagine-linked glycoproteins. Hydrolyze of N-acetyl-beta-D-glucosamine (1-4)N- acetylglucosamine chitobiose core from the reducing end of

the bond, it requires prior cleavage by glycosylasparaginase.

Cellular Location

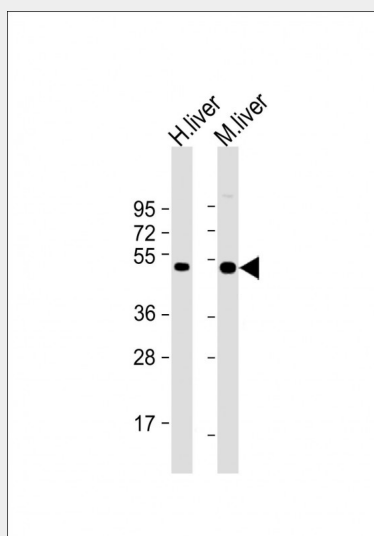
Lysosome.

CTBS Antibody (Center) - Protocols

Provided below are standard protocols that you may find useful for product applications.

- [Western Blot](#)
- [Blocking Peptides](#)
- [Dot Blot](#)
- [Immunohistochemistry](#)
- [Immunofluorescence](#)
- [Immunoprecipitation](#)
- [Flow Cytometry](#)
- [Cell Culture](#)

CTBS Antibody (Center) - Images



All lanes : Anti-CTBS Antibody (Center) at 1:2000 dilution Lane 1: human liver lysate Lane 2: mouse liver lysate Lysates/proteins at 20 μ g per lane. Secondary Goat Anti-Rabbit IgG, (H+L), Peroxidase conjugated at 1/10000 dilution. Predicted band size : 44 kDa Blocking/Dilution buffer: 5% NFD/MTBST.

CTBS Antibody (Center) - Background

Involved in the degradation of asparagine-linked glycoproteins. Hydrolyze of N-acetyl-beta-D-glucosamine (1-4)N- acetylglucosamine chitobiose core from the reducing end of the bond, it requires prior cleavage by glycosylasparaginase.

CTBS Antibody (Center) - References

- Fisher K.J.,et al.J. Biol. Chem. 267:19607-19616(1992).
Liu B.,et al.Glycobiology 9:589-593(1999).
Gregory S.G.,et al.Nature 441:315-321(2006).
Mural R.J.,et al.Submitted (SEP-2005) to the EMBL/GenBank/DDBJ databases.

Chen R., et al. J. Proteome Res. 8:651-661(2009).