

ARF4 Antibody (Center)
Purified Rabbit Polyclonal Antibody (Pab)
Catalog # AP22186c**Specification**

ARF4 Antibody (Center) - Product Information

| | |
|-------------------|------------------------|
| Application | WB,E |
| Primary Accession | P18085 |
| Other Accession | Q5RCF1 |
| Reactivity | Human |
| Host | Rabbit |
| Clonality | polyclonal |
| Isotype | Rabbit IgG |
| Calculated MW | 20511 |

ARF4 Antibody (Center) - Additional Information**Gene ID** 378**Other Names**

ADP-ribosylation factor 4, ARF4, ARF2

Target/Specificity

This ARF4 antibody is generated from a rabbit immunized with a KLH conjugated synthetic peptide between 72-106 amino acids from the Central region of human ARF4.

Dilution

WB~~1:2000

Format

Purified polyclonal antibody supplied in PBS with 0.09% (W/V) sodium azide. This antibody is purified through a protein A column, followed by peptide affinity purification.

Storage

Maintain refrigerated at 2-8°C for up to 2 weeks. For long term storage store at -20°C in small aliquots to prevent freeze-thaw cycles.

Precautions

ARF4 Antibody (Center) is for research use only and not for use in diagnostic or therapeutic procedures.

ARF4 Antibody (Center) - Protein Information**Name** ARF4**Synonyms** ARF2**Function** GTP-binding protein that functions as an allosteric activator of the cholera toxin catalytic

subunit, an ADP-ribosyltransferase. Involved in protein trafficking; may modulate vesicle budding and uncoating within the Golgi apparatus. Part of the ciliary targeting complex containing Rab11, ASAP1, Rabin8/RAB3IP, RAB11FIP3 and ARF4, which direct preciliary vesicle trafficking to mother centriole and ciliogenesis initiation (PubMed:[25673879](#)).

Cellular Location

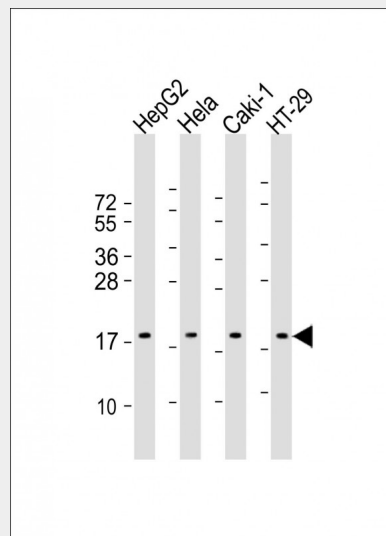
Golgi apparatus. Membrane; Lipid-anchor

ARF4 Antibody (Center) - Protocols

Provided below are standard protocols that you may find useful for product applications.

- [Western Blot](#)
- [Blocking Peptides](#)
- [Dot Blot](#)
- [Immunohistochemistry](#)
- [Immunofluorescence](#)
- [Immunoprecipitation](#)
- [Flow Cytometry](#)
- [Cell Culture](#)

ARF4 Antibody (Center) - Images



All lanes : Anti-ARF4 Antibody (Center) at 1:2000 dilution Lane 1: HepG2 whole cell lysate Lane 2: HeLa whole cell lysate Lane 3: Caki-1 whole cell lysate Lane 4: HT-29 whole cell lysate Lysates/proteins at 20 µg per lane. Secondary Goat Anti-Rabbit IgG, (H+L), Peroxidase conjugated at 1/10000 dilution. Predicted band size : 21 kDa Blocking/Dilution buffer: 5% NFDN/TBST.

ARF4 Antibody (Center) - Background

GTP-binding protein that functions as an allosteric activator of the cholera toxin catalytic subunit, an ADP- ribosyltransferase. Involved in protein trafficking; may modulate vesicle budding and uncoating within the Golgi apparatus.

ARF4 Antibody (Center) - References

Monaco L.,et al.Proc. Natl. Acad. Sci. U.S.A. 87:2206-2210(1990).

Kahn R.A., et al. J. Biol. Chem. 266:2606-2614(1991).
Lebeda R.A., et al. Gene 237:209-214(1999).
Puhl H.L. III, et al. Submitted (MAR-2002) to the EMBL/GenBank/DDBJ databases.
Ota T., et al. Nat. Genet. 36:40-45(2004).