

KIAA1524 Antibody (N-Term)
Purified Rabbit Polyclonal Antibody (Pab)
Catalog # AP22183a

Specification

KIAA1524 Antibody (N-Term) - Product Information

Application	WB,E
Primary Accession	O8TCG1 , O8BWY9
Other Accession	O8TCG1
Reactivity	Mouse
Predicted	Human
Host	Rabbit
Clonality	polyclonal
Isotype	Rabbit IgG
Antigen Region	269-301

KIAA1524 Antibody (N-Term) - Additional Information

Other Names

Protein CIP2A, Cancerous inhibitor of PP2A, p90 autoantigen, KIAA1524, CIP2A

Target/Specificity

This KIAA1524 antibody is generated from a rabbit immunized with a KLH conjugated synthetic peptide between 269-301 amino acids from human KIAA1524.

Dilution

WB~~1:2000

Format

Purified polyclonal antibody supplied in PBS with 0.09% (W/V) sodium azide. This antibody is purified through a protein A column, followed by peptide affinity purification.

Storage

Maintain refrigerated at 2-8°C for up to 2 weeks. For long term storage store at -20°C in small aliquots to prevent freeze-thaw cycles.

Precautions

KIAA1524 Antibody (N-Term) is for research use only and not for use in diagnostic or therapeutic procedures.

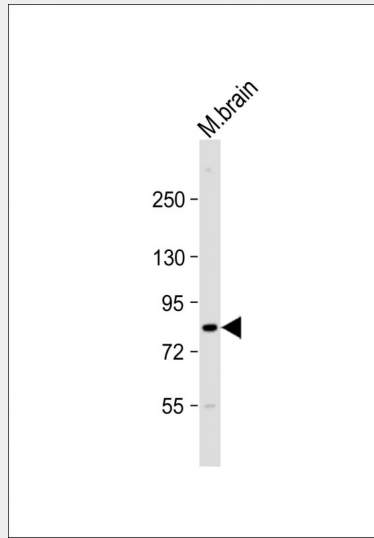
KIAA1524 Antibody (N-Term) - Protein Information

KIAA1524 Antibody (N-Term) - Protocols

Provided below are standard protocols that you may find useful for product applications.

- [Western Blot](#)
- [Blocking Peptides](#)
- [Dot Blot](#)
- [Immunohistochemistry](#)
- [Immunofluorescence](#)
- [Immunoprecipitation](#)
- [Flow Cytometry](#)
- [Cell Culture](#)

KIAA1524 Antibody (N-Term) - Images



Anti-KIAA1524 Antibody (N-Term) at 1:2000 dilution + mouse brain lysate Lysates/proteins at 20 µg per lane. Secondary Goat Anti-Rabbit IgG, (H+L), Peroxidase conjugated at 1/10000 dilution. Predicted band size : 102 kDa Blocking/Dilution buffer: 5% NFDM/TBST.

KIAA1524 Antibody (N-Term) - Background

Oncoprotein that inhibits PP2A and stabilizes MYC in human malignancies. Promotes anchorage-independent cell growth and tumor formation.

KIAA1524 Antibody (N-Term) - References

- Soo Hoo L., et al. *Oncogene* 21:5006-5015(2002).
Nagase T., et al. *DNA Res.* 7:143-150(2000).
Bechtel S., et al. *BMC Genomics* 8:399-399(2007).
Ota T., et al. *Nat. Genet.* 36:40-45(2004).
Shi F.D., et al. *Prostate* 63:252-258(2005).