

**PABPC3 Antibody (N-Term)**  
**Purified Rabbit Polyclonal Antibody (Pab)**  
**Catalog # AP22175a**

**Specification**

---

**PABPC3 Antibody (N-Term) - Product Information**

Application	<b>WB, IHC-P, FC,E</b>
Primary Accession	<a href="#">O9H361</a>
Reactivity	<b>Human</b>
Host	<b>Rabbit</b>
Clonality	<b>polyclonal</b>
Isotype	<b>Rabbit IgG</b>
Calculated MW	<b>70031</b>

**PABPC3 Antibody (N-Term) - Additional Information**

**Gene ID** 5042

**Other Names**

Polyadenylate-binding protein 3, PABP-3, Poly(A)-binding protein 3, Testis-specific poly(A)-binding protein, PABPC3, PABP3, PABPL3

**Target/Specificity**

This PABPC3 antibody is generated from a rabbit immunized with a KLH conjugated synthetic peptide between 84-117 amino acids from human PABPC3.

**Dilution**

WB~~1:2000

IHC-P~~1:25

FC~~1:25

**Format**

Purified polyclonal antibody supplied in PBS with 0.09% (W/V) sodium azide. This antibody is purified through a protein A column, followed by peptide affinity purification.

**Storage**

Maintain refrigerated at 2-8°C for up to 2 weeks. For long term storage store at -20°C in small aliquots to prevent freeze-thaw cycles.

**Precautions**

PABPC3 Antibody (N-Term) is for research use only and not for use in diagnostic or therapeutic procedures.

**PABPC3 Antibody (N-Term) - Protein Information**

**Name** PABPC3

**Synonyms** PABP3, PABPL3

**Function** Binds the poly(A) tail of mRNA. May be involved in cytoplasmic regulatory processes of mRNA metabolism. Binds poly(A) with a slightly lower affinity as compared to PABPC1.

**Cellular Location**

Cytoplasm.

**Tissue Location**

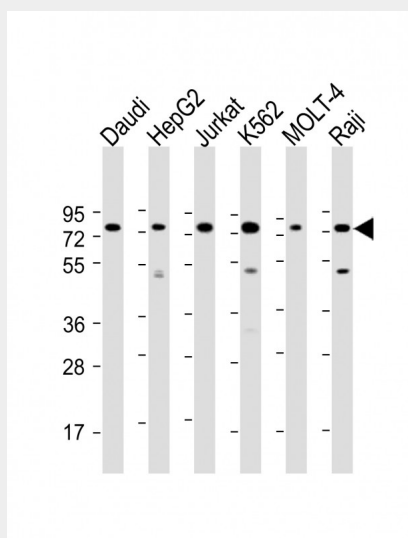
Testis specific..

**PABPC3 Antibody (N-Term) - Protocols**

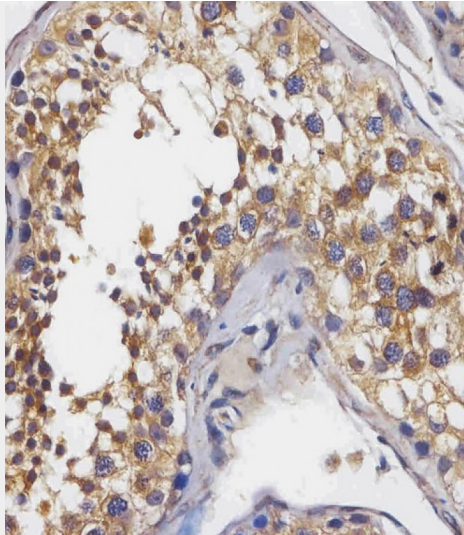
Provided below are standard protocols that you may find useful for product applications.

- [Western Blot](#)
- [Blocking Peptides](#)
- [Dot Blot](#)
- [Immunohistochemistry](#)
- [Immunofluorescence](#)
- [Immunoprecipitation](#)
- [Flow Cytometry](#)
- [Cell Culture](#)

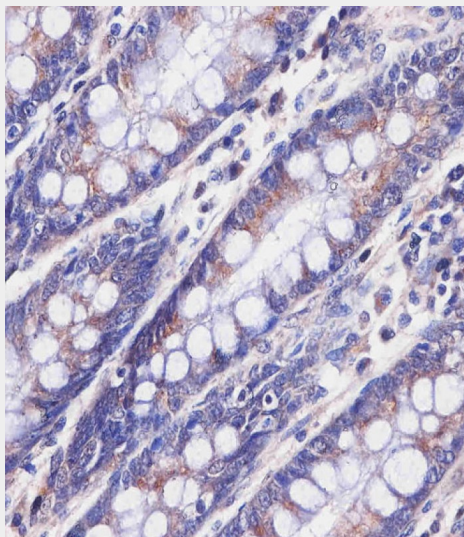
**PABPC3 Antibody (N-Term) - Images**



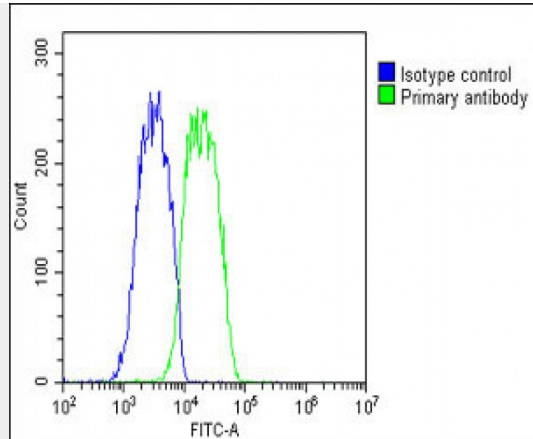
All lanes : Anti-PABPC3 Antibody (N-Term) at 1:2000 dilution Lane 1: Daudi whole cell lysate Lane 2: HepG2 whole cell lysate Lane 3: Jurkat whole cell lysate Lane 4: K562 whole cell lysate Lane 5: MOLT-4 whole cell lysate Lane 5: Raji whole cell lysate Lysates/proteins at 20 µg per lane. Secondary Goat Anti-Rabbit IgG, (H+L), Peroxidase conjugated at 1/10000 dilution. Predicted band size : 70 kDa Blocking/Dilution buffer: 5% NFDN/TBST.



AP22175a staining PABPC3 in human testis tissue sections by Immunohistochemistry (IHC-P - paraformaldehyde-fixed, paraffin-embedded sections). Tissue was fixed with formaldehyde and blocked with 3% BSA for 0.5 hour at room temperature; antigen retrieval was by heat mediation with a citrate buffer (pH6). Samples were incubated with primary antibody (1/25) for 1 hour at 37°C. A undiluted biotinylated goat polyvalent antibody was used as the secondary antibody.



AP22175a staining PABPC3 in human colon tissue sections by Immunohistochemistry (IHC-P - paraformaldehyde-fixed, paraffin-embedded sections). Tissue was fixed with formaldehyde and blocked with 3% BSA for 0.5 hour at room temperature; antigen retrieval was by heat mediation with a citrate buffer (pH6). Samples were incubated with primary antibody (1/25) for 1 hour at 37°C. A undiluted biotinylated goat polyvalent antibody was used as the secondary antibody.



Overlay histogram showing HepG2 cells stained with AP22175a (green line). The cells were fixed with 2% paraformaldehyde (10 min) and then permeabilized with 90% methanol for 10 min. The cells were then incubated in 2% bovine serum albumin to block non-specific protein-protein interactions followed by the antibody (AP22175a, 1:25 dilution) for 60 min at 37°C. The secondary antibody used was Goat-Anti-Rabbit IgG, DyLight® 488 Conjugated Highly Cross-Adsorbed (OH191631) at 1/200 dilution for 40 min at 37°C. Isotype control antibody (blue line) was rabbit IgG1 (1µg/1x10<sup>6</sup> cells) used under the same conditions. Acquisition of >10,000 events was performed.

#### **PABPC3 Antibody (N-Term) - Background**

Binds the poly(A) tail of mRNA. May be involved in cytoplasmic regulatory processes of mRNA metabolism. Binds poly(A) with a slightly lower affinity as compared to PABPC1.

#### **PABPC3 Antibody (N-Term) - References**

Feral C., et al. Nucleic Acids Res. 29:1872-1883(2001).  
Wiemann S., et al. Genome Res. 11:422-435(2001).