

**E2 tag Antibody**  
**Purified Rabbit Polyclonal Antibody (Pab)**  
**Catalog # AP22158a****Specification**

---

**E2 tag Antibody - Product Information**

Application	WB,E
Primary Accession	<a href="#">NA</a>
Host	Rabbit
Clonality	polyclonal
Isotype	Rabbit IgG

**E2 tag Antibody - Additional Information****Target/Specificity**

This E2 tag antibody is generated from a rabbit immunized with a KLH conjugated synthetic peptide of E2 tag.

**Dilution**

WB~~1:1000

**Format**

Purified polyclonal antibody supplied in PBS with 0.09% (W/V) sodium azide. This antibody is purified through a protein A column, followed by peptide affinity purification.

**Storage**

Maintain refrigerated at 2-8°C for up to 2 weeks. For long term storage store at -20°C in small aliquots to prevent freeze-thaw cycles.

**Precautions**

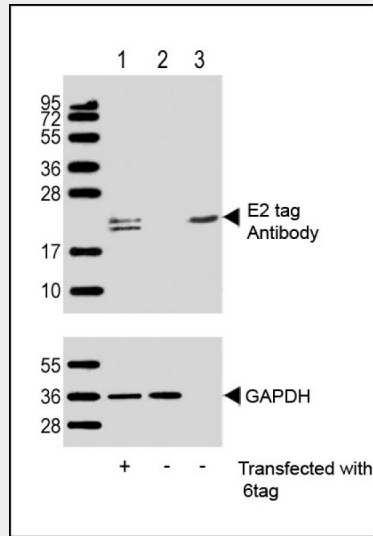
E2 tag Antibody is for research use only and not for use in diagnostic or therapeutic procedures.

**E2 tag Antibody - Protein Information****E2 tag Antibody - Protocols**

Provided below are standard protocols that you may find useful for product applications.

- [Western Blot](#)
- [Blocking Peptides](#)
- [Dot Blot](#)
- [Immunohistochemistry](#)
- [Immunofluorescence](#)
- [Immunoprecipitation](#)
- [Flow Cytometry](#)
- [Cell Culture](#)

## E2 tag Antibody - Images



All lanes : Anti-E2 tag Antibody at 1:1000 dilution (upper) or GAPDH (lower) Lane 1: 293T/17 transfected with 6tag lysate (1ug) Lane 2: Non-transfected 293T/17 lysate (1ug) Lane 3: 6tag recombinant protein lysate (0. 5ug) Secondary Goat Anti-Rabbit IgG, (H+L), Peroxidase conjugated at 1/10000 dilution. Predicted band size : 21 kDa Blocking/Dilution buffer: 5% NFDN/TBST.