

PLCB3 Antibody (N-Term)
Purified Rabbit Polyclonal Antibody (Pab)
Catalog # AP22155a

Specification

PLCB3 Antibody (N-Term) - Product Information

Application	WB,E
Primary Accession	Q01970
Other Accession	P51432 , Q99JE6
Reactivity	Mouse, Rat
Predicted	Mouse, Rat
Host	Rabbit
Clonality	polyclonal
Isotype	Rabbit IgG
Calculated MW	138799

PLCB3 Antibody (N-Term) - Additional Information

Gene ID 5331

Other Names

1-phosphatidylinositol 4, 5-bisphosphate phosphodiesterase beta-3, 3.1.4.11, Phosphoinositide phospholipase C-beta-3, Phospholipase C-beta-3, PLC-beta-3, PLCB3

Target/Specificity

This PLCB3 antibody is generated from a rabbit immunized with a KLH conjugated synthetic peptide between 16-50 amino acids from human PLCB3.

Dilution

WB~~1:2000

Format

Purified polyclonal antibody supplied in PBS with 0.09% (W/V) sodium azide. This antibody is purified through a protein A column, followed by peptide affinity purification.

Storage

Maintain refrigerated at 2-8°C for up to 2 weeks. For long term storage store at -20°C in small aliquots to prevent freeze-thaw cycles.

Precautions

PLCB3 Antibody (N-Term) is for research use only and not for use in diagnostic or therapeutic procedures.

PLCB3 Antibody (N-Term) - Protein Information

Name PLCB3 {ECO:0000312|EMBL:AAA77683.1}

Function The production of the second messenger molecules diacylglycerol (DAG) and inositol

1,4,5-trisphosphate (IP3) is mediated by activated phosphatidylinositol-specific phospholipase C enzymes (PubMed:[29122926](#), PubMed:[9188725](#)). In neutrophils, participates in a phospholipase C-activating N-formyl peptide-activated GPCR (G protein- coupled receptor) signaling pathway by promoting RASGRP4 activation by DAG, to promote neutrophil functional responses (By similarity).

Cellular Location

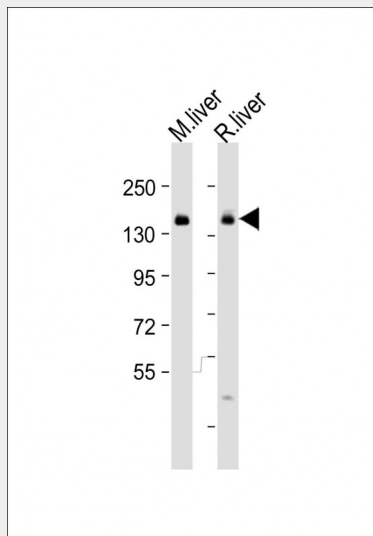
Cytoplasm. Membrane {ECO:0000250|UniProtKB:Q99JE6}. Nucleus {ECO:0000250|UniProtKB:P51432} Note=And particulate fractions. {ECO:0000250|UniProtKB:Q99JE6}

PLCB3 Antibody (N-Term) - Protocols

Provided below are standard protocols that you may find useful for product applications.

- [Western Blot](#)
- [Blocking Peptides](#)
- [Dot Blot](#)
- [Immunohistochemistry](#)
- [Immunofluorescence](#)
- [Immunoprecipitation](#)
- [Flow Cytometry](#)
- [Cell Culture](#)

PLCB3 Antibody (N-Term) - Images



All lanes : Anti-PLCB3 Antibody (N-Term) at 1:2000 dilution Lane 1: mouse liver lysate Lane 2: rat liver lysate Lysates/proteins at 20 µg per lane. Secondary Goat Anti-Rabbit IgG, (H+L), Peroxidase conjugated at 1/10000 dilution. Predicted band size : 139 kDa Blocking/Dilution buffer: 5% NFDM/TBST.

PLCB3 Antibody (N-Term) - Background

The production of the second messenger molecules diacylglycerol (DAG) and inositol 1,4,5-trisphosphate (IP3) is mediated by activated phosphatidylinositol-specific phospholipase C enzymes.

PLCB3 Antibody (N-Term) - References

Mazuruk K., et al. *Biochem. Biophys. Res. Commun.* 212:190-195(1995).
Lagercrantz J., et al. *Genomics* 26:467-472(1995).
Taylor T.D., et al. *Nature* 440:497-500(2006).
Mural R.J., et al. Submitted (JUL-2005) to the EMBL/GenBank/DDBJ databases.
Carozzi A.J., et al. *Eur. J. Biochem.* 210:521-529(1992).