

DBN1 Antibody (Center)
Purified Rabbit Polyclonal Antibody (Pab)
Catalog # AP22154c

Specification

DBN1 Antibody (Center) - Product Information

Application	WB,E
Primary Accession	Q16643
Other Accession	Q9OXS6 , Q07266
Reactivity	Human, Mouse
Predicted	Rat
Host	Rabbit
Clonality	polyclonal
Isotype	Rabbit IgG
Calculated MW	71429

DBN1 Antibody (Center) - Additional Information

Gene ID 1627

Other Names

Drebrin, Developmentally-regulated brain protein, DBN1, D0S117E

Target/Specificity

This DBN1 antibody is generated from a rabbit immunized with a KLH conjugated synthetic peptide between 194-228 amino acids from the Central region of human DBN1.

Dilution

WB~~1:2000

Format

Purified polyclonal antibody supplied in PBS with 0.09% (W/V) sodium azide. This antibody is purified through a protein A column, followed by peptide affinity purification.

Storage

Maintain refrigerated at 2-8°C for up to 2 weeks. For long term storage store at -20°C in small aliquots to prevent freeze-thaw cycles.

Precautions

DBN1 Antibody (Center) is for research use only and not for use in diagnostic or therapeutic procedures.

DBN1 Antibody (Center) - Protein Information

Name DBN1

Synonyms D0S117E

Function Actin cytoskeleton-organizing protein that plays a role in the formation of cell projections (PubMed:[20215400](#)). Required for actin polymerization at immunological synapses (IS) and for the recruitment of the chemokine receptor CXCR4 to IS (PubMed:[20215400](#)). Plays a role in dendritic spine morphogenesis and organization, including the localization of the dopamine receptor DRD1 to the dendritic spines (By similarity). Involved in memory-related synaptic plasticity in the hippocampus (By similarity).

Cellular Location

Cytoplasm. Cell projection, dendrite. Cytoplasm, cell cortex. Cell junction. Cell projection, growth cone {ECO:0000250|UniProtKB:Q9QXS6}. Note=In the absence of antigen, evenly distributed throughout subcortical regions of the T-cell membrane and cytoplasm (PubMed:20215400). In the presence of antigen, distributes to the immunological synapse forming at the T-cell-APC contact area, where it localizes at the peripheral and distal supramolecular activation clusters (SMAC) (PubMed:20215400). Colocalized with RUFY3 and F-actin at the transitional domain of the axonal growth cone (By similarity) {ECO:0000250|UniProtKB:Q9QXS6, ECO:0000269|PubMed:20215400}

Tissue Location

Expressed in the brain, with expression in the molecular layer of the dentate gyrus, stratum pyramidale, and stratum radiatum of the hippocampus (at protein level) (PubMed:8838578). Also expressed in the terminal varicosities distributed along dendritic trees of pyramidal cells in CA4 and CA3 of the hippocampus (at protein level) (PubMed:8838578). Expressed in pyramidal cells in CA2, CA1 and the subiculum of the hippocampus (at protein level) (PubMed:8838578) Expressed in peripheral blood lymphocytes, including T-cells (at protein level) (PubMed:20215400). Expressed in the brain (PubMed:8216329, Ref.2). Expressed in the heart, placenta, lung, skeletal muscle, kidney, pancreas, skin fibroblasts, gingival fibroblasts and bone-derived cells (Ref.2) {ECO:0000269|PubMed:20215400, ECO:0000269|PubMed:8216329, ECO:0000269|PubMed:8838578, ECO:0000269|Ref.2}

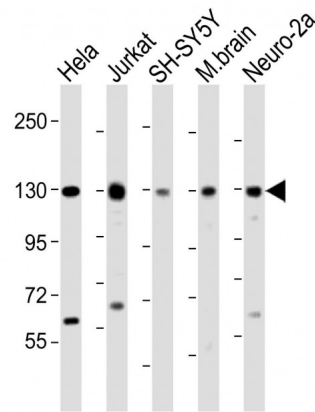
DBN1 Antibody (Center) - Protocols

Provided below are standard protocols that you may find useful for product applications.

- [Western Blot](#)
- [Blocking Peptides](#)
- [Dot Blot](#)
- [Immunohistochemistry](#)
- [Immunofluorescence](#)
- [Immunoprecipitation](#)
- [Flow Cytometry](#)
- [Cell Culture](#)

DBN1 Antibody (Center) - Images





All lanes : Anti-DBN1 Antibody (Center) at 1:2000 dilution Lane 1: HeLa whole cell lysate Lane 2: Jurkat whole cell lysate Lane 3: SH-SY5Y whole cell lysate Lane 4: mouse brain lysate Lane 5: Neuro-2a whole cell lysate Lysates/proteins at 20 µg per lane. Secondary Goat Anti-Rabbit IgG, (H+L), Peroxidase conjugated at 1/10000 dilution. Predicted band size : 71 kDa Blocking/Dilution buffer: 5% NFDm/TBST.

DBN1 Antibody (Center) - Background

Drebrins might play some role in cell migration, extension of neuronal processes and plasticity of dendrites. Required for actin polymerization at immunological synapses (IS) and for CXCR4 recruitment to IS.

DBN1 Antibody (Center) - References

- Toda M.,et al.Biochem. Biophys. Res. Commun. 196:468-472(1993).
- Fisher L.W.,et al.Neurosci. Res. Commun. 14:35-42(1994).
- Ota T.,et al.Nat. Genet. 36:40-45(2004).
- Bechtel S.,et al.BMC Genomics 8:399-399(2007).
- Schmutz J.,et al.Nature 431:268-274(2004).