

Klotho Antibody (C-term)
Purified Rabbit Polyclonal Antibody (Pab)
Catalog # AP22140b

Specification

Klotho Antibody (C-term) - Product Information

Application	WB,E
Primary Accession	O9UEF7
Other Accession	O8WP17
Reactivity	Human
Host	Rabbit
Clonality	polyclonal
Isotype	Rabbit IgG
Calculated MW	116181

Klotho Antibody (C-term) - Additional Information

Gene ID 9365

Other Names

Klotho, 3.2.1.31, Klotho peptide, KL

Target/Specificity

This Klotho antibody is generated from a rabbit immunized with a KLH conjugated synthetic peptide between 284-315 amino acids from the C-terminal region of human Klotho.

Dilution

WB~~1:2000

Format

Purified polyclonal antibody supplied in PBS with 0.09% (W/V) sodium azide. This antibody is purified through a protein A column, followed by peptide affinity purification.

Storage

Maintain refrigerated at 2-8°C for up to 2 weeks. For long term storage store at -20°C in small aliquots to prevent freeze-thaw cycles.

Precautions

Klotho Antibody (C-term) is for research use only and not for use in diagnostic or therapeutic procedures.

Klotho Antibody (C-term) - Protein Information

Name KL

Function May have weak glycosidase activity towards glucuronylated steroids. However, it lacks essential active site Glu residues at positions 239 and 872, suggesting it may be inactive as a glycosidase in vivo. May be involved in the regulation of calcium and phosphorus homeostasis by

inhibiting the synthesis of active vitamin D (By similarity). Essential factor for the specific interaction between FGF23 and FGFR1 (By similarity).

Cellular Location

[Isoform 1]: Cell membrane; Single-pass type I membrane protein. Apical cell membrane {ECO:0000250|UniProtKB:O35082}; Single-pass type I membrane protein {ECO:0000250|UniProtKB:O35082}. Note=Isoform 1 shedding leads to a soluble peptide. {ECO:0000250|UniProtKB:O35082} [Klotho peptide]: Secreted {ECO:0000250|UniProtKB:O35082}

Tissue Location

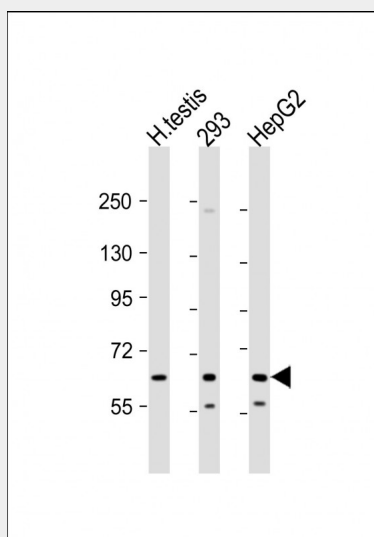
Present in cortical renal tubules (at protein level). Soluble peptide is present in serum and cerebrospinal fluid Expressed in kidney, placenta, small intestine and prostate. Down-regulated in renal cell carcinomas, hepatocellular carcinomas, and in chronic renal failure kidney.

Klotho Antibody (C-term) - Protocols

Provided below are standard protocols that you may find useful for product applications.

- [Western Blot](#)
- [Blocking Peptides](#)
- [Dot Blot](#)
- [Immunohistochemistry](#)
- [Immunofluorescence](#)
- [Immunoprecipitation](#)
- [Flow Cytometry](#)
- [Cell Culture](#)

Klotho Antibody (C-term) - Images



All lanes : Anti-Klotho Antibody (C-term) at 1:2000 dilution Lane 1: human testis lysate Lane 2: 293 whole cell lysate Lane 3: HepG2 whole cell lysate Lysates/proteins at 20 µg per lane. Secondary Goat Anti-Rabbit IgG, (H+L), Peroxidase conjugated at 1/10000 dilution. Predicted band size : 116 kDa Blocking/Dilution buffer: 5% NFDM/TBST.

Klotho Antibody (C-term) - Background

May have weak glycosidase activity towards glucuronylated steroids. However, it lacks essential

active site Glu residues at positions 239 and 872, suggesting it may be inactive as a glycosidase in vivo. May be involved in the regulation of calcium and phosphorus homeostasis by inhibiting the synthesis of active vitamin D (By similarity). Essential factor for the specific interaction between FGF23 and FGFR1 (By similarity).

Klotho Antibody (C-term) - References

- Kuro-o M.,et al.Nature 390:45-51(1997).
Matsumura Y.,et al.Biochem. Biophys. Res. Commun. 242:626-630(1998).
Dunham A.,et al.Nature 428:522-528(2004).
Kato Y.,et al.Biochem. Biophys. Res. Commun. 267:597-602(2000).
Yahata K.,et al.J. Mol. Med. 78:389-394(2000).