

PCSK1 Antibody (C-Term)
Purified Rabbit Polyclonal Antibody (Pab)
Catalog # AP22139b

Specification

PCSK1 Antibody (C-Term) - Product Information

Application	WB, FC,E
Primary Accession	P29120
Reactivity	Human, Mouse, Rat
Host	Rabbit
Clonality	polyclonal
Isotype	Rabbit IgG
Calculated MW	84152

PCSK1 Antibody (C-Term) - Additional Information

Gene ID 5122

Other Names

Neuroendocrine convertase 1, NEC 1, 3.4.21.93, Prohormone convertase 1, Proprotein convertase 1, PC1, PCSK1, NEC1

Target/Specificity

This PCSK1 antibody is generated from a rabbit immunized with a KLH conjugated synthetic peptide between 682-715 amino acids from human PCSK1.

Dilution

WB~~1:2000

FC~~1:25

Format

Purified polyclonal antibody supplied in PBS with 0.09% (W/V) sodium azide. This antibody is purified through a protein A column, followed by peptide affinity purification.

Storage

Maintain refrigerated at 2-8°C for up to 2 weeks. For long term storage store at -20°C in small aliquots to prevent freeze-thaw cycles.

Precautions

PCSK1 Antibody (C-Term) is for research use only and not for use in diagnostic or therapeutic procedures.

PCSK1 Antibody (C-Term) - Protein Information

Name PCSK1

Synonyms NEC1

Function Involved in the processing of hormone and other protein precursors at sites comprised of pairs of basic amino acid residues. Substrates include POMC, renin, enkephalin, dynorphin, somatostatin, insulin and AGRP.

Cellular Location

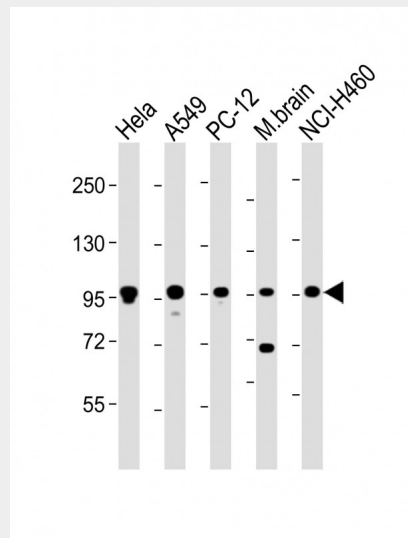
Cytoplasmic vesicle, secretory vesicle. Note=Localized in the secretion granules

PCSK1 Antibody (C-Term) - Protocols

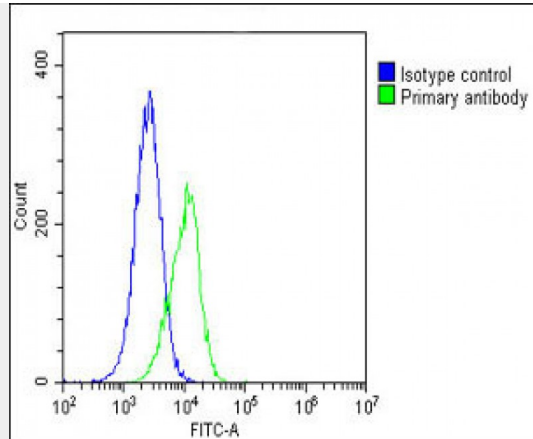
Provided below are standard protocols that you may find useful for product applications.

- [Western Blot](#)
- [Blocking Peptides](#)
- [Dot Blot](#)
- [Immunohistochemistry](#)
- [Immunofluorescence](#)
- [Immunoprecipitation](#)
- [Flow Cytometry](#)
- [Cell Culture](#)

PCSK1 Antibody (C-Term) - Images



All lanes : Anti-PCSK1 Antibody (C-Term) at 1:2000 dilution Lane 1: HeLa whole cell lysate Lane 2: A549 whole cell lysate Lane 3: PC-12 whole cell lysate Lane 4: mouse brain lysate Lane 5: NCI-H460 whole cell lysate Lysates/proteins at 20 µg per lane. Secondary Goat Anti-Rabbit IgG, (H+L), Peroxidase conjugated at 1/10000 dilution. Predicted band size : 84 kDa Blocking/Dilution buffer: 5% NFDM/TBST.



Overlay histogram showing A549 cells stained with AP22139b (green line). The cells were fixed with 2% paraformaldehyde (10 min) and then permeabilized with 90% methanol for 10 min. The cells were then incubated in 2% bovine serum albumin to block non-specific protein-protein interactions followed by the antibody (AP22139b, 1:25 dilution) for 60 min at 37°C. The secondary antibody used was Goat-Anti-Rabbit IgG, DyLight® 488 Conjugated Highly Cross-Adsorbed (OH191631) at 1/200 dilution for 40 min at 37°C. Isotype control antibody (blue line) was rabbit IgG1 (1µg/1x10⁶ cells) used under the same conditions. Acquisition of >10,000 events was performed.

PCSK1 Antibody (C-Term) - Background

Involved in the processing of hormone and other protein precursors at sites comprised of pairs of basic amino acid residues. Substrates include POMC, renin, enkephalin, dynorphin, somatostatin and insulin.

PCSK1 Antibody (C-Term) - References

- Creemers J.W.M., et al. FEBS Lett. 300:82-88(1992).
- Seidah N.G., et al. DNA Cell Biol. 11:283-289(1992).
- Ohagi S., et al. Diabetes 45:897-901(1996).
- Ota T., et al. Nat. Genet. 36:40-45(2004).
- Schmutz J., et al. Nature 431:268-274(2004).