

**SLC2A8 Antibody (Center)**  
**Purified Rabbit Polyclonal Antibody (Pab)**  
**Catalog # AP22138c**

## Specification

---

### SLC2A8 Antibody (Center) - Product Information

Application	WB, IHC-P, FC,E
Primary Accession	<a href="#">O9NY64</a>
Other Accession	<a href="#">P58354</a>
Reactivity	Human, Mouse, Rat
Predicted	Bovine
Host	Rabbit
Clonality	polyclonal
Isotype	Rabbit IgG
Calculated MW	50819

### SLC2A8 Antibody (Center) - Additional Information

**Gene ID** 29988

#### Other Names

Solute carrier family 2, facilitated glucose transporter member 8, Glucose transporter type 8, GLUT-8, Glucose transporter type X1, SLC2A8, GLUT8, GLUTX1

#### Target/Specificity

This SLC2A8 antibody is generated from a rabbit immunized with a KLH conjugated synthetic peptide between 260-292 amino acids from the Central region of human SLC2A8.

#### Dilution

WB~~1:2000  
IHC-P~~1:25  
FC~~1:25

#### Format

Purified polyclonal antibody supplied in PBS with 0.09% (W/V) sodium azide. This antibody is purified through a protein A column, followed by peptide affinity purification.

#### Storage

Maintain refrigerated at 2-8°C for up to 2 weeks. For long term storage store at -20°C in small aliquots to prevent freeze-thaw cycles.

#### Precautions

SLC2A8 Antibody (Center) is for research use only and not for use in diagnostic or therapeutic procedures.

### SLC2A8 Antibody (Center) - Protein Information

**Name** SLC2A8 ([HGNC:13812](#))

**Function** Insulin-regulated facilitative hexose transporter that mediates the transport of glucose and fructose (By similarity). Facilitates hepatic influx of dietary trehalose, which in turn inhibits glucose and fructose influx triggering a starvation signal and hepatic autophagy through activation of AMPK and ULK1 (PubMed:[27922102](#)). Also able to mediate the transport of dehydroascorbate.

#### Cellular Location

Cell membrane {ECO:0000250|UniProtKB:Q9JJZ1}; Multi-pass membrane protein. Cytoplasmic vesicle membrane {ECO:0000250|UniProtKB:Q9JJZ1}; Multi-pass membrane protein. Note=Principally intracellular. May move between intracellular vesicles and the plasma membrane. The dileucine internalization motif is critical for intracellular sequestration {ECO:0000250|UniProtKB:Q9JJZ1}

#### Tissue Location

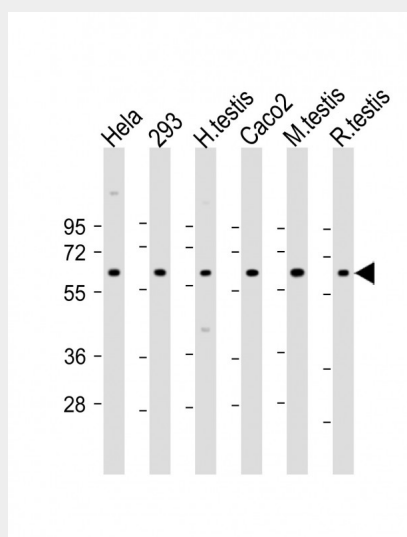
Highly expressed in testis, but not in testicular carcinoma. Lower amounts present in most other tissues

### SLC2A8 Antibody (Center) - Protocols

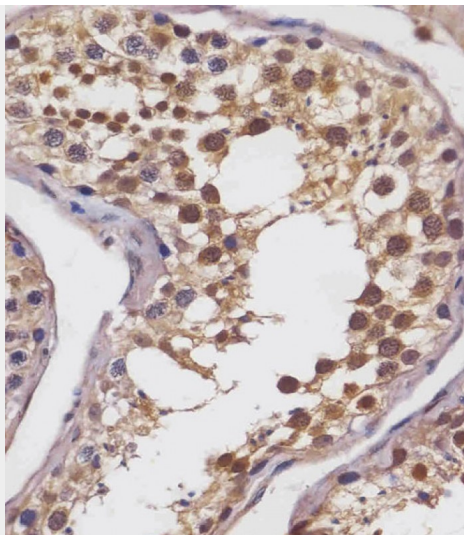
Provided below are standard protocols that you may find useful for product applications.

- [Western Blot](#)
- [Blocking Peptides](#)
- [Dot Blot](#)
- [Immunohistochemistry](#)
- [Immunofluorescence](#)
- [Immunoprecipitation](#)
- [Flow Cytometry](#)
- [Cell Culture](#)

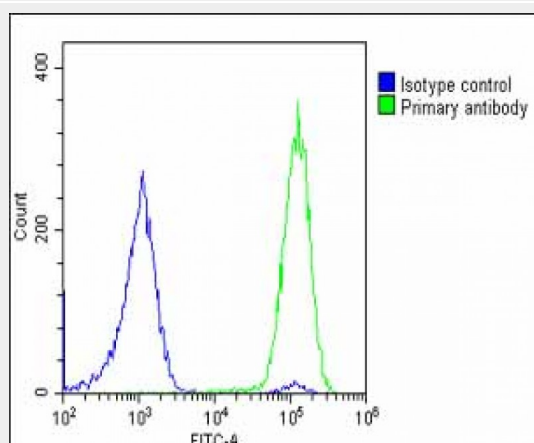
### SLC2A8 Antibody (Center) - Images



All lanes : Anti-SLC2A8 Antibody (Center) at 1:2000 dilution Lane 1: HeLa whole cell lysate Lane 2: 293 whole cell lysate Lane 3: human testis lysate Lane 4: Caco2 whole cell lysate Lane 5: mouse testis lysate Lane 6: rat testis lysate Lysates/proteins at 20 µg per lane. Secondary Goat Anti-Rabbit IgG, (H+L), Peroxidase conjugated at 1/10000 dilution. Predicted band size : 51 kDa Blocking/Dilution buffer: 5% NFDM/TBST.



AP22138c staining SLC2A8 in human testis tissue sections by Immunohistochemistry (IHC-P - paraformaldehyde-fixed, paraffin-embedded sections). Tissue was fixed with formaldehyde and blocked with 3% BSA for 0.5 hour at room temperature; antigen retrieval was by heat mediation with a citrate buffer (pH6). Samples were incubated with primary antibody (1/25) for 1 hour at 37°C. An undiluted biotinylated goat polyvalent antibody was used as the secondary antibody.



Overlay histogram showing U-2 OS cells stained with AP22138c (green line). The cells were fixed with 2% paraformaldehyde (10 min) and then permeabilized with 90% methanol for 10 min. The cells were then incubated in 2% bovine serum albumin to block non-specific protein-protein interactions followed by the antibody (AP22138c, 1:25 dilution) for 60 min at 37°C. The secondary antibody used was Goat-Anti-Rabbit IgG, DyLight® 488 Conjugated Highly Cross-Adsorbed (OE188374) at 1/200 dilution for 40 min at 37°C. Isotype control antibody (blue line) was rabbit IgG1 (1 µg/1x10<sup>6</sup> cells) used under the same conditions. Acquisition of >10,000 events was performed.

### SLC2A8 Antibody (Center) - Background

Insulin-regulated facilitative glucose transporter. Binds cytochalasin B in a glucose-inhibitable manner. Seems to be a dual-specific sugar transporter as it is inhibitable by fructose (By similarity).

### SLC2A8 Antibody (Center) - References

Doege H., et al. J. Biol. Chem. 275:16275-16280 (2000).  
Ibberson M.R., et al. J. Biol. Chem. 275:4607-4612 (2000).  
Humphray S.J., et al. Nature 429:369-374 (2004).

Mural R.J.,et al.Submitted (JUL-2005) to the EMBL/GenBank/DDBJ databases.  
Burkard T.R.,et al.BMC Syst. Biol. 5:17-17(2011).