

NUPL1 Antibody (Center)
Purified Rabbit Polyclonal Antibody (Pab)
Catalog # AP22133c

Specification

NUPL1 Antibody (Center) - Product Information

| | |
|-------------------|---|
| Application | WB,E |
| Primary Accession | O9BVL2 |
| Other Accession | O8R332 , P70581 |
| Reactivity | Human |
| Predicted | Mouse, Rat |
| Host | Rabbit |
| Clonality | polyclonal |
| Isotype | Rabbit IgG |
| Calculated MW | 60897 |

NUPL1 Antibody (Center) - Additional Information

Gene ID 9818

Other Names

Nucleoporin p58/p45, Nucleoporin-like protein 1, NUPL1, KIAA0410

Target/Specificity

This NUPL1 antibody is generated from a rabbit immunized with a KLH conjugated synthetic peptide between 206-240 amino acids from the Central region of human NUPL1.

Dilution

WB~~1:2000

Format

Purified polyclonal antibody supplied in PBS with 0.09% (W/V) sodium azide. This antibody is purified through a protein A column, followed by peptide affinity purification.

Storage

Maintain refrigerated at 2-8°C for up to 2 weeks. For long term storage store at -20°C in small aliquots to prevent freeze-thaw cycles.

Precautions

NUPL1 Antibody (Center) is for research use only and not for use in diagnostic or therapeutic procedures.

NUPL1 Antibody (Center) - Protein Information

Name NUP58 ([HGNC:20261](#))

Synonyms KIAA0410, NUPL1

Function Component of the nuclear pore complex, a complex required for the trafficking across the nuclear membrane.

Cellular Location

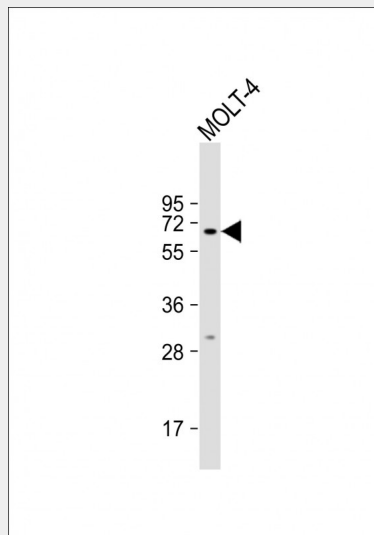
Nucleus, nuclear pore complex {ECO:0000250|UniProtKB:P70581}. Nucleus membrane {ECO:0000250|UniProtKB:P70581}; Peripheral membrane protein {ECO:0000250|UniProtKB:P70581}; Cytoplasmic side {ECO:0000250|UniProtKB:P70581}. Nucleus membrane {ECO:0000250|UniProtKB:P70581}; Peripheral membrane protein {ECO:0000250|UniProtKB:P70581}; Nucleoplasmic side {ECO:0000250|UniProtKB:P70581}. Note=Biased towards cytoplasmic side Central region of the nuclear pore complex, within the transporter {ECO:0000250|UniProtKB:P70581}

NUPL1 Antibody (Center) - Protocols

Provided below are standard protocols that you may find useful for product applications.

- [Western Blot](#)
- [Blocking Peptides](#)
- [Dot Blot](#)
- [Immunohistochemistry](#)
- [Immunofluorescence](#)
- [Immunoprecipitation](#)
- [Flow Cytometry](#)
- [Cell Culture](#)

NUPL1 Antibody (Center) - Images



Anti-NUPL1 Antibody (Center) at 1:2000 dilution + MOLT-4 whole cell lysate Lysates/proteins at 20 µg per lane. Secondary Goat Anti-Rabbit IgG, (H+L), Peroxidase conjugated at 1/10000 dilution. Predicted band size : 61 kDa Blocking/Dilution buffer: 5% NFDM/TBST.

NUPL1 Antibody (Center) - Background

Component of the nuclear pore complex, a complex required for the trafficking across the nuclear membrane.

NUPL1 Antibody (Center) - References

Ishikawa K.,et al.DNA Res. 4:307-313(1997).
Ota T.,et al.Nat. Genet. 36:40-45(2004).
Dunham A.,et al.Nature 428:522-528(2004).
Olsen J.V.,et al.Sci. Signal. 3:RA3-RA3(2010).
Burkard T.R.,et al.BMC Syst. Biol. 5:17-17(2011).