

alpha Tubulin Antibody
Purified Rabbit Polyclonal Antibody (Pab)
Catalog # AP22120a**Specification**

alpha Tubulin Antibody - Product Information

Application	IF, WB, FC,E
Primary Accession	P68363
Other Accession	P68362 , Q71U36 , P68369 , A5A6J1 , P02550 , P68370 , P81947 , P68361 , Q4R538 , P68360 , P05213 , Q5R1W4 , Q2XVP4 , Q6P9V9 , Q8T6A5 , P02552 , P18258 , P41383 , Q13748 , Q32KN8 , P91910 , Q94572 , P05214 , Q68FR8 , P18288 , P50719 , P02553 , P36220 , P0DPH7 , P0DPH8
Reactivity	Human
Predicted	Chicken, Hamster, Mouse, Pig, Rat, Bovine, Monkey, C.Elegans
Host	Rabbit
Clonality	polyclonal
Isotype	Rabbit IgG
Calculated MW	50152

alpha Tubulin Antibody - Additional Information**Gene ID** 10376**Other Names**

Tubulin alpha-1B chain, Alpha-tubulin ubiquitous, Tubulin K-alpha-1, Tubulin alpha-ubiquitous chain, TUBA1B

Target/Specificity

This alpha Tubulin antibody is generated from a rabbit immunized with a KLH conjugated synthetic peptide between 408-439 amino acids from human alpha Tubulin.

Dilution

IF~~1:25

WB~~1:2000

FC~~1:25

Format

Purified polyclonal antibody supplied in PBS with 0.09% (W/V) sodium azide. This antibody is purified through a protein A column, followed by peptide affinity purification.

Storage

Maintain refrigerated at 2-8°C for up to 2 weeks. For long term storage store at -20°C in small aliquots to prevent freeze-thaw cycles.

Precautions

alpha Tubulin Antibody is for research use only and not for use in diagnostic or therapeutic procedures.

alpha Tubulin Antibody - Protein Information

Name TUBA1B

Function Tubulin is the major constituent of microtubules, a cylinder consisting of laterally associated linear protofilaments composed of alpha- and beta-tubulin heterodimers (PubMed:[34996871](#)). Microtubules grow by the addition of GTP-tubulin dimers to the microtubule end, where a stabilizing cap forms (PubMed:[34996871](#)). Below the cap, tubulin dimers are in GDP-bound state, owing to GTPase activity of alpha- tubulin (PubMed:[34996871](#)).

Cellular Location

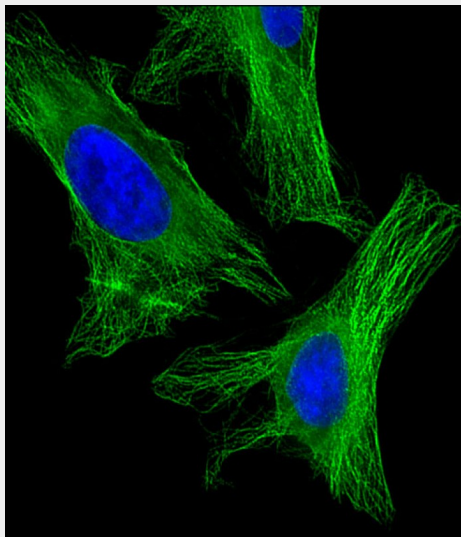
Cytoplasm, cytoskeleton

alpha Tubulin Antibody - Protocols

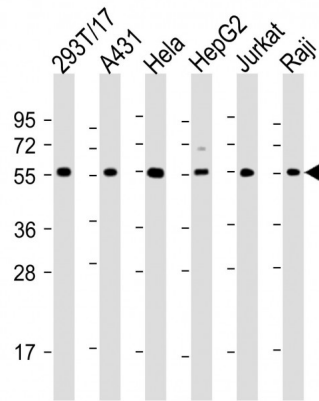
Provided below are standard protocols that you may find useful for product applications.

- [Western Blot](#)
- [Blocking Peptides](#)
- [Dot Blot](#)
- [Immunohistochemistry](#)
- [Immunofluorescence](#)
- [Immunoprecipitation](#)
- [Flow Cytometry](#)
- [Cell Culture](#)

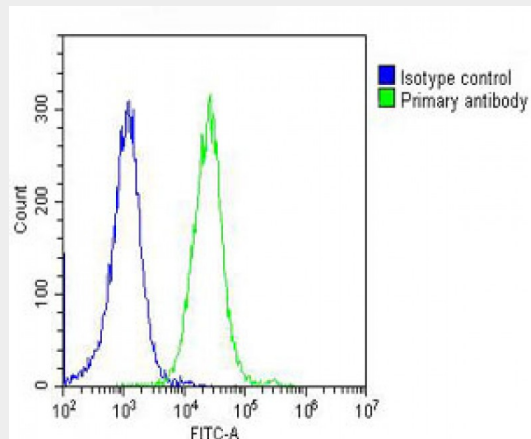
alpha Tubulin Antibody - Images



Immunofluorescent analysis of 4% paraformaldehyde-fixed, 0.1% Triton X-100 permeabilized HeLa (human cervical epithelial adenocarcinoma cell line) cells labeling alpha Tubulin with AP22120a at 1/25 dilution, followed by Dylight® 488-conjugated goat anti-rabbit IgG (NK179883) secondary antibody at 1/200 dilution (green). Immunofluorescence image showing cytoplasm staining on HeLa cell line. The nuclear counter stain is DAPI (blue).



All lanes : Anti-alpha Tubulin Antibody at 1:2000 dilution Lane 1: 293T/17 whole cell lysate Lane 2: A431 whole cell lysate Lane 3: HeLa whole cell lysate Lane 4: HepG2 whole cell lysate Lane 5: Jurkat whole cell lysate Lane 6: Raji whole cell lysate Lysates/proteins at 20 µg per lane. Secondary Goat Anti-Rabbit IgG, (H+L), Peroxidase conjugated at 1/10000 dilution. Predicted band size : 50 kDa Blocking/Dilution buffer: 5% NFDM/TBST.



Overlay histogram showing HeLa cells stained with AP22120a (green line). The cells were fixed with 2% paraformaldehyde (10 min) and then permeabilized with 90% methanol for 10 min. The cells were then incubated in 2% bovine serum albumin to block non-specific protein-protein interactions followed by the antibody (AP22120a, 1:25 dilution) for 60 min at 37°C. The secondary antibody used was Goat-Anti-Rabbit IgG, DyLight® 488 Conjugated Highly Cross-Adsorbed(OH191631) at 1/200 dilution for 40 min at 37°C. Isotype control antibody (blue line) was rabbit IgG (1µg/1x10⁶ cells) used under the same conditions. Acquisition of >10, 000 events was performed.

alpha Tubulin Antibody - Background

Tubulin is the major constituent of microtubules. It binds two moles of GTP, one at an exchangeable site on the beta chain and one at a non-exchangeable site on the alpha chain.

alpha Tubulin Antibody - References

- Cowan N.J.,et al.Mol. Cell. Biol. 3:1738-1745(1983).
- de Hostos E.L.,et al.Submitted (JUL-1998) to the EMBL/GenBank/DDBJ databases.
- Li Q.,et al.Submitted (FEB-2006) to the EMBL/GenBank/DDBJ databases.

Lubec G.,et al.Submitted (DEC-2008) to UniProtKB.
Bienvenut W.V.,et al.Submitted (MAR-2009) to UniProtKB.